

For Research Use Only

MDM1 Recombinant antibody, PBS Only

Catalog Number: 83141-5-PBS



Basic Information

Catalog Number: 83141-5-PBS	GenBank Accession Number: BC028355	Purification Method: Protein A purification
Size: 100ug , Concentration: 1 mg/ml by Nanodrop;	GeneID (NCBI): 56890	CloneNo.: 230425E2
Source: Rabbit	UNIPROT ID: Q8TC05	
Isotype: IgG	Full Name: Mdm1 nuclear protein homolog (mouse)	
Immunogen Catalog Number: AG10541	Calculated MW: 81 kDa	

Applications

Tested Applications:
FC (Intra), Indirect ELISA

Species Specificity:
human

Background Information

Mdm1 is highly conserved in mammals as four sorting nexins (Snx): Snx13, 14, 19, and 25. Snx14 alleles are implicated in an autosomal-recessive neurological disease characterized by cellular vacuolization and granular plaque accumulation in late endosomes or autophagosomes. (PMID: 26283797)

Storage

Storage:
Store at -80°C.

Storage Buffer:
PBS Only

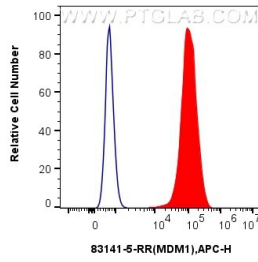
For technical support and original validation data for this product please contact:

T: 1 (888) 4PTGLAB (1-888-478-4522) (toll free in USA), or 1(312) 455-8498 (outside USA)

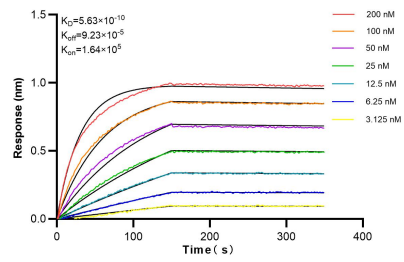
E: proteintech@ptglab.com
W: ptglab.com

This product is exclusively available under Proteintech Group brand and is not available to purchase from any other manufacturer.

Selected Validation Data



1x10⁶ A431 cells were intracellularly stained with 0.25 ug Mdm1 Recombinant Antibody (83141-5-RR, Clone:230425E2) and APC-Conjugated AffiniPure Goat Anti-Rabbit IgG(H+L)(red), or 0.25 ug Isotype Control (blue). Cells were fixed with 4% PFA and permeabilized with Flow Cytometry Perm Buffer (PF00011-C). This data was developed using the same antibody clone with 83141-5-PBS in a different storage buffer formulation.



Biolayer interferometry (BLI) kinetic assays of 83141-5-RR against Human MDM1 were performed. The affinity constant is 0.563 nM.