

For Research Use Only

MDM1 Recombinant antibody

Catalog Number: 83141-2-RR **Featured Product**



Basic Information

Catalog Number: 83141-2-RR	GenBank Accession Number: BC028355	Purification Method: Protein A purification
Size: 100ul , Concentration: 1000 ug/ml by Nanodrop;	GeneID (NCBI): 56890	CloneNo.: 230425E10
Source: Rabbit	UNIPROT ID: Q8TC05	Recommended Dilutions: WB 1:5000-1:50000 IHC 1:200-1:800
Isotype: IgG	Full Name: Mdm1 nuclear protein homolog (mouse)	
Immunogen Catalog Number: AG10541	Calculated MW: 81 kDa	
	Observed MW: 102 kDa	

Applications

Tested Applications:

WB, IHC, ELISA

Species Specificity:

human, mouse

Note-IHC: suggested antigen retrieval with TE buffer pH 9.0; (*) Alternatively, antigen retrieval may be performed with citrate buffer pH 6.0

Positive Controls:

WB : HEK-293 cells, Raji cells, PC-3 cells, mouse testis tissue

IHC : mouse testis tissue,

Background Information

Mdm1 was upregulated during ciliogenesis in multiciliated tracheal epithelial cells and localized to centrioles and cilia when transfected into NIH/3T3 cells. Mdm1 is a microtubule-binding protein that inhibits centrosome duplication when overexpressed. Proteomic analysis revealed that Mdm1 was also detected in the mouse photoreceptor sensory cilium complex and the outer segment (OS) of photoreceptor cells in the retina, suggesting that Mdm1 might be involved in the regulation of the functions and structure of the centrosome, as well as cilia. (PMID: 36171205)

Storage

Storage:

Store at -20°C. Stable for one year after shipment.

Storage Buffer:

PBS with 0.02% sodium azide and 50% glycerol pH 7.3.

Aliquoting is unnecessary for -20°C storage

*** 20ul sizes contain 0.1% BSA

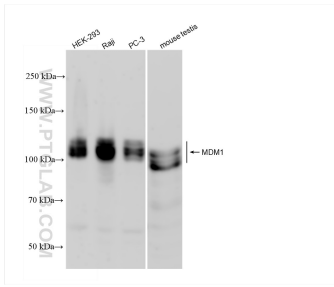
For technical support and original validation data for this product please contact:

T: 1 (888) 4PTGLAB (1-888-478-4522) (toll free in USA), or 1(312) 455-8498 (outside USA)

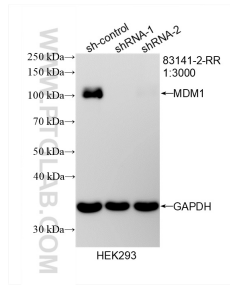
E: proteintech@ptglab.com
W: ptglab.com

This product is exclusively available under Proteintech Group brand and is not available to purchase from any other manufacturer.

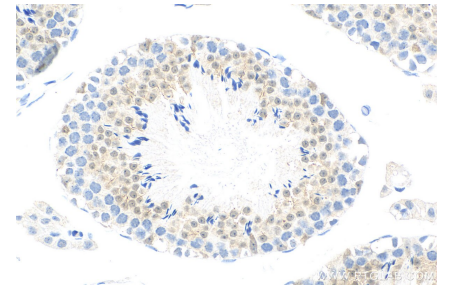
Selected Validation Data



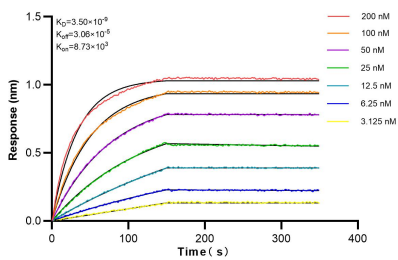
Various lysates were subjected to SDS PAGE followed by western blot with 83141-2-RR (MDM1 antibody) at dilution of 1:10000 incubated at room temperature for 1.5 hours.



WB result of MDM1 antibody (83141-2-RR; 1:3000; incubated at room temperature for 1.5 hours) with sh-Control and sh-MDM1 transfected HEK-293 cells.



Immunohistochemical analysis of paraffin-embedded mouse testis tissue slide using 83141-2-RR (MDM1 antibody) at dilution of 1:400 (under 40x lens). Heat mediated antigen retrieval with Tris-EDTA buffer (pH 9.0).



Biolayer interferometry (BLI) kinetic assays of 83141-2-RR against Human MDM1 were performed. The affinity constant is 3.50 nM.