

For Research Use Only

MDM1 Recombinant antibody, PBS Only (Detector)

Catalog Number: 83141-2-PBS

Featured Product



Basic Information

Catalog Number: 83141-2-PBS	GenBank Accession Number: BC028355	Purification Method: Protein A purification
Size: 100ug, Concentration: 1mg/ml by Nanodrop;	GeneID (NCBI): 56890	CloneNo.: 230425E10
Source: Rabbit	UNIPROT ID: Q8TC05	
Isotype: IgG	Full Name: Mdm1 nuclear protein homolog (mouse)	
Immunogen Catalog Number: AG10541	Calculated MW: 81 kDa	
	Observed MW: 102 kDa	

Applications

Tested Applications:
WB, IHC, Cytometric bead array, Sandwich ELISA, Indirect ELISA, Sample test

Species Specificity:
human, mouse

Product Information

83141-2-PBS targets MDM1 as part of a matched antibody pair:

MP00166-1: 83141-3-PBS capture and 83141-2-PBS detection (validated in Cytometric bead array, Sandwich ELISA)

MP00166-2: 83141-1-PBS capture and 83141-2-PBS detection (validated in Cytometric bead array)

Unconjugated rabbit recombinant monoclonal antibody in PBS only (BSA and azide free) storage buffer at a concentration of 1 mg/mL, ready for conjugation. Created using Proteintech's proprietary in-house recombinant technology. Recombinant production enables unrivalled batch-to-batch consistency, easy scale-up, and future security of supply.

This conjugation ready format makes antibodies ideal for use in many applications including: ELISAs, multiplex assays requiring matched pairs, mass cytometry, and multiplex imaging applications. Antibody use should be optimized by the end user for each application and assay.

Background Information

Mdm1 was upregulated during ciliogenesis in multiciliated tracheal epithelial cells and localized to centrosomes and cilia when transfected into NIH/3T3 cells. Mdm1 is a microtubule-binding protein that inhibits centrosome duplication when overexpressed. Proteomic analysis revealed that Mdm1 was also detected in the mouse photoreceptor sensory cilium complex and the outer segment (OS) of photoreceptor cells in the retina, suggesting that Mdm1 might be involved in the regulation of the functions and structure of the centrosome, as well as cilia. (PMID: 36171205)

Storage

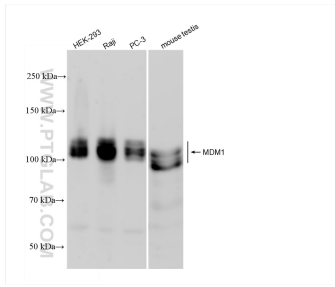
Storage:
Store at -80°C.

Storage Buffer:
PBS Only

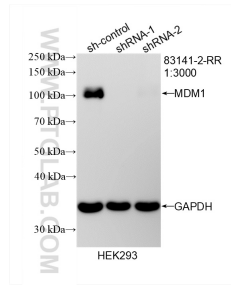
For technical support and original validation data for this product please contact:
T: 1 (888) 4PTGLAB (1-888-478-4522) (toll free in USA), or 1(312) 455-8498 (outside USA)
E: proteintech@ptglab.com
W: ptglab.com

This product is exclusively available under Proteintech Group brand and is not available to purchase from any other manufacturer.

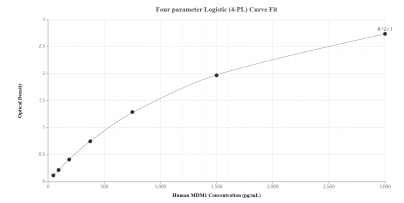
Selected Validation Data



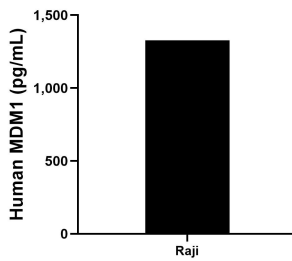
Various lysates were subjected to SDS PAGE followed by western blot with 83141-2-RR (MDM1 antibody) at dilution of 1:10000 incubated at room temperature for 1.5 hours. This data was developed using the same antibody clone with 83141-2-PBS in a different storage buffer formulation.



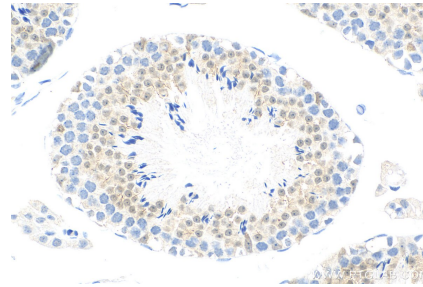
WB result of MDM1 antibody (83141-2-RR; 1:3000; incubated at room temperature for 1.5 hours) with sh-Control and sh-MDM1 transfected HEK-293 cells. This data was developed using the same antibody clone with 83141-2-PBS in a different storage buffer formulation.



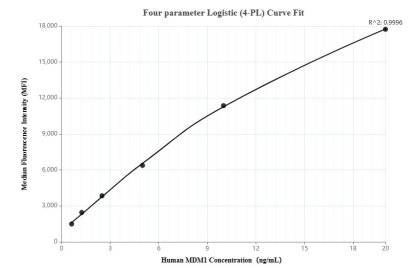
Sandwich ELISA standard curve of MP00166-1, Human MDM1 Recombinant Matched Antibody Pair - PBS only. 83141-3-PBS was coated to a plate as the capture antibody and incubated with serial dilutions of standard Ag10541. 83141-2-PBS was HRP conjugated as the detection antibody. Range: 46.8-3000 pg/mL.



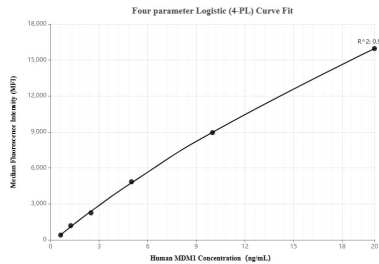
The mean MDM1 concentration was determined to be 1,326.4 pg/mL in Raji cell extract based on a 4.0 mg/mL extract load.



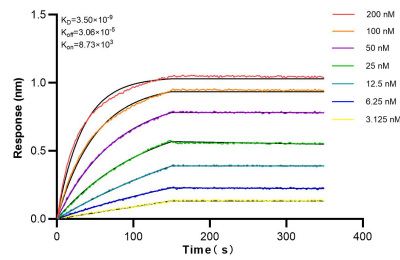
Immunohistochemical analysis of paraffin-embedded mouse testis tissue slide using 83141-2-RR (MDM1 antibody) at dilution of 1:400 (under 40x lens). Heat mediated antigen retrieval with Tris-EDTA buffer (pH 9.0). This data was developed using the same antibody clone with 83141-2-PBS in a different storage buffer formulation.



Cytometric bead array standard curve of MP00166-1, MDM1 Recombinant Matched Antibody Pair, PBS Only. Capture antibody: 83141-3-PBS. Detection antibody: 83141-2-PBS. Standard: Ag10541. Range: 0.625-20 ng/mL.



Cytometric bead array standard curve of MP00166-2, MDM1 Recombinant Matched Antibody Pair, PBS Only. Capture antibody: 83141-1-PBS. Detection antibody: 83141-2-PBS. Standard: Ag10541. Range: 0.625-20 ng/mL.



Biolayer interferometry (BLI) kinetic assays of 83141-2-RR against Human MDM1 were performed. The affinity constant is 3.50 nM.