

For Research Use Only

# CTNND2 Recombinant antibody

Catalog Number: 83138-5-RR



## Basic Information

<b>Catalog Number:</b> 83138-5-RR	<b>GenBank Accession Number:</b> NM_001332	<b>Purification Method:</b> Protein A purification
<b>Size:</b> 100ul , Concentration: 1000 ug/ml by Nanodrop;	<b>GeneID (NCBI):</b> 1501	<b>CloneNo.:</b> 230396F4
<b>Source:</b> Rabbit	<b>UNIPROT ID:</b> Q9UQB3	<b>Recommended Dilutions:</b> WB 1:1000-1:4000
<b>Isotype:</b> IgG	<b>Full Name:</b> catenin (cadherin-associated protein), delta 2 (neural plakophilin-related arm-repeat protein)	
	<b>Calculated MW:</b> 133 kDa	
	<b>Observed MW:</b> 130 kDa	

## Applications

<b>Tested Applications:</b> WB, ELISA	<b>Positive Controls:</b> WB : rat brain tissue,
<b>Species Specificity:</b> Human, rat	

## Background Information

Catenins were discovered as proteins that are linked to the cytoplasmic domain of transmembrane cadherins (PMID: 9653641). CTNND2, also called Catenin delta 2,  $\delta$ -catenin, or Neurojungin, is an armadillo repeat-containing protein in the  $\beta$ -catenin superfamily. CTNND2 interacts with classical cadherins and plays important roles in synaptic regulation.

## Storage

**Storage:**  
Store at -20°C. Stable for one year after shipment.  
**Storage Buffer:**  
PBS with 0.02% sodium azide and 50% glycerol pH 7.3.  
Aliquoting is unnecessary for -20°C storage

\*\*\* 20ul sizes contain 0.1% BSA

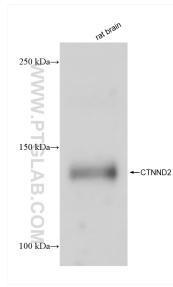
For technical support and original validation data for this product please contact:

T: 1 (888) 4PTGLAB (1-888-478-4522) (toll free in USA), or 1(312) 455-8498 (outside USA)

E: [proteintech@ptglab.com](mailto:proteintech@ptglab.com)  
W: [ptglab.com](http://ptglab.com)

This product is exclusively available under Proteintech Group brand and is not available to purchase from any other manufacturer.

## Selected Validation Data



rat brain tissue were subjected to SDS PAGE followed by western blot with 83138-5-RR (CTNND2 antibody) at dilution of 1:2000 incubated at room temperature for 1.5 hours.