

For Research Use Only

# TLR3 Recombinant antibody, PBS Only

Catalog Number: 83136-3-PBS



## Basic Information

Catalog Number:

83136-3-PBS

Size:

100ug, Concentration: 1mg/ml by Nanodrop;

Source:

Rabbit

Isotype:

IgG

Immunogen Catalog Number:

AG34044

GenBank Accession Number:

BC094737

GeneID (NCBI):

7098

UNIPROT ID:

O15455

Full Name:

toll-like receptor 3

Calculated MW:

904 aa, 104 kDa

Observed MW:

120 kDa, 68 kDa

Purification Method:

Protein A purification

CloneNo.:

230445G4

## Applications

Tested Applications:

WB, Indirect ELISA

Species Specificity:

human

## Background Information

TLR3 belongs to the Toll-like receptor family which is important in the innate immune response to pathogens. TLRs are highly conserved from *Drosophila* to humans and share structural and functional similarities. TLR3 is a nucleotide-sensing TLR that is activated by double-stranded RNA. Upon recognition of dsRNA, TLR3 transmits signals via the adaptor protein TICAM-1/TRIF, leading to the induction of type I IFN, cytokine/chemokine production, and dendritic cell (DC) maturation (PMID: 18262679).

## Storage

Storage:

Store at -80°C.

Storage Buffer:

PBS Only

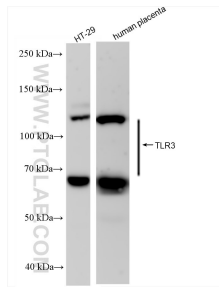
For technical support and original validation data for this product please contact:

T: 1 (888) 4PTGLAB (1-888-478-4522) (toll free in USA), or 1(312) 455-8498 (outside USA)

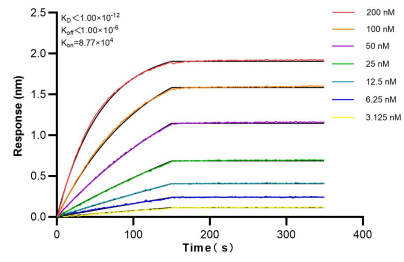
E: [proteintech@ptglab.com](mailto:proteintech@ptglab.com)  
W: [ptglab.com](http://ptglab.com)

This product is exclusively available under Proteintech Group brand and is not available to purchase from any other manufacturer.

## Selected Validation Data



HT-29 cells were subjected to SDS PAGE followed by western blot with 83136-3-RR (TLR3 antibody) at dilution of 1:7000 incubated at room temperature for 1.5 hours. This data was developed using the same antibody clone with 83136-3-PBS in a different storage buffer formulation.



Biolayer interferometry (BLI) kinetic assays of 83136-3-RR against Human TLR3 were performed. The affinity constant is below 1 pM.