

For Research Use Only

NEDD4 Recombinant antibody

Catalog Number:83112-4-RR



Basic Information

Catalog Number: 83112-4-RR	GenBank Accession Number: BC152452	Purification Method: Protein A purification
Size: 100ul , Concentration: 1000 ug/ml by Nanodrop;	GeneID (NCBI): 4734	CloneNo.: 230478D8
Source: Rabbit	UNIPROT ID: P46934	Recommended Dilutions: WB 1:5000-1:50000 IF/ICC 1:125-1:500
Isotype: IgG	Full Name: neural precursor cell expressed, developmentally down-regulated 4	
Immunogen Catalog Number: AG16291	Calculated MW: 1319 aa, 149 kDa	
	Observed MW: 115 kDa	

Applications

Tested Applications: WB, IF/ICC, FC (Intra), ELISA	Positive Controls: WB : C6 cells, A549 cells, Jurkat cells, NIH/3T3 cells IF/ICC : U2OS cells,
Species Specificity: human, mouse, rat	

Background Information

NEDD4 and similar proteins discovered subsequently became a family of HECT ligases, comprising 9 human proteins including NEDD4, NEDD4-2 (NEDD4L), ITCH, SMURF1, SMURF2, WWP1, WWP2, NEDL1 and NEDL2. NEDD4 is a highly evolutionarily conserved protein from yeast to man, and was initially cloned as a highly expressed gene in the early embryonic brain. NEDD4 is frequently overexpressed in many different types of cancer, and decreased levels of NEDD4 can also be associated with cancer. It can be a potential therapeutic target for the treatment of human cancer.(PMID: 25527121). The human NEDD4 gene is located on chromosome 15q21.3 and comprises 30 exons (HGNC:7727) shown to encode a ~120 kDa protein. Otherwise there is a 75 kDa isoform in addition to full length NEDD4 (PMID: 24907641).

Storage

Storage:
Store at -20°C. Stable for one year after shipment.
Storage Buffer:
PBS with 0.02% sodium azide and 50% glycerol pH 7.3.
Aliquoting is unnecessary for -20°C storage

*** 20ul sizes contain 0.1% BSA

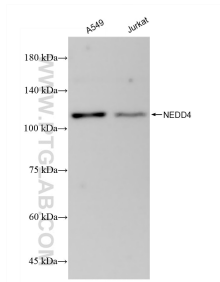
For technical support and original validation data for this product please contact:

T: 1 (888) 4PTGLAB (1-888-478-4522) (toll free in USA), or 1(312) 455-8498 (outside USA)

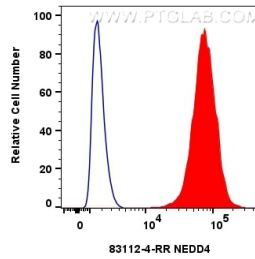
E: proteintech@ptglab.com
W: ptglab.com

This product is exclusively available under Proteintech Group brand and is not available to purchase from any other manufacturer.

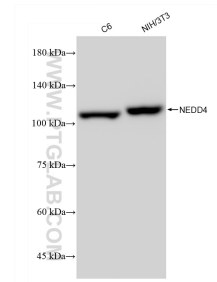
Selected Validation Data



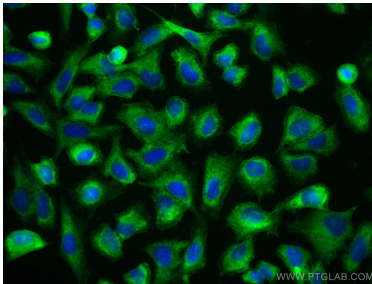
Various lysates were subjected to SDS PAGE followed by western blot with 83112-4-RR (NEDD4 antibody) at dilution of 1:10000 incubated at room temperature for 1.5 hours.



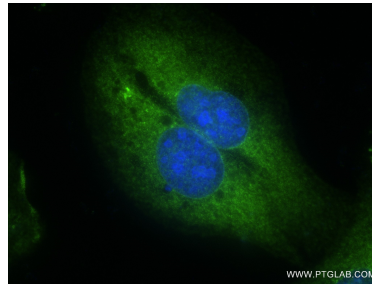
1×10^6 U2OS cells were intracellularly stained with 0.25 ug NEDD4 Recombinant antibody (83112-4-RR, Clone:230478D8) and CoraLite® 488-Conjugated Goat Anti-Rabbit IgG(H+L) (SA00013-2) (red). Cells were fixed with 4% PFA and permeabilized with Flow Cytometry Perm Buffer (PF00011-C).



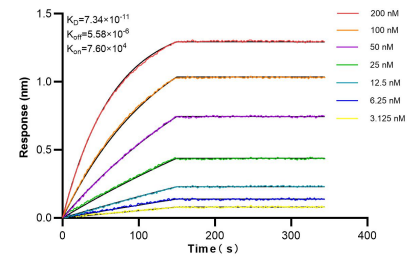
Various lysates were subjected to SDS PAGE followed by western blot with 83112-4-RR (NEDD4 antibody) at dilution of 1:10000 incubated at room temperature for 1.5 hours.



Immunofluorescent analysis of (-20°C Ethanol) fixed U2OS cells using NEDD4 antibody (83112-4-RR, Clone: 230478D8) at dilution of 1:200 and Multi-rAb CoraLite ® Plus 488-Goat Anti-Rabbit Recombinant Secondary Antibody (H+L) (RGAR002).



Immunofluorescent analysis of (-20°C Ethanol) fixed U2OS cells using NEDD4 antibody (83112-4-RR, Clone: 230478D8) at dilution of 1:250 and CoraLite® 488-Conjugated AffiniPure Goat Anti-Rabbit IgG(H+L) (SA00013-2).



Biolayer interferometry (BLI) kinetic assays of 83112-4-RR against Human NEDD4 were performed. The affinity constant is 73.4 pM.