

For Research Use Only

NEDD4 Recombinant antibody, PBS Only (Detector)

Catalog Number: 83112-4-PBS



Basic Information

Catalog Number: 83112-4-PBS	GenBank Accession Number: BC152452	Purification Method: Protein A purification
Size: 100ug, Concentration: 1mg/ml by Nanodrop;	GeneID (NCBI): 4734	CloneNo.: 230478D8
Source: Rabbit	UNIPROT ID: P46934	
Isotype: IgG	Full Name: neural precursor cell expressed, developmentally down-regulated 4	
Immunogen Catalog Number: AG16291	Calculated MW: 1319 aa, 149 kDa	
	Observed MW: 115 kDa	

Applications

Tested Applications:
WB, IF/ICC, FC (Intra), Cytometric bead array, Indirect ELISA

Species Specificity:
human, mouse, rat

Product Information

83112-4-PBS targets NEDD4 as part of a matched antibody pair:

MP00234-1: 83112-2-PBS capture and 83112-4-PBS detection (validated in Cytometric bead array)

Unconjugated rabbit recombinant monoclonal antibody in PBS only (BSA and azide free) storage buffer at a concentration of 1 mg/mL, ready for conjugation. Created using Proteintech's proprietary in-house recombinant technology. Recombinant production enables unrivalled batch-to-batch consistency, easy scale-up, and future security of supply.

This conjugation ready format makes antibodies ideal for use in many applications including: ELISAs, multiplex assays requiring matched pairs, mass cytometry, and multiplex imaging applications. Antibody use should be optimized by the end user for each application and assay.

Background Information

NEDD4 and similar proteins discovered subsequently became a family of HECT ligases, comprising 9 human proteins including NEDD4, NEDD4-2 (NEDD4L), ITCH, SMURF1, SMURF2, WWP1, WWP2, NEDL1 and NEDL2. NEDD4 is a highly evolutionarily conserved protein from yeast to man, and was initially cloned as a highly expressed gene in the early embryonic brain. NEDD4 is frequently overexpressed in many different types of cancer, and decreased levels of NEDD4 can also be associated with cancer. It can be a potential therapeutic target for the treatment of human cancer. (PMID: 25527121). The human NEDD4 gene is located on chromosome 15q21.3 and comprises 30 exons (HGNC:7727) shown to encode a ~120 kDa protein. Otherwise there is a 75 kDa isoform in addition to full length NEDD4 (PMID: 24907641).

Storage

Storage:
Store at -80°C.
Storage Buffer:
PBS Only

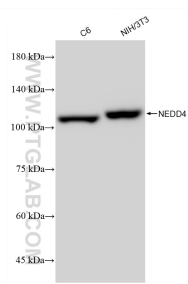
For technical support and original validation data for this product please contact:

T: 1 (888) 4PTGLAB (1-888-478-4522) (toll free in USA), or 1(312) 455-8498 (outside USA)

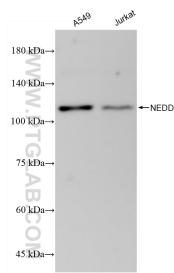
E: proteintech@ptglab.com
W: ptglab.com

This product is exclusively available under Proteintech Group brand and is not available to purchase from any other manufacturer.

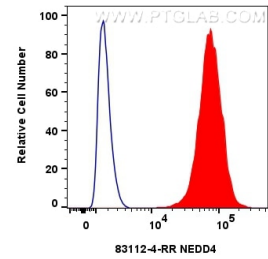
Selected Validation Data



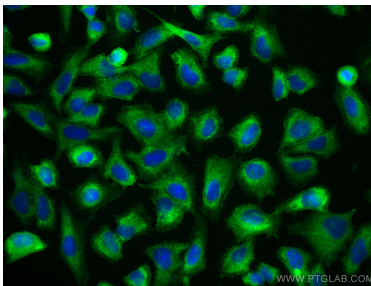
Various lysates were subjected to SDS PAGE followed by western blot with 83112-4-RR (NEDD4 antibody) at dilution of 1:10000 incubated at room temperature for 1.5 hours. This data was developed using the same antibody clone with 83112-4-PBS in a different storage buffer formulation.



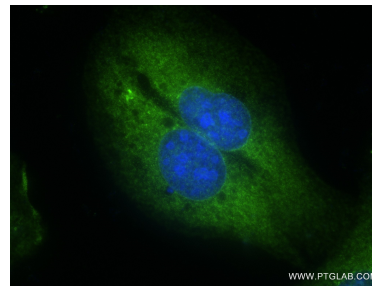
Various lysates were subjected to SDS PAGE followed by western blot with 83112-4-RR (NEDD4 antibody) at dilution of 1:10000 incubated at room temperature for 1.5 hours. This data was developed using the same antibody clone with 83112-4-PBS in a different storage buffer formulation.



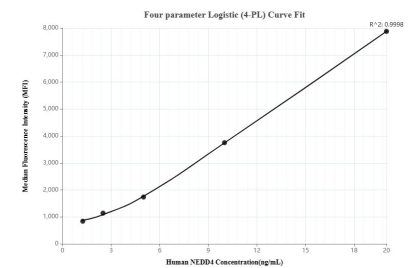
1×10^6 U2OS cells were intracellularly stained with 0.25 ug NEDD4 Recombinant antibody (83112-4-RR, Clone:230478D8) and CoraLite@488-Conjugated Goat Anti-Rabbit IgG(H+L) (SA00013-2) (red). Cells were fixed with 4% PFA and permeabilized with Flow Cytometry Perm Buffer (PF00011-C). This data was developed using the same antibody clone with 83112-4-PBS in a different storage buffer formulation.



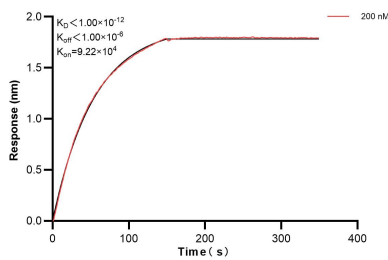
Immunofluorescent analysis of (-20°C Ethanol) fixed U2OS cells using NEDD4 antibody (83112-4-RR, Clone: 230478D8) at dilution of 1:200 and Multi-rAb CoraLite @ Plus 488-Goat Anti-Rabbit Recombinant Secondary Antibody (H+L) (RGAR002). This data was developed using the same antibody clone with 83112-4-PBS in a different storage buffer formulation.



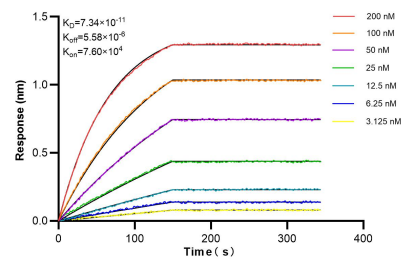
Immunofluorescent analysis of (-20°C Ethanol) fixed U2OS cells using NEDD4 antibody (83112-4-RR, Clone: 230478D8) at dilution of 1:250 and CoraLite@488-Conjugated AffiniPure Goat Anti-Rabbit IgG(H+L) (SA00013-2). This data was developed using the same antibody clone with 83112-4-PBS in a different storage buffer formulation.



Cytometric bead array standard curve of MP00234-1, NEDD4 Recombinant Matched Antibody Pair, PBS Only. Capture antibody: 83112-2-PBS. Detection antibody: 83112-4-PBS. Standard: Ag16291. Range: 1.25-20 ng/mL



Biolayer interferometry (BLI) kinetic assay of 83112-4-PBS against Human NEDD4 was performed. The affinity constant is below 1 pM.



Biolayer interferometry (BLI) kinetic assays of 83112-4-RR against Human NEDD4 were performed. The affinity constant is 73.4 pM.