

For Research Use Only

NEDD4 Recombinant antibody, PBS Only (Capture/Detector)

Catalog Number:83112-2-PBS



Basic Information

Catalog Number: 83112-2-PBS	GenBank Accession Number: BC152452	Purification Method: Protein A purification
Size: 100ug , Concentration: 1mg/ml by Nanodrop;	GeneID (NCBI): 4734	CloneNo.: 230478A1
Source: Rabbit	UNIPROT ID: P46934	
Isotype: IgG	Full Name: neural precursor cell expressed, developmentally down-regulated 4	
Immunogen Catalog Number: AG16291	Calculated MW: 1319 aa, 149 kDa	

Applications

Tested Applications:
Cytometric bead array, Sandwich ELISA, Indirect ELISA, Sample test

Species Specificity:
human

Product Information

83112-2-PBS targets NEDD4 as part of a matched antibody pair:

MP00234-1: 83112-2-PBS capture and 83112-4-PBS detection (validated in Cytometric bead array)

MP00234-2: 83112-5-PBS capture and 83112-2-PBS detection (validated in Sandwich ELISA)

Unconjugated rabbit recombinant monoclonal antibody in PBS only (BSA and azide free) storage buffer at a concentration of 1 mg/mL, ready for conjugation. Created using Proteintech's proprietary in-house recombinant technology. Recombinant production enables unrivalled batch-to-batch consistency, easy scale-up, and future security of supply.

This conjugation ready format makes antibodies ideal for use in many applications including: ELISAs, multiplex assays requiring matched pairs, mass cytometry, and multiplex imaging applications. Antibody use should be optimized by the end user for each application and assay.

Storage

Storage:
Store at -80°C.
Storage Buffer:
PBS Only

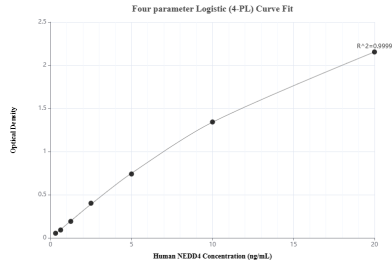
For technical support and original validation data for this product please contact:

T: 1 (888) 4PTGLAB (1-888-478-4522) (toll free in USA), or 1(312) 455-8498 (outside USA)

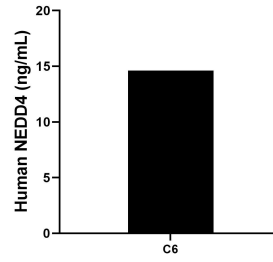
E: proteintech@ptglab.com
W: ptglab.com

This product is exclusively available under Proteintech Group brand and is not available to purchase from any other manufacturer.

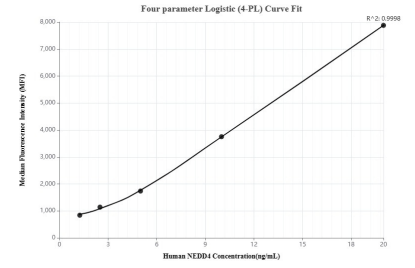
Selected Validation Data



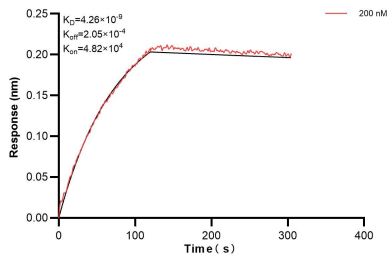
Sandwich ELISA standard curve of MP00234-2, Human NEDD4 Recombinant Matched Antibody Pair - PBS only. 83112-5-PBS was coated to a plate as the capture antibody and incubated with serial dilutions of standard Ag16291. 83112-2-PBS was HRP conjugated as the detection antibody. Range: 0.313-20 ng/mL



The mean NEDD4 concentration was determined to be 14.63 ng/mL in C6 cell extract based on a 2.0 mg/mL extract load.



Cytometric bead array standard curve of MP00234-1, NEDD4 Recombinant Matched Antibody Pair, PBS Only. Capture antibody: 83112-2-PBS. Detection antibody: 83112-4-PBS. Standard: Ag16291. Range: 1.25-20 ng/mL



Bi-layer interferometry (BLI) kinetic assay of 83112-2-PBS against Human NEDD4 was performed. The affinity constant is 4.26 nM.