

For Research Use Only

CLPX Recombinant antibody

Catalog Number: 83097-1-RR **Featured Product**



Basic Information

Catalog Number: 83097-1-RR	GenBank Accession Number: NM_006660	Purification Method: Protein A purification
Size: 100ul , Concentration: 1000 ug/ml by Nanodrop;	GeneID (NCBI): 10845	CloneNo.: 230346H1
Source: Rabbit	UNIPROT ID: O76031	Recommended Dilutions: WB 1:2000-1:10000 IHC 1:50-1:500
Isotype: IgG	Full Name: ClpX caseinolytic peptidase X homolog (E. coli)	
Immunogen Catalog Number: AG34213	Calculated MW: 69 kDa	
	Observed MW: 63 kDa	

Applications

Tested Applications:
WB, IHC, FC (Intra), ELISA

Species Specificity:
human, mouse, rat

Note-IHC: suggested antigen retrieval with TE buffer pH 9.0; (*) Alternatively, antigen retrieval may be performed with citrate buffer pH 6.0

Positive Controls:

WB : HepG2 cells, A549 cells, HeLa cells, K-652 cells, HT-1080 cells, Saos-2 cells

IHC : human liver tissue, mouse stomach tissue, rat testis tissue

Storage

Storage:
Store at -20°C. Stable for one year after shipment.
Storage Buffer:
PBS with 0.02% sodium azide and 50% glycerol pH 7.3.
Aliquoting is unnecessary for -20°C storage

*** 20ul sizes contain 0.1% BSA

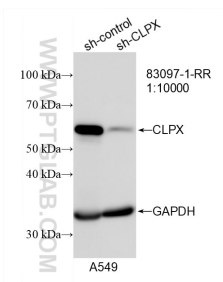
For technical support and original validation data for this product please contact:

T: 1 (888) 4PTGLAB (1-888-478-4522) (toll free in USA), or 1(312) 455-8498 (outside USA)

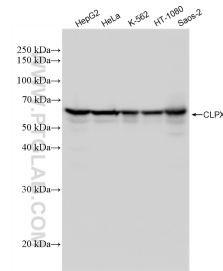
E: proteintech@ptglab.com
W: ptglab.com

This product is exclusively available under Proteintech Group brand and is not available to purchase from any other manufacturer.

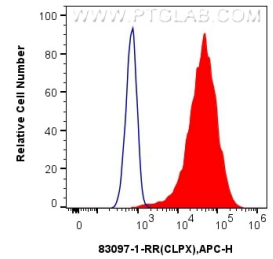
Selected Validation Data



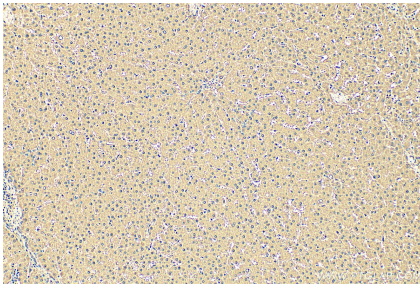
WB result of CLPX antibody (83097-1-RR; 1:30000; incubated at room temperature for 1.5 hours) with sh-Control and sh-CLPX transfected A549 cells.



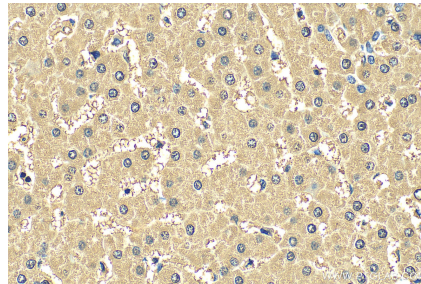
Various lysates were subjected to SDS PAGE followed by western blot with 83097-1-RR (CLPX antibody) at dilution of 1:5000 incubated at room temperature for 1.5 hours.



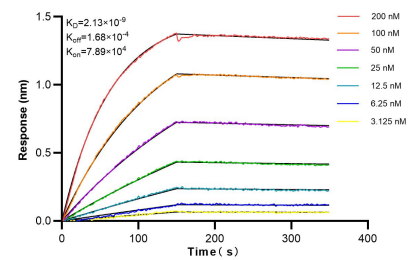
1×10^6 HeLa cells were intracellularly stained with 0.25 ug Anti-Human CLPX (83097-1-RR, Clone:230346H1) and APC-Conjugated AffiniPure Goat Anti-Rabbit IgG(H+L)(red), or 0.25 ug Rabbit IgG control Rabbit PolyAb (30000-0-AP) (blue). Cells were fixed with 4% PFA and permeabilized with Flow Cytometry Perm Buffer (PF00011-C).



Immunohistochemical analysis of paraffin-embedded human liver tissue slide using 83097-1-RR (CLPX antibody) at dilution of 1:200 (under 10x lens). Heat mediated antigen retrieval with Tris-EDTA buffer (pH 9.0).



Immunohistochemical analysis of paraffin-embedded human liver tissue slide using 83097-1-RR (CLPX antibody) at dilution of 1:200 (under 40x lens). Heat mediated antigen retrieval with Tris-EDTA buffer (pH 9.0).



Biolayer interferometry (BLI) kinetic assays of 83097-1-RR against Human CLPX were performed. The affinity constant is 2.13 nM.