

For Research Use Only

CLPX Recombinant antibody, PBS Only (Capture/Detector)

Catalog Number: 83097-1-PBS

Featured Product



Basic Information

Catalog Number:

83097-1-PBS

Size:

100ug, Concentration: 1mg/ml by
Nanodrop;

Source:

Rabbit

Isotype:

IgG

Immunogen Catalog Number:

AG34213

GenBank Accession Number:

NM_006660

GeneID (NCBI):

10845

UNIPROT ID:

O76031

Full Name:

ClpX caseinolytic peptidase X
homolog (E. coli)

Calculated MW:

69 kDa

Observed MW:

63 kDa

Purification Method:

Protein A purification

CloneNo.:

230346H1

Applications

Tested Applications:

WB, IHC, FC (Intra), Cytometric bead array, Sandwich
ELISA, Indirect ELISA, Sample test

Species Specificity:

human, mouse, rat

Product Information

83097-1-PBS targets CLPX as part of a matched antibody pair:

MP00277-1: 83097-1-PBS capture and 83097-2-PBS detection (validated in Cytometric bead array)

MP00277-3: 83097-2-PBS capture and 83097-1-PBS detection (validated in Sandwich ELISA)

Unconjugated rabbit recombinant monoclonal antibody in PBS only (BSA and azide free) storage buffer at a concentration of 1 mg/mL, ready for conjugation. Created using Proteintech's proprietary in-house recombinant technology. Recombinant production enables unrivalled batch-to-batch consistency, easy scale-up, and future security of supply.

This conjugation ready format makes antibodies ideal for use in many applications including: ELISAs, multiplex assays requiring matched pairs, mass cytometry, and multiplex imaging applications. Antibody use should be optimized by the end user for each application and assay.

Storage

Storage:

Store at -80°C.

Storage Buffer:

PBS Only

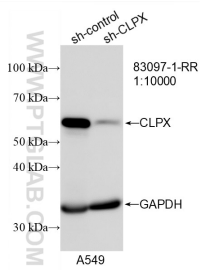
For technical support and original validation data for this product please contact:

T: 1 (888) 4PTGLAB (1-888-478-4522) (toll free
in USA), or 1(312) 455-8498 (outside USA)

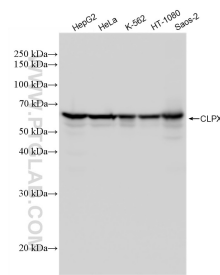
E: proteintech@ptglab.com
W: ptglab.com

This product is exclusively available under Proteintech Group brand and is not available to purchase from any other manufacturer.

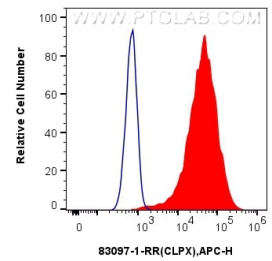
Selected Validation Data



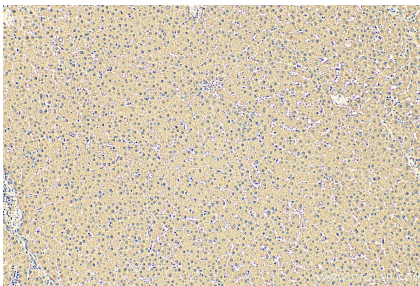
WB result of CLPX antibody (83097-1-RR; 1:30000; incubated at room temperature for 1.5 hours) with sh-Control and sh-CLPX transfected A549 cells. This data was developed using the same antibody clone with 83097-1-PBS in a different storage buffer formulation.



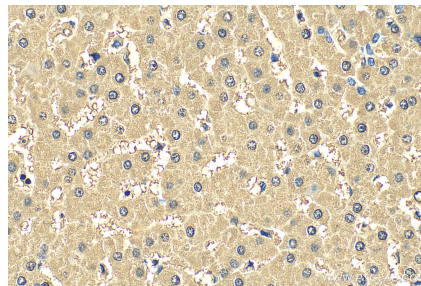
Various lysates were subjected to SDS PAGE followed by western blot with 83097-1-RR (CLPX antibody) at dilution of 1:5000 incubated at room temperature for 1.5 hours. This data was developed using the same antibody clone with 83097-1-PBS in a different storage buffer formulation.



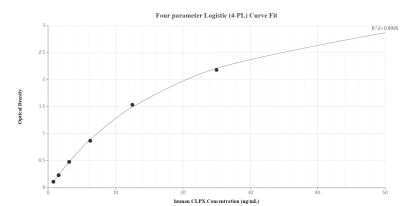
1×10^6 HeLa cells were intracellularly stained with 0.25 ug Anti-Human CLPX (83097-1-RR, Clone:230346H1) and APC-Conjugated AffiniPure Goat Anti-Rabbit IgG(H+L)(red), or 0.25 ug Rabbit IgG control Rabbit PolyAb (30000-0-AP) (blue). Cells were fixed with 4% PFA and permeabilized with Flow Cytometry Perm Buffer (PF00011-C). This data was developed using the same antibody clone with 83097-1-PBS in a different storage buffer formulation.



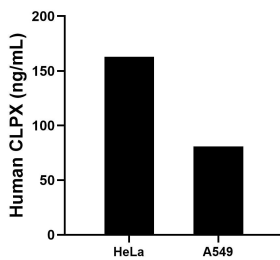
Immunohistochemical analysis of paraffin-embedded human liver tissue slide using 83097-1-RR (CLPX antibody) at dilution of 1:200 (under 10x lens). Heat mediated antigen retrieval with Tris-EDTA buffer (pH 9.0). This data was developed using the same antibody clone with 83097-1-PBS in a different storage buffer formulation.



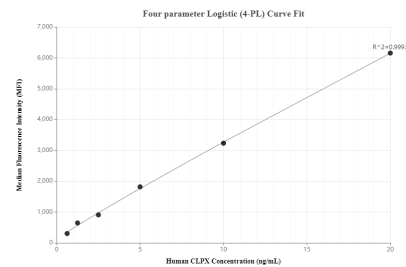
Immunohistochemical analysis of paraffin-embedded human liver tissue slide using 83097-1-RR (CLPX antibody) at dilution of 1:200 (under 40x lens). Heat mediated antigen retrieval with Tris-EDTA buffer (pH 9.0). This data was developed using the same antibody clone with 83097-1-PBS in a different storage buffer formulation.



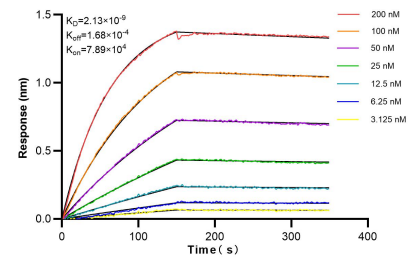
Sandwich ELISA standard curve of MP00277-3, Human CLPX Recombinant Matched Antibody Pair - PBS only. 83097-2-PBS was coated to a plate as the capture antibody and incubated with serial dilutions of standard Ag34213. 83097-1-PBS was HRP conjugated as the detection antibody. Range: 0.78-50 ng/mL.



The mean CLPX concentration was determined to be 163.0 ng/mL in HeLa cell extract based on a 1.2 mg/mL extract load and 80.9 ng/mL in A549 cell extract based on a 1.0 mg/mL extract load.



Cytometric bead array standard curve of MP00277-1, CLPX Recombinant Matched Antibody Pair, PBS Only. Capture antibody: 83097-1-PBS. Detection antibody: 83097-2-PBS. Standard: Ag34213. Range: 0.625-20 ng/mL.



Bi-layer interferometry (BLI) kinetic assays of 83097-1-RR against Human CLPX were performed. The affinity constant is 2.13 nM.