

For Research Use Only

NRF1/nuclear respiratory factor 1 Recombinant antibody, PBS Only

Catalog Number:83092-1-PBS



Basic Information

Catalog Number: 83092-1-PBS	GenBank Accession Number: BC016925	Purification Method: Protein A purification
Size: 100ug , Concentration: 1mg/ml by Nanodrop;	GeneID (NCBI): 4899	CloneNo.: 230394B1
Source: Rabbit	UNIPROT ID: Q16656	
Isotype: IgG	Full Name: nuclear respiratory factor 1	
Immunogen Catalog Number: AG3172	Calculated MW: 522 aa, 56 kDa	
	Observed MW: 70 kDa	

Applications

Tested Applications:
WB, IHC, IF/ICC, FC (Intra), Indirect ELISA

Species Specificity:
human, mouse

Background Information

NRF1, also named as Alpha-pal and NRF-1, belongs to the NRF1/Ewg family. It is a transcription factor that activates the expression of the EIF2S1 (EIF2-alpha) gene. NRF1 is implicated in the control of nuclear genes required for respiration, heme biosynthesis, and mitochondrial DNA transcription and replication. It plays a critical role in regulating the expression of many antioxidant response element (ARE)-dependent genes. NRF1 exists various isoforms and long isoform is about 67 kDa and short isoform is about 45 kDa.

Storage

Storage:
Store at -80°C.
Storage Buffer:
PBS Only

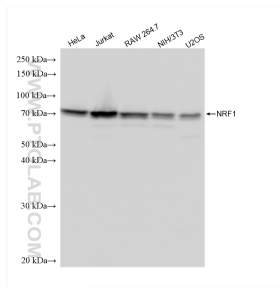
For technical support and original validation data for this product please contact:

T: 1 (888) 4PTGLAB (1-888-478-4522) (toll free
in USA), or 1(312) 455-8498 (outside USA)

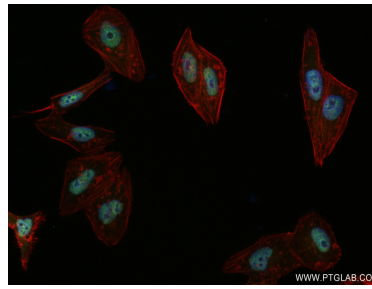
E: proteintech@ptglab.com
W: ptglab.com

This product is exclusively available under Proteintech Group brand and is not available to purchase from any other manufacturer.

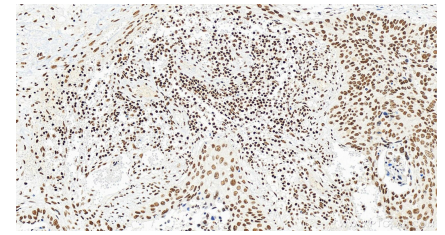
Selected Validation Data



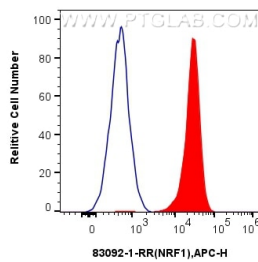
Various lysates were subjected to SDS PAGE followed by western blot with 83092-1-RR (NRF1 antibody) at dilution of 1:5000 incubated at room temperature for 1.5 hours. This data was developed using the same antibody clone with 83092-1-PBS in a different storage buffer formulation.



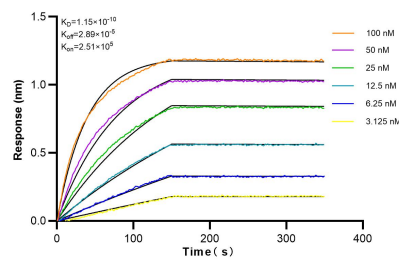
Immunofluorescent analysis of (4% PFA) fixed HepG2 cells using NRF1/nuclear respiratory factor 1 antibody (83092-1-RR, Clone: 230394B1) at dilution of 1:300 and CoraLite@488-Conjugated AffiniPure Goat Anti-Rabbit IgG(H+L) (SA00013-2), CL594-Phalloidin (red). This data was developed using the same antibody clone with 83092-1-PBS in a different storage buffer formulation.



Immunohistochemical analysis of paraffin-embedded human cervical squamous cancer tissue slide using 83092-1-RR (NRF1/nuclear respiratory factor 1 antibody) at dilution of 1:500 (under 20x lens). Heat mediated antigen retrieval with Tris-EDTA buffer (pH 9.0). This data was developed using the same antibody clone with 83092-1-PBS in a different storage buffer formulation.



1×10^6 HEK-293T cells were intracellularly stained with 0.25 μ g Anti-Human NRF1 (83092-1-RR, Clone:230394B1) and APC-Conjugated AffiniPure Goat Anti-Rabbit IgG(H+L)(red), or 0.25 μ g Rabbit IgG control Rabbit PolyAb (30000-0-AP) (blue). Cells were fixed and permeabilized with True-Nuclear Transcription Factor Buffer Set. This data was developed using the same antibody clone with 83092-1-PBS in a different storage buffer formulation.



Biolayer interferometry (BLI) kinetic assays of 83092-1-RR against Human NRF1/nuclear respiratory factor 1 were performed. The affinity constant is 0.115 nM.