

For Research Use Only

# ECM1 Recombinant antibody, PBS Only

Catalog Number: 83067-6-PBS

Featured Product



## Basic Information

**Catalog Number:**

83067-6-PBS

**Size:**

100ug, Concentration: 1mg/ml by Nanodrop;

**Source:**

Rabbit

**Isotype:**

IgG

**GenBank Accession Number:**

BC023505

**GeneID (NCBI):**

1893

**UNIPROT ID:**

Q16610

**Full Name:**

extracellular matrix protein 1

**Calculated MW:**

540 aa, 61 kDa

**Observed MW:**

60-80 kDa

**Purification Method:**

Protein A purification

**CloneNo.:**

230321F12

## Applications

**Tested Applications:**

WB, FC (Intra), Indirect ELISA

**Species Specificity:**

human

## Background Information

ECM1 (extracellular matrix protein 1), also known as URBWD. It is located in secreted, extracellular space, and extracellular matrix, which is mainly expressed in esophagus and gall bladder. The gene encodes a soluble protein that is involved in endochondral bone formation, angiogenesis, and tumor biology. It also interacts with a variety of extracellular and structural proteins, contributing to the maintenance of skin integrity and homeostasis. Mutations in this gene are associated with lipoid proteinosis disorder (also known as hyalinosis cutis et mucosae or Urbach-Wiethe disease) that is characterized by generalized thickening of skin, mucosae and certain viscera. The calculated molecular weight of ECM1 is 60 kDa, and this antibody can recognize the 63 kDa isoform of target, moreover, this protein may have glycosylation modification.

## Storage

**Storage:**

Store at -80°C.

**Storage Buffer:**

PBS Only

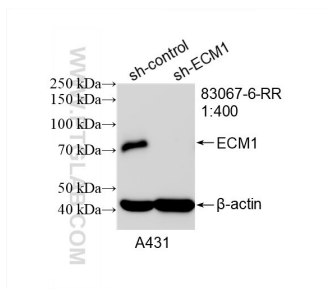
For technical support and original validation data for this product please contact:

T: 1 (888) 4PTGLAB (1-888-478-4522) (toll free in USA), or 1(312) 455-8498 (outside USA)

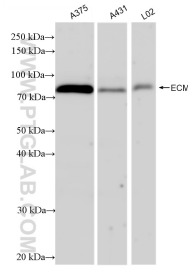
E: [proteintech@ptglab.com](mailto:proteintech@ptglab.com)  
W: [ptglab.com](http://ptglab.com)

**This product is exclusively available under Proteintech Group brand and is not available to purchase from any other manufacturer.**

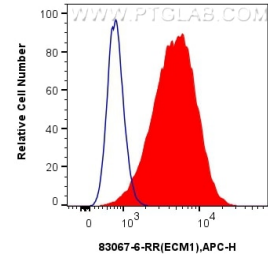
## Selected Validation Data



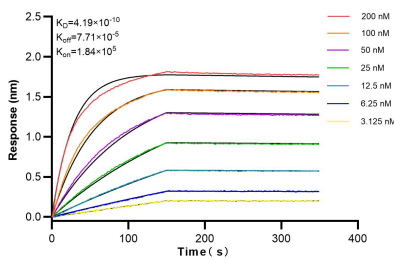
WB result of ECM1 antibody (83067-6-RR; 1:400; incubated at room temperature for 1.5 hours) with sh-Control and sh-ECM1 transfected A431 cells. This data was developed using the same antibody clone with 83067-6-PBS in a different storage buffer formulation.



Various lysates were subjected to SDS PAGE followed by western blot with 83067-6-RR (ECM1 antibody) at dilution of 1:10000 incubated at room temperature for 1.5 hours. This data was developed using the same antibody clone with 83067-6-PBS in a different storage buffer formulation.



$1 \times 10^6$  A375 cells were intracellularly stained with 0.25 ug Anti-Human ECM1 (83067-6-RR, Clone:230321F12) and APC-Conjugated AffiniPure Goat Anti-Rabbit IgG(H+L)(red), or 0.25 ug Rabbit IgG control Rabbit PolyAb (30000-0-AP) (blue). Cells were fixed with 4% PFA and permeabilized with Flow Cytometry Perm Buffer (PF00011-C). This data was developed using the same antibody clone with 83067-6-PBS in a different storage buffer formulation.



Biolayer interferometry (BLI) kinetic assays of 83067-6-RR against Human ECM1 were performed. The affinity constant is 0.419 nM.