

For Research Use Only

ECM1 Recombinant antibody, PBS Only (Capture/Detector)

Catalog Number: 83067-1-PBS



Basic Information

Catalog Number: 83067-1-PBS	GenBank Accession Number: BC023505	Purification Method: Protein A purification
Size: 100ug, Concentration: 1mg/ml by Nanodrop;	GeneID (NCBI): 1893	CloneNo.: 230321A4
Source: Rabbit	UNIPROT ID: Q16610	
Isotype: IgG	Full Name: extracellular matrix protein 1	
	Calculated MW: 540 aa, 61 kDa	

Applications

Tested Applications:
Cytometric bead array, Sandwich ELISA, Indirect ELISA,
Sample test

Species Specificity:
human

Product Information

83067-1-PBS targets ECM1 as part of a matched antibody pair:

MP00011-3: 83067-1-PBS capture and 83067-4-PBS detection (validated in Cytometric bead array)

MP00011-4: 83067-7-PBS capture and 83067-1-PBS detection (validated in Sandwich ELISA)

Unconjugated rabbit recombinant monoclonal antibody in PBS only (BSA and azide free) storage buffer at a concentration of 1 mg/mL, ready for conjugation. Created using Proteintech's proprietary in-house recombinant technology. Recombinant production enables unrivalled batch-to-batch consistency, easy scale-up, and future security of supply.

This conjugation ready format makes antibodies ideal for use in many applications including: ELISAs, multiplex assays requiring matched pairs, mass cytometry, and multiplex imaging applications. Antibody use should be optimized by the end user for each application and assay.

Storage

Storage:
Store at -80°C.
Storage Buffer:
100% PBS pH 7.3

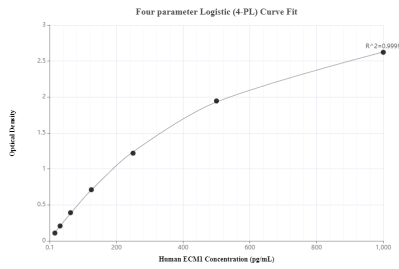
For technical support and original validation data for this product please contact:

T: 1 (888) 4PTGLAB (1-888-478-4522) (toll free
in USA), or 1(312) 455-8498 (outside USA)

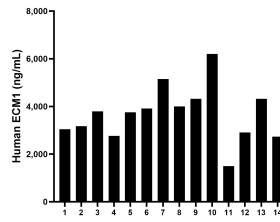
E: proteintech@ptglab.com
W: ptglab.com

This product is exclusively available under Proteintech Group brand and is not available to purchase from any other manufacturer.

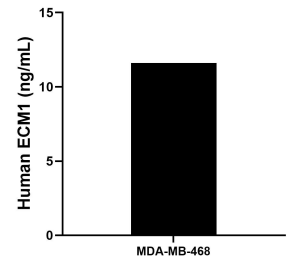
Selected Validation Data



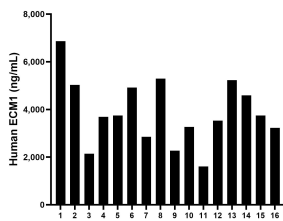
Sandwich ELISA standard curve of MP00011-4, Human ECM1 Recombinant Matched Antibody Pair - PBS only. 83067-7-PBS was coated to a plate as the capture antibody and incubated with serial dilutions of standard Eg0533. 83067-1-PBS was HRP conjugated as the detection antibody. Range: 15.6-1000 pg/mL



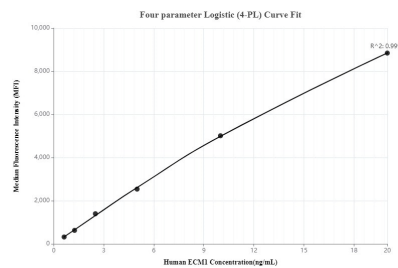
Plasma of fourteen individual healthy human donors was measured. The ECM1 concentration of detected samples was determined to be 3,683.47 ng/mL with a range of 1,495.22-6,198.62 ng/mL



MDA-MB-468 were cultured in DMEM supplemented with 10% fetal calf serum, 50 μM β-mercaptoethanol, 2 mM L-glutamine, 100 U/mL penicillin and 100 μg/mL streptomycin sulfate. The cell culture supernatant was removed, assayed for human ECM1, and measured 11.6 ng/mL



Serum of fourteen individual healthy human donors was measured. The ECM1 concentration of detected samples was determined to be 3,875.31 ng/mL with a range of 1,605.39-6,867.83 ng/mL



Cytometric bead array standard curve of MP00011-3, ECM1 Recombinant Matched Antibody Pair, PBS Only. Capture antibody: 83067-1-PBS. Detection antibody: 83067-4-PBS. Standard: Eg0533. Range: 0.625-20 ng/mL