

For Research Use Only

# SOX2 Recombinant antibody, PBS Only



Catalog Number:83059-5-PBS

## Basic Information

<b>Catalog Number:</b> 83059-5-PBS	<b>GenBank Accession Number:</b> BC013923	<b>Purification Method:</b> Protein A purification
<b>Size:</b> 100ug , Concentration: 1mg/ml by Nanodrop;	<b>GeneID (NCBI):</b> 6657	<b>CloneNo.:</b> 230225G1
<b>Source:</b> Rabbit	<b>UNIPROT ID:</b> P48431	
<b>Isotype:</b> IgG	<b>Full Name:</b> SRY (sex determining region Y)-box 2	
<b>Immunogen Catalog Number:</b> AG0612	<b>Calculated MW:</b> 34 kDa	

## Applications

**Tested Applications:**  
IF/ICC, Indirect ELISA

**Species Specificity:**  
human

## Background Information

Sox2, also known as SRY (sex determining region Y)-box 2, is a transcription factor essential for maintaining self-renewal of undifferentiated ES cells and is one of the key transcription factors used to reprogram mouse and human fibroblasts to a pluripotent state. Sox2 expressed in undifferentiated pluripotent stem cells and germ cells during development. Affinity purified rabbit anti-Sox2 antibody can be used to demonstrate pluripotency of ES and iPS cells. This antibody is a rabbit polyclonal antibody raised against an internal region of human SOX2. a rare undifferentiated cell population that is intermingled with the Bergmann glia of the adult murine cerebellar cortex, expresses the stem cell markers Sox2 and Nestin, and lacks markers of glial or neuronal differentiation. Sox2-expressing neural stem cells in the subgranular zone (SGZ) , a well-known stem cell niche of the adult brain.

## Storage

**Storage:**  
Store at -80°C.

**Storage Buffer:**  
PBS Only

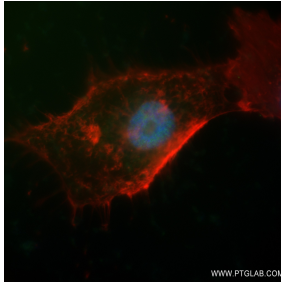
For technical support and original validation data for this product please contact:

T: 1 (888) 4PTGLAB (1-888-478-4522) (toll free in USA), or 1(312) 455-8498 (outside USA)

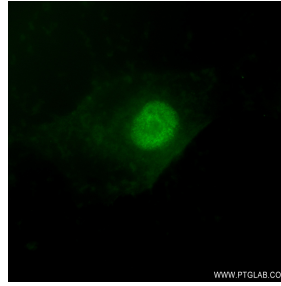
E: [proteintech@ptglab.com](mailto:proteintech@ptglab.com)  
W: [ptglab.com](http://ptglab.com)

**This product is exclusively available under Proteintech Group brand and is not available to purchase from any other manufacturer.**

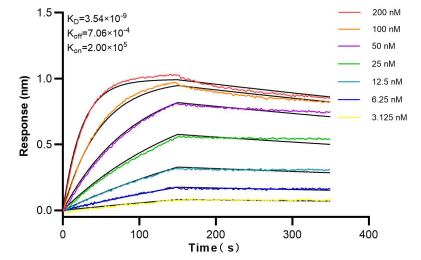
## Selected Validation Data



Immunofluorescent analysis of (4% PFA) fixed U-251 cells using SOX2 antibody (83059-5-RR, Clone: 230225G1 ) at dilution of 1:300 and CoraLite® 488-Conjugated AffiniPure Goat Anti-Mouse IgG(H+L) (SA00013-1).CL594-Phalloidin (red). This data was developed using the same antibody clone with 83059-5-PBS in a different storage buffer formulation.



Immunofluorescent analysis of (4% PFA) fixed U-251 cells using SOX2 antibody (83059-5-RR, Clone: 230225G1 ) at dilution of 1:300 and CoraLite® 488-Conjugated AffiniPure Goat Anti-Mouse IgG(H+L) (SA00013-1). This data was developed using the same antibody clone with 83059-5-PBS in a different storage buffer formulation.



Bi-layer interferometry (BLI) kinetic assays of 83059-5-RR against Human SOX2 were performed. The affinity constant is 3.54 nM.