

For Research Use Only

# Cytokeratin 13 Recombinant antibody, PBS Only



Catalog Number: 83058-4-PBS

## Basic Information

<b>Catalog Number:</b> 83058-4-PBS	<b>GenBank Accession Number:</b> BC002661	<b>Purification Method:</b> Protein A purification
<b>Size:</b> 100ug, Concentration: 1mg/ml by Nanodrop;	<b>GeneID (NCBI):</b> 3860	<b>CloneNo.:</b> 230366E8
<b>Source:</b> Rabbit	<b>UNIPROT ID:</b> P13646	
<b>Isotype:</b> IgG	<b>Full Name:</b> keratin 13	
<b>Immunogen Catalog Number:</b> AG0217	<b>Calculated MW:</b> 50 kDa	

## Applications

**Tested Applications:**  
IF/ICC, Indirect ELISA

**Species Specificity:**  
Human

## Background Information

Keratin 13 is a member of the keratin family. The keratins are intermediate filament proteins responsible for the structural integrity of epithelial cells and are subdivided into cytokeratins and hair keratins. Most of the type I cytokeratins consist of acidic proteins which are arranged in pairs of heterotypic keratin chains. This type I cytokeratin is paired with keratin 4 and expressed in the suprabasal layers of non-cornified stratified epithelia. Mutations in keratin 13 gene and keratin 4 have been associated with the autosomal dominant disorder White Sponge Nevus. The type I cytokeratins are clustered in a region of chromosome 17q21.2.

## Storage

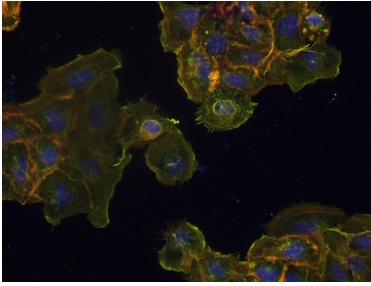
**Storage:**  
Store at -80°C.

**Storage Buffer:**  
PBS Only

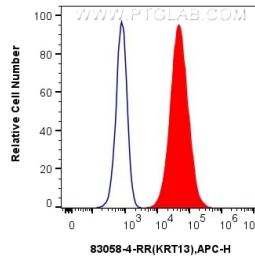
For technical support and original validation data for this product please contact:  
T: 1 (888) 4PTGLAB (1-888-478-4522) (toll free in USA), or 1(312) 455-8498 (outside USA)      E: [proteintech@ptglab.com](mailto:proteintech@ptglab.com)  
W: [ptglab.com](http://ptglab.com)

This product is exclusively available under Proteintech Group brand and is not available to purchase from any other manufacturer.

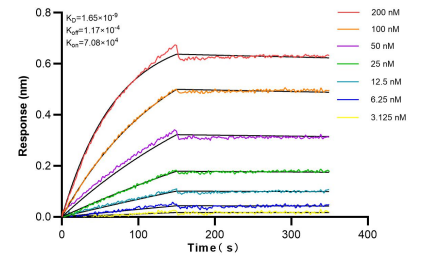
## Selected Validation Data



Immunofluorescent analysis of (4% PFA) fixed A431 cells using Cytokeratin 13 antibody (83058-4-RR, Clone: 230366E8) at dilution of 1:200 and CoraLite®488-Conjugated AffiniPure Goat Anti-Rabbit IgG(H+L) (SA00013-2). This data was developed using the same antibody clone with 83058-4-PBS in a different storage buffer formulation.



$1 \times 10^6$  A431 cells were intracellularly stained with 0.25  $\mu$ g Anti-Human KRT 13 (83058-4-RR, Clone:230366E8) and APC-Conjugated AffiniPure Goat Anti-Rabbit IgG(H+L) (red), or 0.25  $\mu$ g Rabbit IgG control Rabbit PolyAb (30000-0-AP) (blue). Cells were fixed with 4% PFA and permeabilized with Flow Cytometry Perm Buffer (PF00011-C). This data was developed using the same antibody clone with 83058-4-PBS in a different storage buffer formulation.



Bi-layer interferometry (BLI) kinetic assays of 83058-4-RR against Human Cytokeratin 13 were performed. The affinity constant is 1.65 nM.