

For Research Use Only

SURF1 Recombinant antibody, PBS Only (Detector)



Catalog Number: 83052-5-PBS

Basic Information

Catalog Number: 83052-5-PBS	GenBank Accession Number: BC028314	Purification Method: Protein A purification
Size: 100ug , Concentration: 1mg/ml by Nanodrop;	GeneID (NCBI): 6834	CloneNo.: 230210F11
Source: Rabbit	UNIPROT ID: Q15526	
Isotype: IgG	Full Name: surfeit 1	
Immunogen Catalog Number: AG3959	Calculated MW: 33 kDa	

Applications

Tested Applications:

Cytometric bead array, Indirect ELISA, IP, IF/ICC, IHC

Species Specificity:

mouse, human

Product Information

83052-5-PBS targets SURF1 as part of a matched antibody pair:

MP00034-3: 83052-2-PBS capture and 83052-5-PBS detection (validated in Cytometric bead array)

Unconjugated rabbit recombinant monoclonal antibody in PBS only (BSA and azide free) storage buffer at a concentration of 1 mg/mL, ready for conjugation. Created using Proteintech's proprietary in-house recombinant technology. Recombinant production enables unrivalled batch-to-batch consistency, easy scale-up, and future security of supply.

This conjugation ready format makes antibodies ideal for use in many applications including: ELISAs, multiplex assays requiring matched pairs, mass cytometry, and multiplex imaging applications. Antibody use should be optimized by the end user for each application and assay.

Storage

Storage:

Store at -80°C.

Storage Buffer:

100% PBS pH 7.3

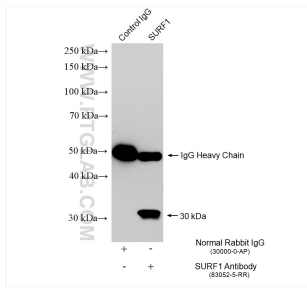
For technical support and original validation data for this product please contact:

T: 1 (888) 4PTGLAB (1-888-478-4522) (toll free in USA), or 1(312) 455-8498 (outside USA)

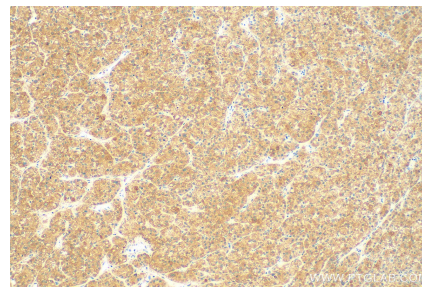
E: proteintech@ptglab.com
W: ptglab.com

This product is exclusively available under Proteintech Group brand and is not available to purchase from any other manufacturer.

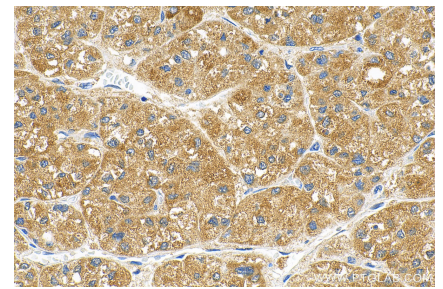
Selected Validation Data



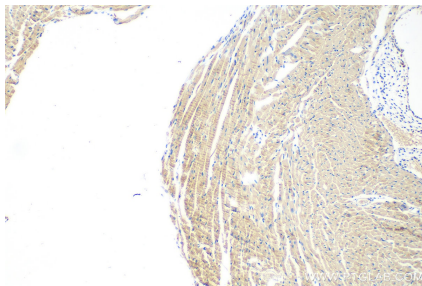
IP result of anti-SURF1 (IP:83052-5-RR, 4ug; Detection:83052-5-RR 1:2000) with HeLa cells lysate 1050 ug. This data was developed using the same antibody clone with 83052-5-PBS in a different storage buffer formulation.



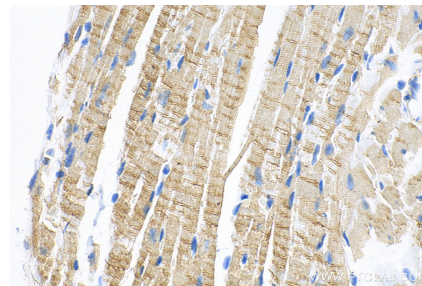
Immunohistochemical analysis of paraffin-embedded human liver cancer tissue slide using 83052-5-RR (SURF1 antibody) at dilution of 1:200 (under 10x lens). Heat mediated antigen retrieval with Tris-EDTA buffer (pH 9.0). This data was developed using the same antibody clone with 83052-5-PBS in a different storage buffer formulation.



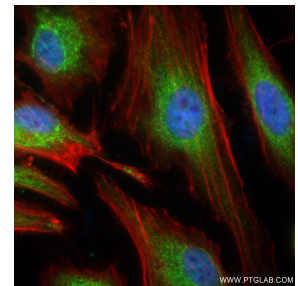
Immunohistochemical analysis of paraffin-embedded human liver cancer tissue slide using 83052-5-RR (SURF1 antibody) at dilution of 1:200 (under 40x lens). Heat mediated antigen retrieval with Tris-EDTA buffer (pH 9.0). This data was developed using the same antibody clone with 83052-5-PBS in a different storage buffer formulation.



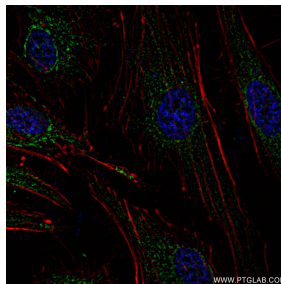
Immunohistochemical analysis of paraffin-embedded mouse heart tissue slide using 83052-5-RR (SURF1 antibody) at dilution of 1:200 (under 10x lens). Heat mediated antigen retrieval with Tris-EDTA buffer (pH 9.0). This data was developed using the same antibody clone with 83052-5-PBS in a different storage buffer formulation.



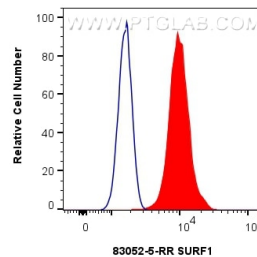
Immunohistochemical analysis of paraffin-embedded mouse heart tissue slide using 83052-5-RR (SURF1 antibody) at dilution of 1:200 (under 40x lens). Heat mediated antigen retrieval with Tris-EDTA buffer (pH 9.0). This data was developed using the same antibody clone with 83052-5-PBS in a different storage buffer formulation.



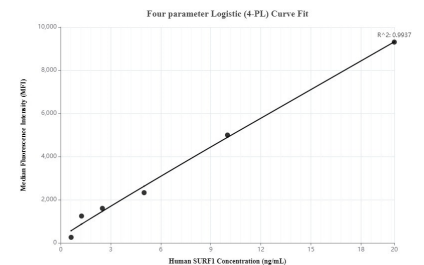
Immunofluorescent analysis of (4% PFA) fixed HeLa cells using SURF1 antibody (83052-5-RR, Clone: 230210F11) at dilution of 1:300 and CoraLite@488-Conjugated AffiniPure Goat Anti-Mouse IgG(H+L) (SA00013-1). This data was developed using the same antibody clone with 83052-5-PBS in a different storage buffer formulation.



Immunofluorescent analysis of (4% PFA) fixed HeLa cells using SURF1 antibody (83052-5-RR, Clone: 230210F11) at dilution of 1:300 and CoraLite@488-Conjugated AffiniPure Goat Anti-Mouse IgG(H+L) (SA00013-1). This data was developed using the same antibody clone with 83052-5-PBS in a different storage buffer formulation.



1x10⁶ HepG2 cells were intracellularly stained with 0.4 ug SURF1 Recombinant antibody (83052-5-RR, Clone:230210F11) and CoraLite@488-Conjugated AffiniPure Goat Anti-Rabbit IgG(H+L) (SA00013-2)(red), or 0.4 ug Isotype Control (blue). Cells were fixed with 4% PFA and permeabilized with Flow Cytometry Perm Buffer (PF00011-C). This data was developed using the same antibody clone with 83052-5-PBS in a different storage buffer formulation.



Cytometric bead array standard curve ofMP00034-3, SURF1 Recombinant Matched Antibody Pair, PBS Only. Capture antibody: 83052-2-PBS. Detection antibody: 83052-5-PBS. Standard: Ag3959. Range: 0.625-20 ng/mL.