

For Research Use Only

SURF1 Recombinant antibody, PBS Only (Capture)

Catalog Number: 83052-2-PBS



Basic Information

Catalog Number: 83052-2-PBS	GenBank Accession Number: BC028314	Purification Method: Protein A purification
Size: 100ug, Concentration: 1mg/ml by Nanodrop;	GeneID (NCBI): 6834	CloneNo.: 230210D1
Source: Rabbit	UNIPROT ID: Q15526	
Isotype: IgG	Full Name: surfeit 1	
Immunogen Catalog Number: AG3959	Calculated MW: 33 kDa	

Applications

Tested Applications:
Cytometric bead array, Sandwich ELISA, Indirect ELISA,
Sample test

Species Specificity:
human

Product Information

83052-2-PBS targets SURF1 as part of a matched antibody pair:

MP00034-3: 83052-2-PBS capture and 83052-5-PBS detection (validated in Cytometric bead array)

MP00034-4: 83052-2-PBS capture and 83052-8-PBS detection (validated in Sandwich ELISA)

Unconjugated rabbit recombinant monoclonal antibody in PBS only (BSA and azide free) storage buffer at a concentration of 1 mg/mL, ready for conjugation. Created using Proteintech's proprietary in-house recombinant technology. Recombinant production enables unrivalled batch-to-batch consistency, easy scale-up, and future security of supply.

This conjugation ready format makes antibodies ideal for use in many applications including: ELISAs, multiplex assays requiring matched pairs, mass cytometry, and multiplex imaging applications. Antibody use should be optimized by the end user for each application and assay.

Storage

Storage:
Store at -80°C.
Storage Buffer:
100% PBS pH 7.3

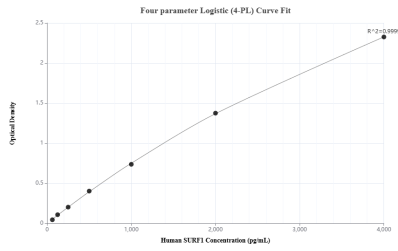
For technical support and original validation data for this product please contact:

T: 1 (888) 4PTGLAB (1-888-478-4522) (toll free
in USA), or 1(312) 455-8498 (outside USA)

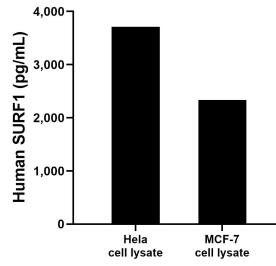
E: proteintech@ptglab.com
W: ptglab.com

This product is exclusively available under Proteintech Group brand and is not available to purchase from any other manufacturer.

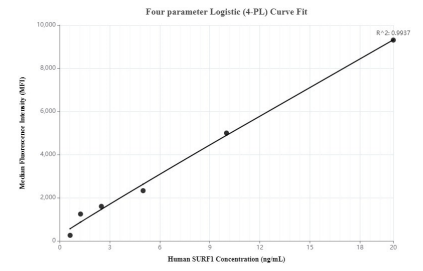
Selected Validation Data



Sandwich ELISA standard curve of MP00034-4, Human SURF1 Recombinant Matched Antibody Pair - PBS only. 83052-2-PBS was coated to a plate as the capture antibody and incubated with serial dilutions of standard Ag3959. 83052-8-PBS was HRP conjugated as the detection antibody. Range: 62.5-4000 pg/mL



HeLa and MCF-7 cell lysates were measured. The human SURF1 concentration of detected samples was determined to be 3,709.4 pg/mL (based on a 6.4 mg/mL extract load) in HeLa cell lysate and 2,335.0 pg/mL (based on a 4.3 mg/mL extract load) in MCF-7 cell lysate.



Cytometric bead array standard curve of MP00034-3, SURF1 Recombinant Matched Antibody Pair, PBS Only. Capture antibody: 83052-2-PBS. Detection antibody: 83052-5-PBS. Standard: Ag3959. Range: 0.625-20 ng/mL