

For Research Use Only

CD200 Recombinant antibody, PBS Only (Capture)

Catalog Number: 83051-1-PBS



Basic Information

Catalog Number: 83051-1-PBS	GenBank Accession Number: BC022522	Purification Method: Protein A purification
Size: 100ug, Concentration: 1mg/ml by Nanodrop;	GeneID (NCBI): 4345	CloneNo.: 230268A7
Source: Rabbit	UNIPROT ID: P41217	Affinity: $K_D = 2.44 \times 10^{-9}M$
Isotype: IgG	Full Name: CD200 molecule	$K_{Off} = 4.33 \times 10^{-4}M$
	Calculated MW: 269 aa, 30 kDa	$K_{On} = 1.77 \times 10^5M$

Applications

Tested Applications:
Cytometric bead array, Indirect ELISA

Species Specificity:
human

Product Information

83051-1-PBS targets CD200 as part of a matched antibody pair:

MP00030-2: 83051-1-PBS capture and 83051-2-PBS detection (validated in Cytometric bead array)

MP00030-3: 83051-1-PBS capture and 83051-4-PBS detection (validated in Cytometric bead array)

Unconjugated rabbit recombinant monoclonal antibody in PBS only (BSA and azide free) storage buffer at a concentration of 1 mg/mL, ready for conjugation. Created using Proteintech's proprietary in-house recombinant technology. Recombinant production enables unrivalled batch-to-batch consistency, easy scale-up, and future security of supply.

This conjugation ready format makes antibodies ideal for use in many applications including: ELISAs, multiplex assays requiring matched pairs, mass cytometry, and multiplex imaging applications. Antibody use should be optimized by the end user for each application and assay.

Storage

Storage:
Store at -80°C.

Storage Buffer:
100% PBS pH 7.3

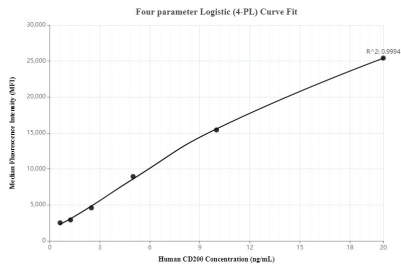
For technical support and original validation data for this product please contact:

T: 1 (888) 4PTGLAB (1-888-478-4522) (toll free in USA), or 1(312) 455-8498 (outside USA)

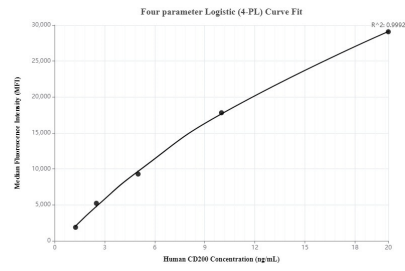
E: proteintech@ptglab.com
W: ptglab.com

This product is exclusively available under Proteintech Group brand and is not available to purchase from any other manufacturer.

Selected Validation Data



Cytometric bead array standard curve of MP00030-2, CD200 Recombinant Matched Antibody Pair - PBS only. Capture antibody: 83051-1-PBS. Detection antibody: 83051-2-PBS. Standard: Eg0006. Range: 0.625-20 ng/mL



Cytometric bead array standard curve of MP00030-3, CD200 Recombinant Matched Antibody Pair - PBS only. Capture antibody: 83051-1-PBS. Detection antibody: 83051-4-PBS. Standard: Eg0006. Range: 1.25-20 ng/mL