

For Research Use Only

VEGFR2/KDR Recombinant antibody, PBS Only (Detector)

Catalog Number: 83049-5-PBS



Basic Information

Catalog Number: 83049-5-PBS	GenBank Accession Number: NM_002253	Purification Method: Protein A purification
Size: 100ug, Concentration: 1 mg/ml by Nanodrop;	GeneID (NCBI): 3791	CloneNo.: 230238E8
Source: Rabbit	UNIPROT ID: P35968-1	
Isotype: IgG	Full Name: kinase insert domain receptor (a type III receptor tyrosine kinase)	
	Calculated MW: 152kd	

Applications

Tested Applications:
Sandwich ELISA, Indirect ELISA, Sample test

Species Specificity:
human

Product Information

83049-5-PBS targets VEGFR2/KDR as part of a matched antibody pair.

MP00012-3: 83049-2-PBS capture and 83049-5-PBS detection (validated in Sandwich ELISA)

Unconjugated rabbit recombinant monoclonal antibody in PBS only (BSA and azide free) storage buffer at a concentration of 1 mg/mL, ready for conjugation. Created using Proteintech's proprietary in-house recombinant technology. Recombinant production enables unrivalled batch-to-batch consistency, easy scale-up, and future security of supply.

This conjugation ready format makes antibodies ideal for use in many applications including: ELISAs, multiplex assays requiring matched pairs, mass cytometry, and multiplex imaging applications. Antibody use should be optimized by the end user for each application and assay.

Storage

Storage:
Store at -80°C.

Storage Buffer:
PBS Only

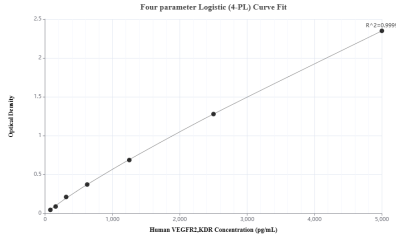
For technical support and original validation data for this product please contact:

T: 1 (888) 4PTGLAB (1-888-478-4522) (toll free
in USA), or 1(312) 455-8498 (outside USA)

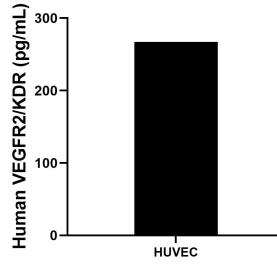
E: proteintech@ptglab.com
W: ptglab.com

This product is exclusively available under Proteintech Group brand and is not available to purchase from any other manufacturer.

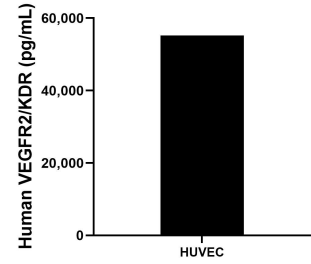
Selected Validation Data



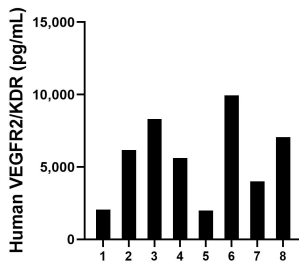
Sandwich ELISA standard curve of MP00012-3, Human VEGFR2/KDR Recombinant Matched Antibody Pair - PBS only. 83049-2-PBS was coated to a plate as the capture antibody and incubated with serial dilutions of standard Eg0218.83049-5-PBS was HRP conjugated as the detection antibody. Range: 78.1-5000 pg/mL



HUVEC was cultured in RPMI supplemented with 10% fetal bovine serum, 50 μ M β -mercaptoethanol, 2 mM L-glutamine, 100 U/mL penicillin, and 100 μ g/mL streptomycin sulfate. An aliquot of the cell culture supernatant was removed, assayed for human VEGFR2/KDR, and measured 267.3 pg/mL



The mean human VEGFR2/KDR concentration was determined to be 55,216.6 pg/mL in HUVEC cell extract based on a 0.4 mg/mL extract load.



Plasma of eight individual healthy human donors was measured. The human VEGFR2/KDR concentration of detected samples was determined to be 5,643.5 ng/mL with a range of 1,988.2 - 9,946.0 pg/mL