

For Research Use Only

VEGFR2/KDR Recombinant antibody, PBS Only (Capture)

Catalog Number: 83049-2-PBS



Basic Information

Catalog Number: 83049-2-PBS	GenBank Accession Number: NM_002253	Purification Method: Protein A purification
Size: 100ug, Concentration: 1 mg/ml by Nanodrop;	GeneID (NCBI): 3791	CloneNo.: 230238D2
Source: Rabbit	UNIPROT ID: P35968-1	Affinity: $K_D = 1.15 \times 10^{-9}M$
Isotype: IgG	Full Name: kinase insert domain receptor (a type III receptor tyrosine kinase)	$K_{Off} = 2.30 \times 10^{-4}M$ $K_{On} = 2.00 \times 10^5M$
	Calculated MW: 152kd	

Applications

Tested Applications:
Cytometric bead array, Sandwich ELISA, Indirect ELISA,
Sample test

Species Specificity:
human

Product Information

83049-2-PBS targets VEGFR2/KDR as part of a matched antibody pair:

MP00012-1: 83049-2-PBS capture and 83049-3-PBS detection (validated in Cytometric bead array)

MP00012-2: 83049-2-PBS capture and 83049-1-PBS detection (validated in Cytometric bead array)

MP00012-3: 83049-2-PBS capture and 83049-5-PBS detection (validated in Sandwich ELISA)

Unconjugated rabbit recombinant monoclonal antibody in PBS only (BSA and azide free) storage buffer at a concentration of 1 mg/mL, ready for conjugation. Created using Proteintech's proprietary in-house recombinant technology. Recombinant production enables unrivalled batch-to-batch consistency, easy scale-up, and future security of supply.

This conjugation ready format makes antibodies ideal for use in many applications including: ELISAs, multiplex assays requiring matched pairs, mass cytometry, and multiplex imaging applications. Antibody use should be optimized by the end user for each application and assay.

Storage

Storage:
Store at -80°C.
Storage Buffer:
100% PBS pH 7.3

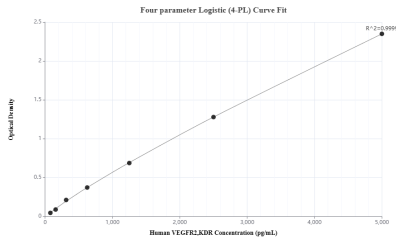
For technical support and original validation data for this product please contact:

T: 1 (888) 4PTGLAB (1-888-478-4522) (toll free
in USA), or 1(312) 455-8498 (outside USA)

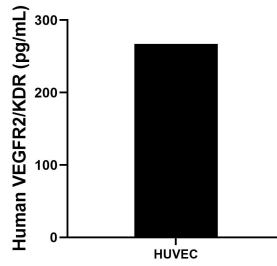
E: proteintech@ptglab.com
W: ptglab.com

This product is exclusively available under Proteintech Group brand and is not available to purchase from any other manufacturer.

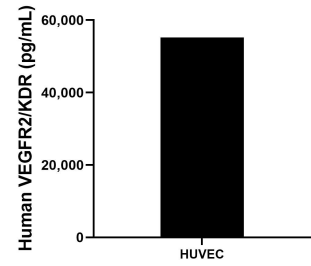
Selected Validation Data



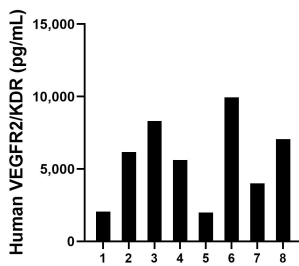
Sandwich ELISA standard curve of MP00012-3, Human VEGFR2/KDR Recombinant Matched Antibody Pair - PBS only. 83049-2-PBS was coated to a plate as the capture antibody and incubated with serial dilutions of standard Eg0218.83049-5-PBS was HRP conjugated as the detection antibody. Range: 78.1-5000 pg/mL



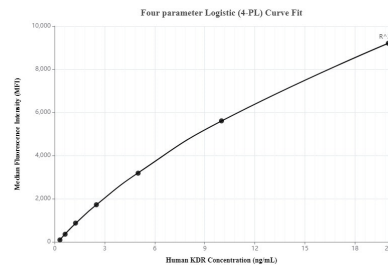
HUVEC was cultured in RPMI supplemented with 10% fetal bovine serum, 50 μ M β -mercaptoethanol, 2 mM L-glutamine, 100 U/mL penicillin, and 100 μ g/mL streptomycin sulfate. An aliquot of the cell culture supernatant was removed, assayed for human VEGFR2/KDR, and measured 267.3 pg/mL



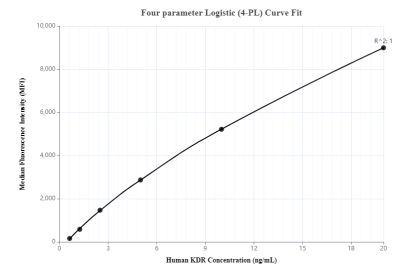
The mean human VEGFR2/KDR concentration was determined to be 55,216.6 pg/mL in HUVEC cell extract based on a 0.4 mg/mL extract load.



Plasma of eight individual healthy human donors was measured. The human VEGFR2/KDR concentration of detected samples was determined to be 5,643.5 ng/mL with a range of 1,988.2 - 9,946.0 pg/mL



Cytometric bead array standard curve of MP00012-1, KDR Recombinant Matched Antibody Pair - PBS only. Capture antibody: 83049-2-PBS. Detection antibody: 83049-3-PBS. Standard: Eg0218. Range: 0.312-20 ng/mL



Cytometric bead array standard curve of MP00012-2, KDR Recombinant Matched Antibody Pair - PBS only. Capture antibody: 83049-2-PBS. Detection antibody: 83049-1-PBS. Standard: Eg0218. Range: 0.625-20 ng/mL