

For Research Use Only

# MTA3 Recombinant antibody, PBS Only (Detector)

Catalog Number: 83042-1-PBS



## Basic Information

<b>Catalog Number:</b> 83042-1-PBS	<b>GenBank Accession Number:</b> BC053631	<b>Purification Method:</b> Protein A purification
<b>Size:</b> 100ug, Concentration: 1mg/ml by Nanodrop;	<b>GeneID (NCBI):</b> 57504	<b>CloneNo.:</b> 230350A8
<b>Source:</b> Rabbit	<b>UNIPROT ID:</b> Q9BTC8	
<b>Isotype:</b> IgG	<b>Full Name:</b> metastasis associated 1 family, member 3	
<b>Immunogen Catalog Number:</b> AG6400	<b>Calculated MW:</b> 68 kDa	

## Applications

**Tested Applications:**  
Cytometric bead array, Sandwich ELISA, Indirect ELISA, Sample test

**Species Specificity:**  
human

## Product Information

83042-1-PBS targets MTA3 as part of a matched antibody pair:

MP00017-2: 83042-3-PBS capture and 83042-1-PBS detection (validated in Cytometric bead array, Sandwich ELISA)

Unconjugated rabbit recombinant monoclonal antibody in PBS only (BSA and azide free) storage buffer at a concentration of 1 mg/mL, ready for conjugation. Created using Proteintech's proprietary in-house recombinant technology. Recombinant production enables unrivalled batch-to-batch consistency, easy scale-up, and future security of supply.

This conjugation ready format makes antibodies ideal for use in many applications including: ELISAs, multiplex assays requiring matched pairs, mass cytometry, and multiplex imaging applications. Antibody use should be optimized by the end user for each application and assay.

## Storage

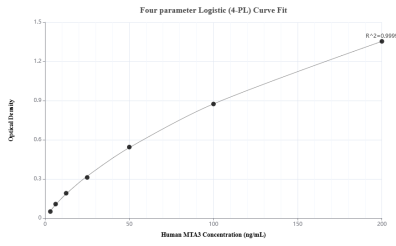
**Storage:**  
Store at -80°C.

**Storage Buffer:**  
100% PBS pH 7.3

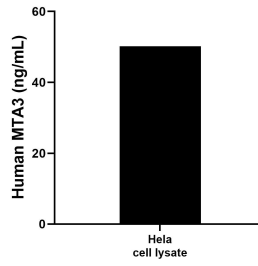
For technical support and original validation data for this product please contact:  
T: 1 (888) 4PTGLAB (1-888-478-4522) (toll free in USA), or 1(312) 455-8498 (outside USA)      E: proteintech@ptglab.com  
W: ptglab.com

This product is exclusively available under Proteintech Group brand and is not available to purchase from any other manufacturer.

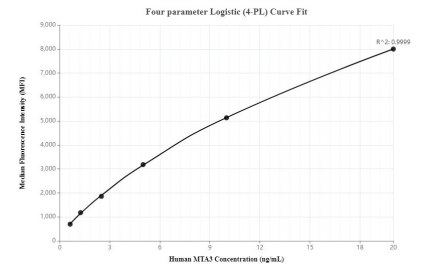
## Selected Validation Data



Sandwich ELISA standard curve of MP00017-2, Human MTA3 Recombinant Matched Antibody Pair - PBS only. 83042-3-PBS was coated to a plate as the capture antibody and incubated with serial dilutions of standard Ag6400. 83042-1-PBS was HRP conjugated as the detection antibody. Range: 3.13-200 ng/mL



HeLa cell lysate was measured. The human MTA3 concentration of detected samples was determined to be 50.22 ng/mL (based on a 3.2 mg/mL extract load).



Cytometric bead array standard curve of MP00017-2, MTA3 Recombinant Matched Antibody Pair, PBS Only. Capture antibody: 83042-3-PBS. Detection antibody: 83042-1-PBS. Standard: Ag6400. Range: 0.625-20 ng/mL