

For Research Use Only

DRD1 Recombinant antibody, PBS Only (Detector)

Catalog Number: 83037-8-PBS



Basic Information

Catalog Number: 83037-8-PBS	GenBank Accession Number: BC074978	Purification Method: Protein A purification
Size: 100ug, Concentration: 1 mg/ml by Nanodrop;	GeneID (NCBI): 1812	CloneNo.: 241782G1
Source: Rabbit	UNIPROT ID: P21728	
Isotype: IgG	Full Name: dopamine receptor D1	
Immunogen Catalog Number: AG12366	Calculated MW: 446 aa, 49 kDa	

Applications

Tested Applications:
Cytometric bead array, Sandwich ELISA, Indirect ELISA,
Sample test

Species Specificity:
human

Product Information

83037-8-PBS targets DRD1 as part of a matched antibody pair:

MP01326-2: 83037-6-PBS capture and 83037-8-PBS detection (validated in Cytometric bead array)

MP01326-3: 83037-7-PBS capture and 83037-8-PBS detection (validated in Sandwich ELISA)

Unconjugated rabbit recombinant monoclonal antibody in PBS only (BSA and azide free) storage buffer at a concentration of 1 mg/mL, ready for conjugation. Created using Proteintech's proprietary in-house recombinant technology. Recombinant production enables unrivalled batch-to-batch consistency, easy scale-up, and future security of supply.

This conjugation ready format makes antibodies ideal for use in many applications including: ELISAs, multiplex assays requiring matched pairs, mass cytometry, and multiplex imaging applications. Antibody use should be optimized by the end user for each application and assay.

Storage

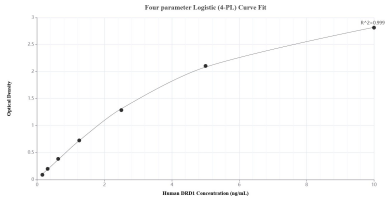
Storage:
Store at -80°C.

Storage Buffer:
PBS Only

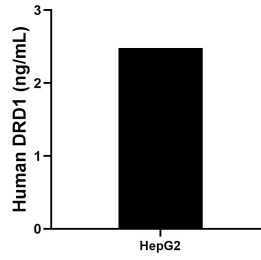
For technical support and original validation data for this product please contact:
T: 1 (888) 4PTGLAB (1-888-478-4522) (toll free in USA), or 1(312) 455-8498 (outside USA) E: proteintech@ptglab.com
W: ptglab.com

This product is exclusively available under Proteintech Group brand and is not available to purchase from any other manufacturer.

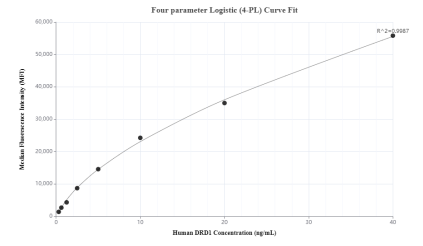
Selected Validation Data



Sandwich ELISA standard curve of MP01326-3, Human DRD1 Recombinant Matched Antibody Pair - PBS only. 83037-7-PBS was coated to a plate as the capture antibody and incubated with serial dilutions of standard Ag12366. 83037-8-PBS was HRP conjugated as the detection antibody. Range: 0.156-10 ng/mL



The mean DRD1 concentration was determined to be 2.48 ng/mL in HepG2 cell extract based on a 2.30 mg/mL extract load.



Cytometric bead array standard curve of MP01326-2, DRD1 Recombinant Matched Antibody Pair, PBS Only. Capture antibody: 83037-6-PBS. Detection antibody: 83037-8-PBS. Standard: Ag12366. Range: 0.313-40 ng/mL