

For Research Use Only

SLC29A3 Recombinant antibody, PBS Only (Detector)



Catalog Number: 83036-1-PBS

Basic Information

Catalog Number: 83036-1-PBS	GenBank Accession Number: BC120996	Purification Method: Protein A purification
Size: 100ug, Concentration: 1mg/ml by Nanodrop;	GeneID (NCBI): 55315	CloneNo.: 230281C12
Source: Rabbit	UNIPROT ID: Q9BZD2	
Isotype: IgG	Full Name: solute carrier family 29 (nucleoside transporters), member 3	
Immunogen Catalog Number: AG18563	Calculated MW: 475 aa, 52 kDa	

Applications

Tested Applications:
WB, Indirect ELISA, Cytometric bead array

Species Specificity:
Human

Product Information

83036-1-PBS targets SLC29A3 as part of a matched antibody pair:

MP00061-1: 83036-2-PBS capture and 83036-1-PBS detection (validated in Cytometric bead array)

Unconjugated rabbit recombinant monoclonal antibody in PBS only (BSA and azide free) storage buffer at a concentration of 1 mg/mL, ready for conjugation. Created using Proteintech's proprietary in-house recombinant technology. Recombinant production enables unrivalled batch-to-batch consistency, easy scale-up, and future security of supply.

This conjugation ready format makes antibodies ideal for use in many applications including: ELISAs, multiplex assays requiring matched pairs, mass cytometry, and multiplex imaging applications. Antibody use should be optimized by the end user for each application and assay.

Storage

Storage:
Store at -80°C.

Storage Buffer:
100% PBS pH 7.3

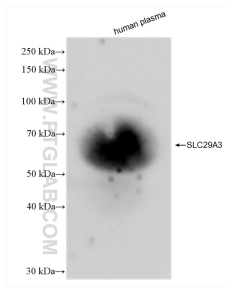
For technical support and original validation data for this product please contact:

T: 1 (888) 4PTGLAB (1-888-478-4522) (toll free in USA), or 1(312) 455-8498 (outside USA)

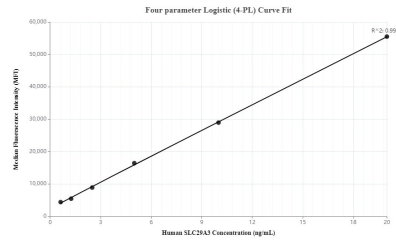
E: proteintech@ptglab.com
W: ptglab.com

This product is exclusively available under Proteintech Group brand and is not available to purchase from any other manufacturer.

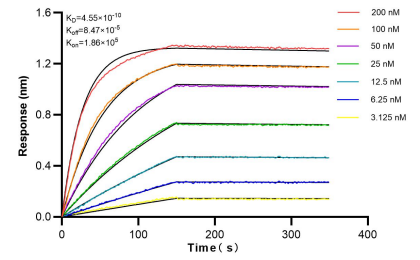
Selected Validation Data



human plasma were subjected to SDS PAGE followed by western blot with 83036-1-RR (SLC29A3 antibody) at dilution of 1:10000 incubated at room temperature for 1.5 hours. This data was developed using the same antibody clone with 83036-1-PBS in a different storage buffer formulation.



Cytometric bead array standard curve of MP00061-1, SLC29A3 Recombinant Matched Antibody Pair, PBS Only. Capture antibody: 83036-2-PBS. Detection antibody: 83036-1-PBS. Standard: Ag18563. Range: 0.625-20 ng/mL.



Bi-layer interferometry (BLI) kinetic assays of 83036-1-RR against Human SLC29A3 were performed. The affinity constant is 0.455 nM.