

For Research Use Only

ABCA3 Recombinant antibody, PBS Only (Detector)

Catalog Number: 83018-4-PBS



Basic Information

Catalog Number: 83018-4-PBS	GenBank Accession Number: BC140895	Purification Method: Protein A purification
Size: 100ug , Concentration: 1mg/ml by Nanodrop;	GeneID (NCBI): 21	CloneNo.: 230194C6
Source: Rabbit	UNIPROT ID: Q99758	
Isotype: IgG	Full Name: ATP-binding cassette, sub-family A (ABC1), member 3	
Immunogen Catalog Number: AG24749		

Applications

Tested Applications:
Cytometric bead array, Sandwich ELISA, Indirect ELISA, Sample test

Species Specificity:
human

Product Information

83018-4-PBS targets ABCA3 as part of a matched antibody pair:

MP00121-2: 83018-2-PBS capture and 83018-4-PBS detection (validated in Cytometric bead array)

MP00121-3: 83018-5-PBS capture and 83018-4-PBS detection (validated in Sandwich ELISA)

Unconjugated rabbit recombinant monoclonal antibody in PBS only (BSA and azide free) storage buffer at a concentration of 1 mg/mL, ready for conjugation. Created using Proteintech's proprietary in-house recombinant technology. Recombinant production enables unrivalled batch-to-batch consistency, easy scale-up, and future security of supply.

This conjugation ready format makes antibodies ideal for use in many applications including: ELISAs, multiplex assays requiring matched pairs, mass cytometry, and multiplex imaging applications. Antibody use should be optimized by the end user for each application and assay.

Storage

Storage:
Store at -80°C.
Storage Buffer:
100% PBS pH 7.3

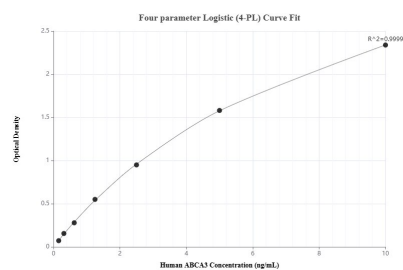
For technical support and original validation data for this product please contact:

T: 1 (888) 4PTGLAB (1-888-478-4522) (toll free in USA), or 1(312) 455-8498 (outside USA)

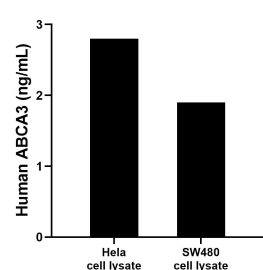
E: proteintech@ptglab.com
W: ptglab.com

This product is exclusively available under Proteintech Group brand and is not available to purchase from any other manufacturer.

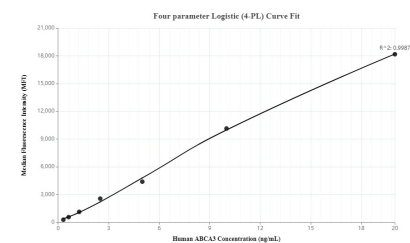
Selected Validation Data



Sandwich ELISA standard curve of MP00121-3, Human ABCA3 Recombinant Matched Antibody Pair - PBS only. 83018-5-PBS was coated to a plate as the capture antibody and incubated with serial dilutions of standard Ag24749. 83018-4-PBS was HRP conjugated as the detection antibody. Range: 0.156-10 ng/mL



HeLa and SW480 cell lysates were measured. The human ABCA3 concentration of detected samples was determined to be 2.8 ng/mL (based on a 2.1 mg/mL extract load) in HeLa cell lysate and 1.9 ng/mL (based on a 2.3 mg/mL extract load) in SW480 cell lysate.



Cytometric bead array standard curve of MP00121-2, ABCA3 Recombinant Matched Antibody Pair, PBS Only. Capture antibody: 83018-2-PBS. Detection antibody: 83018-4-PBS. Standard: Ag24749. Range: 0.313-20 ng/mL