

For Research Use Only

# PPP1R15B Recombinant antibody

Catalog Number: 83016-6-RR

Featured Product



## Basic Information

|  |  |  |
|--|--|--|
| <b>Catalog Number:</b><br>83016-6-RR                           | <b>GenBank Accession Number:</b><br>BC065280                                   | <b>Purification Method:</b><br>Protein A purification                    |
| <b>Size:</b><br>100ul , Concentration: 1000 ug/ml by Nanodrop; | <b>GeneID (NCBI):</b><br>84919   | <b>CloneNo.:</b><br>240052G5   |
| <b>Source:</b><br>Rabbit                                       | <b>UNIPROT ID:</b><br>Q5SWA1   | <b>Recommended Dilutions:</b><br>WB 1:5000-1:50000<br>IF/ICC 1:125-1:500 |
| <b>Isotype:</b><br>IgG   | <b>Full Name:</b><br>protein phosphatase 1, regulatory (inhibitor) subunit 15B |  |
| <b>Immunogen Catalog Number:</b><br>AG6213                     | <b>Calculated MW:</b><br>79 kDa  |  |
|  | <b>Observed MW:</b><br>100-110 kDa   |  |

## Applications

**Tested Applications:**  
WB, IF/ICC, FC (Intra), ELISA

**Species Specificity:**  
human

**Positive Controls:**  
WB : SGC-7901 cells, A2780 cells, MDA-MB-231 cells, SKOV-3 cells  
IF/ICC : HepG2 cells,

## Background Information

Protein phosphatase 1 regulatory subunit 15B(PPP1R15B) is a member of PPP1R15 family, it forms a complex with protein phosphatase1(PP1) and NCK1/2, maintaining low levels of EIF2S1 phosphorylation in unstressed cells, thus is also named constitutive repressor of eIF2alpha phosphorylation (CReP). PPP1R15B is associated in endoplasmic reticulum (ER) stress response resulting to a role in translation regulation. Knock-down of PPP1R15B strongly protected mammalian cells against oxidative stress, peroxynitrite stress, and more modestly against accumulation of malformed proteins in the ER. Recently, PPP1R15B was found to associate with cell membranes and regulate membrane traffic in a PP1c-independent manner, suggesting a novel link between translation and traffic. MW of PPP1R15B is 80 kDa. Observed MW of PPP1R15B is from 100-110 kDa maybe due to phosphorylation (PMID: 28492545).

## Storage

**Storage:**  
Store at -20°C. Stable for one year after shipment.

**Storage Buffer:**  
PBS with 0.02% sodium azide and 50% glycerol pH 7.3.

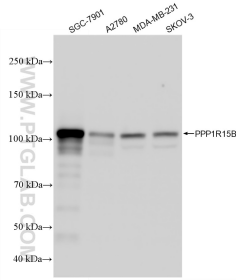
Aliquoting is unnecessary for -20°C storage

\*\*\* 20ul sizes contain 0.1% BSA

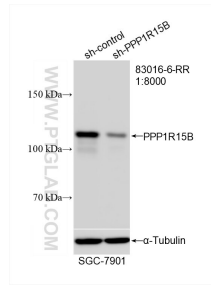
For technical support and original validation data for this product please contact:  
T: 1 (888) 4PTGLAB (1-888-478-4522) (toll free in USA), or 1(312) 455-8498 (outside USA)  
E: proteintech@ptglab.com  
W: ptglab.com

This product is exclusively available under Proteintech Group brand and is not available to purchase from any other manufacturer.

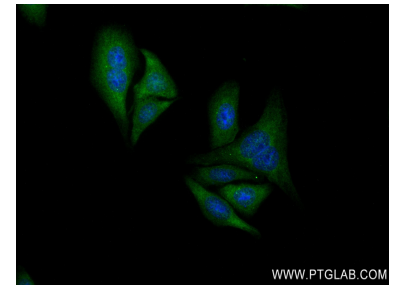
## Selected Validation Data



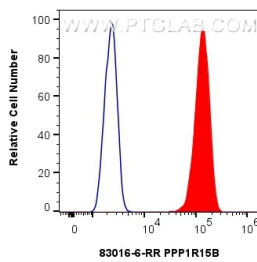
Various lysates were subjected to SDS PAGE followed by western blot with 83016-6-RR (PPP1R15B antibody) at dilution of 1:20000 incubated at room temperature for 1.5 hours.



WB result of PPP1R15B antibody (83016-6-RR; 1:8000; incubated at room temperature for 1.5 hours) with sh-Control and sh-PPP1R15B transfected SGC-7901 cells.



Immunofluorescent analysis of (-20°C Ethanol) fixed HepG2 cells using PPP1R15B antibody (83016-6-RR, Clone: 240052G5) at dilution of 1:250 and CoraLite®488-Conjugated Goat Anti-Rabbit IgG(H+L) (SA00013-2).



1x10<sup>6</sup> U2OS cells were intracellularly stained with 0.25 ug PPP1R15B Recombinant antibody (83016-6-RR, Clone:240052G5) and CoraLite®488-Conjugated Goat Anti-Rabbit IgG(H+L) (SA00013-2) (red), or 0.25 ug Isotype Control (blue). Cells were fixed with 4% PFA and permeabilized with Flow Cytometry Perm Buffer (PF00011-C).