

For Research Use Only

PPP1R15B Recombinant antibody, PBS Only (Detector)

Catalog Number: 83016-2-PBS



Basic Information

Catalog Number: 83016-2-PBS	GenBank Accession Number: BC065280	Purification Method: Protein A purification
Size: 100ug , Concentration: 1 mg/ml by Nanodrop;	GeneID (NCBI): 84919	CloneNo.: 240052B11
Source: Rabbit	UNIPROT ID: Q5SWA1	
Isotype: IgG	Full Name: protein phosphatase 1, regulatory (inhibitor) subunit 15B	
Immunogen Catalog Number: AG6213	Calculated MW: 79 kDa	

Applications

Tested Applications:
Cytometric bead array, Sandwich ELISA, Indirect ELISA, Sample test

Species Specificity:
human

Product Information

83016-2-PBS targets PPP1R15B as part of a matched antibody pair:

MP00002-2: 83016-3-PBS capture and 83016-2-PBS detection (validated in Cytometric bead array, Sandwich ELISA)

MP00002-3: 83016-5-PBS capture and 83016-2-PBS detection (validated in Cytometric bead array)

Unconjugated rabbit recombinant monoclonal antibody in PBS only (BSA and azide free) storage buffer at a concentration of 1 mg/mL, ready for conjugation. Created using Proteintech's proprietary in-house recombinant technology. Recombinant production enables unrivalled batch-to-batch consistency, easy scale-up, and future security of supply.

This conjugation ready format makes antibodies ideal for use in many applications including: ELISAs, multiplex assays requiring matched pairs, mass cytometry, and multiplex imaging applications. Antibody use should be optimized by the end user for each application and assay.

Storage

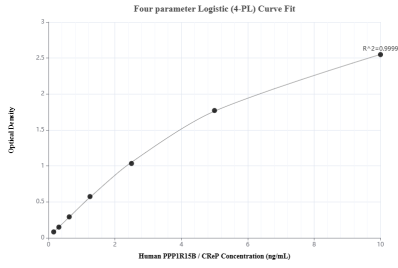
Storage:
Store at -80°C.

Storage Buffer:
100% PBS pH 7.3

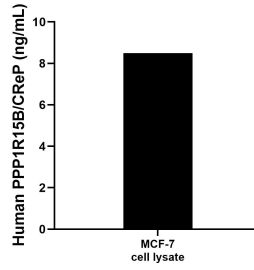
For technical support and original validation data for this product please contact:
T: 1 (888) 4PTGLAB (1-888-478-4522) (toll free in USA), or 1(312) 455-8498 (outside USA) E: proteintech@ptglab.com
W: ptglab.com

This product is exclusively available under Proteintech Group brand and is not available to purchase from any other manufacturer.

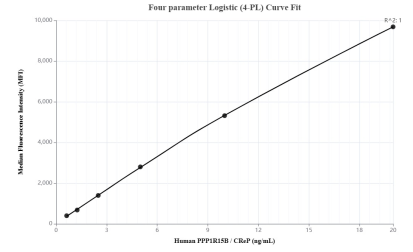
Selected Validation Data



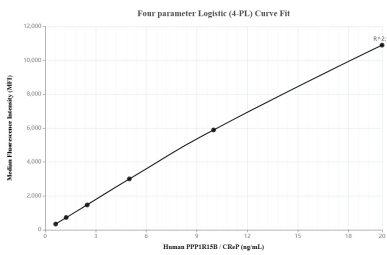
Sandwich ELISA standard curve of MP00002-2, Human PPP1R15B Recombinant Matched Antibody Pair - PBS only. 83016-3-PBS was coated to a plate as the capture antibody and incubated with serial dilutions of standard Ag6213. 83016-2-PBS was HRP conjugated as the detection antibody. Range: 0.156-10 ng/mL



MCF-7 cell lysate was measured. The human PPP1R15B concentration of detected samples was determined to be 8.50 ng/mL (based on a 4.3 mg/mL extract load) in MCF-7 cell lysate.



Cytometric bead array standard curve of MP00002-2, PPP1R15B Recombinant Matched Antibody Pair, PBS Only. Capture antibody: 83016-3-PBS. Detection antibody: 83016-2-PBS. Standard: Ag6213. Range: 0.625-20 ng/mL



Cytometric bead array standard curve of MP00002-3, PPP1R15B Recombinant Matched Antibody Pair, PBS Only. Capture antibody: 83016-5-PBS. Detection antibody: 83016-2-PBS. Standard: Ag6213. Range: 0.625-20 ng/mL