

For Research Use Only

Mouse CD68 Recombinant antibody, PBS Only (Detector)

Catalog Number: 83014-2-PBS



Basic Information

Catalog Number: 83014-2-PBS	GenBank Accession Number: NM_001291058.1	Purification Method: Protein A purification
Size: 100ug , Concentration: 1mg/ml by Nanodrop;	GeneID (NCBI): 12514	CloneNo.: 230504E9
Source: Rabbit	UNIPROT ID: P31996-1	
Isotype: IgG	Full Name: CD68 antigen	
	Calculated MW: 35 kDa	

Applications

Tested Applications:
Cytometric bead array, Sandwich ELISA, Indirect ELISA,
Sample test

Species Specificity:
mouse

Product Information

83014-2-PBS targets CD68 as part of a matched antibody pair:

MP00015-1: 83014-3-PBS capture and 83014-2-PBS detection (validated in Cytometric bead array)

MP00015-2: 83014-4-PBS capture and 83014-2-PBS detection (validated in Cytometric bead array)

MP00015-4: 83014-6-PBS capture and 83014-2-PBS detection (validated in Sandwich ELISA)

Unconjugated rabbit recombinant monoclonal antibody in PBS only (BSA and azide free) storage buffer at a concentration of 1 mg/mL, ready for conjugation. Created using Proteintech's proprietary in-house recombinant technology. Recombinant production enables unrivalled batch-to-batch consistency, easy scale-up, and future security of supply.

This conjugation ready format makes antibodies ideal for use in many applications including: ELISAs, multiplex assays requiring matched pairs, mass cytometry, and multiplex imaging applications. Antibody use should be optimized by the end user for each application and assay.

Storage

Storage:
Store at -80°C.

Storage Buffer:
100% PBS pH 7.3

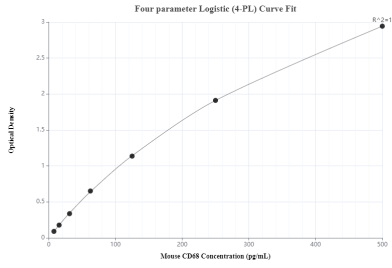
For technical support and original validation data for this product please contact:

T: 1 (888) 4PTGLAB (1-888-478-4522) (toll free
in USA), or 1(312) 455-8498 (outside USA)

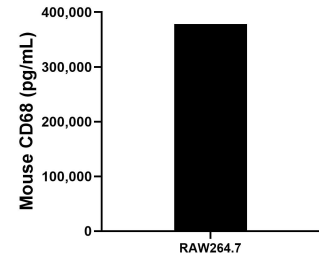
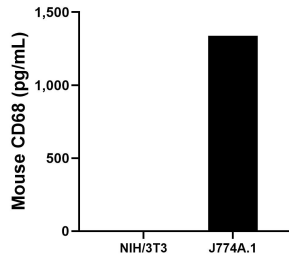
E: proteintech@ptglab.com
W: ptglab.com

This product is exclusively available under Proteintech Group brand and is not available to purchase from any other manufacturer.

Selected Validation Data

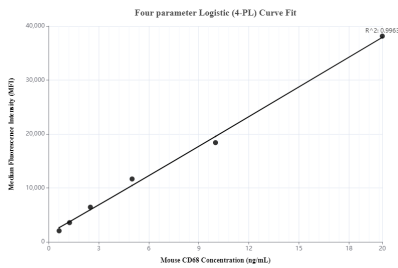


Sandwich ELISA standard curve of MP00015-4, Mouse CD68 Recombinant Matched Antibody Pair - PBS only. 83014-6-PBS was coated to a plate as the capture antibody and incubated with serial dilutions of standard Eg0787. 83014-6-PBS was HRP conjugated as the detection antibody. Range: 7.8-500 pg/mL

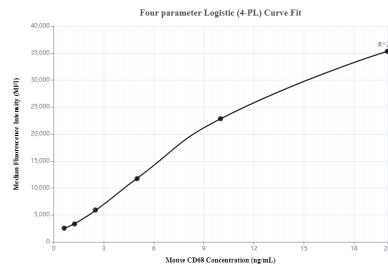


NIH/3T3 mouse embryo fibroblasts were cultured in DMEM supplemented with 10% fetal bovine serum, 2.5 mM L-glutamine, 100 U/mL penicillin and 100 µg/mL streptomycin sulfate. An aliquot of the cell culture supernatant was removed, assayed for mouse CD68 and measured 3.5 pg/mL. J774A.1 mouse reticulum cell sarcoma macrophage cells were cultured in DMEM supplemented with 10% fetal bovine serum, 2.5 mM L-glutamine, 100 U/mL

The mouse CD68 concentration was determined to be 378,104.1 pg/mL in RAW264.7 cell extract based on a 4.2 mg/mL extract load.



Cytometric bead array standard curve of MP00015-1, Mouse CD68 Recombinant Matched Antibody Pair, PBS Only. Capture antibody: 83014-3-PBS. Detection antibody: 83014-2-PBS. Standard: Eg0787. Range: 0.625-20 ng/mL



Cytometric bead array standard curve of MP00015-2, Mouse CD68 Recombinant Matched Antibody Pair, PBS Only. Capture antibody: 83014-4-PBS. Detection antibody: 83014-2-PBS. Standard: Eg0787. Range: 0.625-20 ng/mL