

For Research Use Only

# COL6A3-Specific Recombinant antibody, PBS Only (Detector)

Catalog Number: 83010-5-PBS



## Basic Information

<b>Catalog Number:</b> 83010-5-PBS	<b>GenBank Accession Number:</b> NM_004369	<b>Purification Method:</b> Protein A purification
<b>Size:</b> 100ug, Concentration: 1 mg/ml by Nanodrop;	<b>GeneID (NCBI):</b> 1293	<b>CloneNo.:</b> 230540G6
<b>Source:</b> Rabbit	<b>UNIPROT ID:</b> P12111	
<b>Isotype:</b> IgG	<b>Full Name:</b> collagen, type VI, alpha 3	
<b>Immunogen Catalog Number:</b> AG34752	<b>Calculated MW:</b> 344 kDa	

## Applications

**Tested Applications:**  
Sandwich ELISA, Indirect ELISA, Sample test

**Species Specificity:**  
human

## Product Information

83010-5-PBS targets COL6A3-Specific as part of a matched antibody pair:

MP00027-4: 83010-4-PBS capture and 83010-5-PBS detection (validated in Sandwich ELISA)

Unconjugated rabbit recombinant monoclonal antibody in PBS only (BSA and azide free) storage buffer at a concentration of 1 mg/mL, ready for conjugation. Created using Proteintech's proprietary in-house recombinant technology. Recombinant production enables unrivalled batch-to-batch consistency, easy scale-up, and future security of supply.

This conjugation ready format makes antibodies ideal for use in many applications including: ELISAs, multiplex assays requiring matched pairs, mass cytometry, and multiplex imaging applications. Antibody use should be optimized by the end user for each application and assay.

## Storage

**Storage:**  
Store at -80°C.

**Storage Buffer:**  
PBS Only

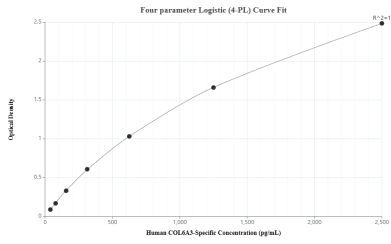
For technical support and original validation data for this product please contact:

T: 1 (888) 4PTGLAB (1-888-478-4522) (toll free in USA), or 1(312) 455-8498 (outside USA)

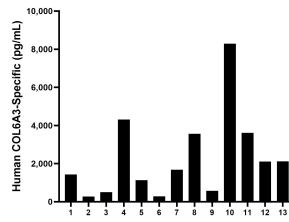
E: [proteintech@ptglab.com](mailto:proteintech@ptglab.com)  
W: [ptglab.com](http://ptglab.com)

**This product is exclusively available under Proteintech Group brand and is not available to purchase from any other manufacturer.**

## Selected Validation Data



Sandwich ELISA standard curve of MP00027-4, Human COL6A3-Specific Monoclonal Matched Antibody Pair - PBS only. 83010-4-PBS was coated to a plate as the capture antibody and incubated with serial dilutions of standard Ag34752. 83010-5-PBS was HRP conjugated as the detection antibody. Range: 39.06-2500 pg/mL



Serum of thirteen individual healthy human donors were measured. The human COL6A3-Specific concentration of detected samples was determined to be 2,299.8 pg/mL with a range of 274.4 - 8,287.33 pg/mL