

For Research Use Only

IL12B Recombinant antibody, PBS Only (Detector)

Catalog Number: 83008-6-PBS



Basic Information

Catalog Number:

83008-6-PBS

Size:

100ug, Concentration: 1 mg/ml by
Nanodrop;

Source:

Rabbit

Isotype:

IgG

GenBank Accession Number:

BC067498

GeneID (NCBI):

3593

UNIPROT ID:

P29460

Full Name:

interleukin 12B (natural killer cell
stimulatory factor 2, cytotoxic
lymphocyte maturation factor 2, p40)

Calculated MW:

328 aa, 37 kDa

Purification Method:

Protein A purification

CloneNo.:

241600G10

Applications

Tested Applications:

Sandwich ELISA, Indirect ELISA, Sample test

Species Specificity:

human

Product Information

83008-6-PBS targets IL12B as part of a matched antibody pair:

MP00035-4: 83008-5-PBS capture and 83008-6-PBS detection (validated in Sandwich ELISA)

Unconjugated rabbit recombinant monoclonal antibody in PBS only (BSA and azide free) storage buffer at a concentration of 1 mg/mL, ready for conjugation. Created using Proteintech's proprietary in-house recombinant technology. Recombinant production enables unrivalled batch-to-batch consistency, easy scale-up, and future security of supply.

This conjugation ready format makes antibodies ideal for use in many applications including: ELISAs, multiplex assays requiring matched pairs, mass cytometry, and multiplex imaging applications. Antibody use should be optimized by the end user for each application and assay.

Storage

Storage:

Store at -80°C.

Storage Buffer:

PBS Only

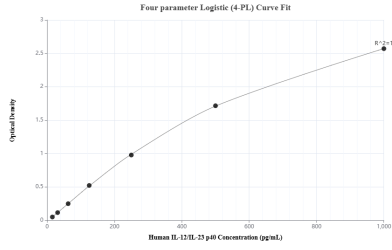
For technical support and original validation data for this product please contact:

T: 1 (888) 4PTGLAB (1-888-478-4522) (toll free
in USA), or 1(312) 455-8498 (outside USA)

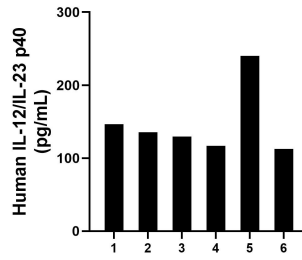
E: proteintech@ptglab.com
W: ptglab.com

This product is exclusively available under Proteintech Group brand and is not available to purchase from any other manufacturer.

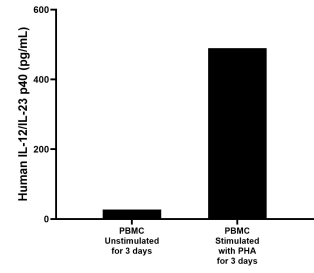
Selected Validation Data



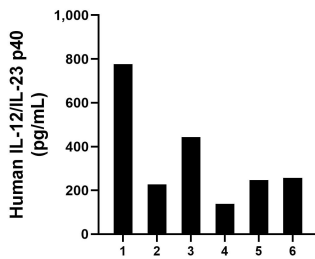
Sandwich ELISA standard curve of MP00035-4, Human IL-12/IL-23 p40 Recombinant Matched Antibody Pair - PBS only. 83008-5-PBS was coated to a plate as the capture antibody and incubated with serial dilutions of standard Eg0431. 83008-6-PBS was HRP conjugated as the detection antibody. Range: 15.6-1000 pg/mL



Plasma of six individual healthy human donors was measured. The human IL-12/IL-23 p40 concentration of detected samples was determined to be 146.9 pg/mL with a range of 112.74 - 240.1 pg/mL.



Human peripheral blood mononuclear cells (PBMC) were cultured unstimulated or stimulated with 10 µg/mL PHA for 3 days. The mean IL-12/IL-23 p40 concentration was determined to be 27.3 pg/mL in unstimulated PBMC supernatant, 489.4 pg/mL in PHA stimulated PBMC supernatant.



Serum of six individual healthy human donors was measured. The human IL-12/IL-23 p40 concentration of detected samples was determined to be 348.4 pg/mL with a range of 138.9 - 776.9 pg/mL.