

For Research Use Only

MTAP Recombinant antibody

Catalog Number:83005-1-RR



Basic Information

Catalog Number: 83005-1-RR	GenBank Accession Number: BC018625	Purification Method: Protein A purification
Size: 100ul , Concentration: 1000 ug/ml by Nanodrop;	GeneID (NCBI): 4507	CloneNo.: 240030A3
Source: Rabbit	UNIPROT ID: Q13126	Recommended Dilutions: WB 1:5000-1:50000
Isotype: IgG	Full Name: methylthioadenosine phosphorylase	
Immunogen Catalog Number: AG2051	Calculated MW: 283 aa, 31 kDa	
	Observed MW: 31 kDa	

Applications

Tested Applications:
WB, ELISA

Species Specificity:
Human, mouse

Positive Controls:

WB : HeLa cells, HCT 116 cells, HT-29 cells, NIH/3T3 cells, C6 cells

Background Information

MTAP is a 5-deoxy-5-methylthioadenosine (MTA) phosphorylase, converting MTA to salvageable intermediates including adenine and 5-methylthioribose-1-phosphate. MTAP is abundant in normal cells, but it is frequently found to be deleted in a variety of cancers. Its deficiency is common in cancer cell lines as well as in primary leukemia, lung cancer, melanoma, bladder cancer, gliomas and breast cancer.

Storage

Storage:
Store at -20°C. Stable for one year after shipment.

Storage Buffer:
PBS with 0.02% sodium azide and 50% glycerol pH 7.3.

Aliquoting is unnecessary for -20°C storage

*** 20ul sizes contain 0.1% BSA

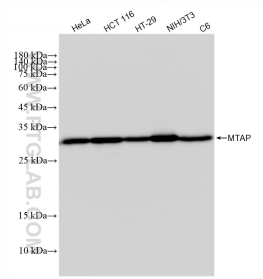
For technical support and original validation data for this product please contact:

T: 1 (888) 4PTGLAB (1-888-478-4522) (toll free in USA), or 1(312) 455-8498 (outside USA)

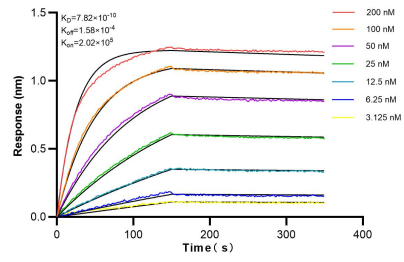
E: proteintech@ptglab.com
W: ptglab.com

This product is exclusively available under Proteintech Group brand and is not available to purchase from any other manufacturer.

Selected Validation Data



Various lysates were subjected to SDS PAGE followed by western blot with 83005-1-RR (MTAP antibody) at dilution of 1:10000 incubated at room temperature for 1.5 hours.



Biolayer interferometry (BLI) kinetic assays of 83005-1-RR against Human MTAP were performed. The affinity constant is 0.782 nM.