

For Research Use Only

MTAP Recombinant antibody, PBS Only (Detector)



Catalog Number: 83005-1-PBS

Basic Information

Catalog Number: 83005-1-PBS	GenBank Accession Number: BC018625	Purification Method: Protein A purification
Size: 100ug, Concentration: 1mg/ml by Nanodrop;	GeneID (NCBI): 4507	CloneNo.: 240030A3
Source: Rabbit	UNIPROT ID: Q13126	
Isotype: IgG	Full Name: methylthioadenosine phosphorylase	
Immunogen Catalog Number: AG2051	Calculated MW: 283 aa, 31 kDa	

Applications

Tested Applications:
WB, Indirect ELISA, Cytometric bead array

Species Specificity:
Human

Product Information

83005-1-PBS targets MTAP as part of a matched antibody pair:

MP00050-1: 83005-2-PBS capture and 83005-1-PBS detection (validated in Cytometric bead array)

MP00050-3: 83005-4-PBS capture and 83005-1-PBS detection (validated in Cytometric bead array)

Unconjugated rabbit recombinant monoclonal antibody in PBS only (BSA and azide free) storage buffer at a concentration of 1 mg/mL, ready for conjugation. Created using Proteintech's proprietary in-house recombinant technology. Recombinant production enables unrivalled batch-to-batch consistency, easy scale-up, and future security of supply.

This conjugation ready format makes antibodies ideal for use in many applications including: ELISAs, multiplex assays requiring matched pairs, mass cytometry, and multiplex imaging applications. Antibody use should be optimized by the end user for each application and assay.

Storage

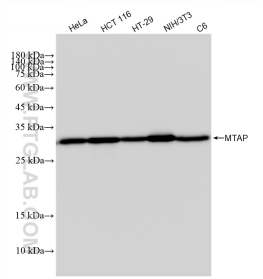
Storage:
Store at -80°C.

Storage Buffer:
100% PBS pH 7.3

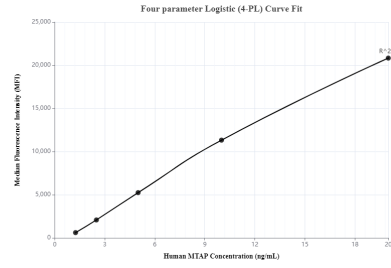
For technical support and original validation data for this product please contact:
T: 1 (888) 4PTGLAB (1-888-478-4522) (toll free in USA), or 1(312) 455-8498 (outside USA) E: proteintech@ptglab.com
W: ptglab.com

This product is exclusively available under Proteintech Group brand and is not available to purchase from any other manufacturer.

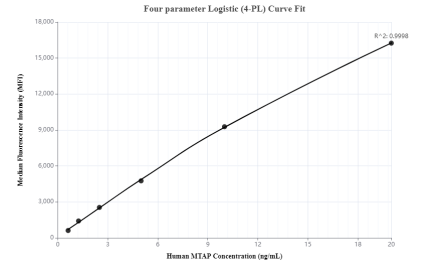
Selected Validation Data



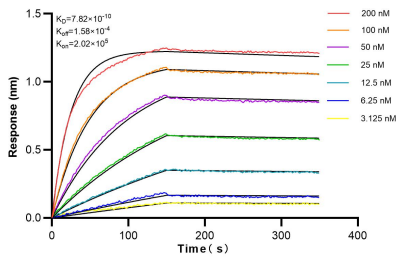
Various lysates were subjected to SDS PAGE followed by western blot with 83005-1-RR (MTAP antibody) at dilution of 1:10000 incubated at room temperature for 1.5 hours. This data was developed using the same antibody clone with 83005-1-PBS in a different storage buffer formulation.



Cytometric bead array standard curve of MP00050-3, MTAP Recombinant Matched Antibody Pair, PBS Only. Capture antibody: 83005-4-PBS. Detection antibody: 83005-1-PBS. Standard: Ag2051. Range: 1.25-20 ng/mL



Cytometric bead array standard curve of MP00050-1, MTAP Recombinant Matched Antibody Pair, PBS Only. Capture antibody: 83005-2-PBS. Detection antibody: 83005-1-PBS. Standard: Ag2051. Range: 0.625-20 ng/mL



Biolayer interferometry (BLI) kinetic assays of 83005-1-RR against Human MTAP were performed. The affinity constant is 0.782 nM.