

For Research Use Only

# RILP Recombinant antibody, PBS Only (Capture)

Catalog Number: 82996-4-PBS

Featured Product



## Basic Information

<b>Catalog Number:</b> 82996-4-PBS	<b>GenBank Accession Number:</b> BC031621	<b>Purification Method:</b> Protein A purification
<b>Size:</b> 100ug, Concentration: 1mg/ml by Nanodrop;	<b>GeneID (NCBI):</b> 83547	<b>CloneNo.:</b> 230208G2
<b>Source:</b> Rabbit	<b>UNIPROT ID:</b> Q96NA2	<b>Affinity:</b> $K_D = 1.04 \times 10^{-11}M$
<b>Isotype:</b> IgG	<b>Full Name:</b> Rab interacting lysosomal protein	$K_{off} = 2.33 \times 10^{-5}M$
<b>Immunogen Catalog Number:</b> AG4472	<b>Calculated MW:</b> 401 aa, 41 kDa	$K_{on} = 2.05 \times 10^6M$
	<b>Observed MW:</b> 50 kDa	

## Applications

**Tested Applications:**  
WB, IHC, Cytometric bead array, Indirect ELISA

**Species Specificity:**  
human

## Product Information

82996-4-PBS targets RILP as part of a matched antibody pair:

MP00025-1: 82996-4-PBS capture and 82996-3-PBS detection (validated in Cytometric bead array)

Unconjugated rabbit recombinant monoclonal antibody in PBS only (BSA and azide free) storage buffer at a concentration of 1 mg/mL, ready for conjugation. Created using Proteintech's proprietary in-house recombinant technology. Recombinant production enables unrivalled batch-to-batch consistency, easy scale-up, and future security of supply.

This conjugation ready format makes antibodies ideal for use in many applications including: ELISAs, multiplex assays requiring matched pairs, mass cytometry, and multiplex imaging applications. Antibody use should be optimized by the end user for each application and assay.

## Storage

**Storage:**  
Store at -80°C.

**Storage Buffer:**  
100% PBS pH 7.3

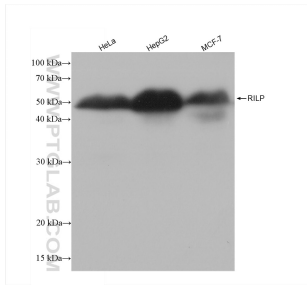
For technical support and original validation data for this product please contact:

T: 1 (888) 4PTGLAB (1-888-478-4522) (toll free in USA), or 1(312) 455-8498 (outside USA)

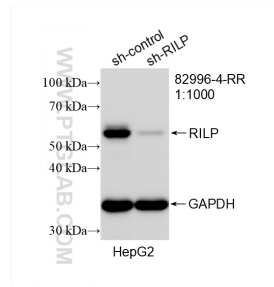
E: [proteintech@ptglab.com](mailto:proteintech@ptglab.com)  
W: [ptglab.com](http://ptglab.com)

**This product is exclusively available under Proteintech Group brand and is not available to purchase from any other manufacturer.**

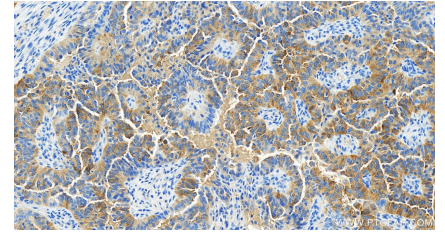
## Selected Validation Data



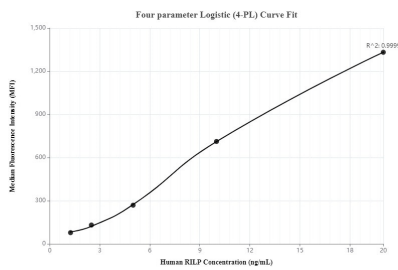
Various lysates were subjected to SDS PAGE followed by western blot with 82996-4-RR (RILP antibody) at dilution of 1:2000 incubated at room temperature for 1.5 hours. This data was developed using the same antibody clone with 82996-4-PBS in a different storage buffer formulation.



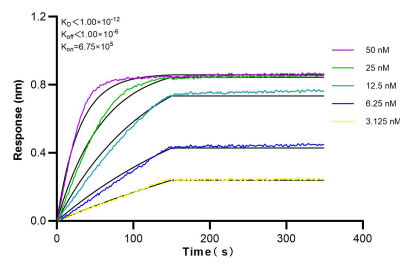
WB result of RILP antibody (82996-4-RR; 1:1000; incubated at room temperature for 1.5 hours) with sh-Control and sh-RILP transfected HepG2 cells. This data was developed using the same antibody clone with 82996-4-PBS in a different storage buffer formulation.



Immunohistochemical analysis of paraffin-embedded human ovarian cancer slide using 82996-4-RR (RILP antibody) at dilution of 1:500 (under 20x lens). Heat mediated antigen retrieval with Tris-EDTA buffer (pH 9.0). This data was developed using the same antibody clone with 82996-4-PBS in a different storage buffer formulation.



Cytometric bead array standard curve of MP00025-1, RILP Recombinant Matched Antibody Pair - PBS only. Capture antibody: 82996-4-PBS. Detection antibody: 82996-3-PBS. Standard: Ag4472. Range: 1.25-20 ng/mL.



Biolayer interferometry (BLI) kinetic assays of 82996-4-RR against Human IGF1BP4 were performed. The affinity constant is below 1 pM.