

For Research Use Only

ADAMDEC1 Recombinant antibody

Catalog Number: 82985-1-RR



Basic Information

Catalog Number: 82985-1-RR	GenBank Accession Number: BC074877	Purification Method: Protein A purification
Size: 100ul , Concentration: 1000 ug/ml by Nanodrop;	GeneID (NCBI): 27299	CloneNo.: 230367F9
Source: Rabbit	UNIPROT ID: O15204	Recommended Dilutions: WB 1:5000-1:50000
Isotype: IgG	Full Name: ADAM-like, decysin 1	
Immunogen Catalog Number: AG12265	Calculated MW: 470 aa, 53 kDa	
	Observed MW: 48-53 kDa	

Applications

Tested Applications: WB, ELISA	Positive Controls: WB : MCF-7 cells,
Species Specificity: Human	

Background Information

Metalloendopeptidase ADAM-Like Decysin 1 (ADAMDEC1) was first identified as a unique member of the matrix metalloprotease (ADAM) family. ADAMs are increasingly recognized as playing an important role in gut homeostasis and bowel inflammation. ADAMDEC1 is abundantly, and almost exclusively, expressed in the gastrointestinal (GI) tract.

Storage

Storage:
Store at -20°C. Stable for one year after shipment.
Storage Buffer:
PBS with 0.02% sodium azide and 50% glycerol pH 7.3.
Aliquoting is unnecessary for -20°C storage

*** 20ul sizes contain 0.1% BSA

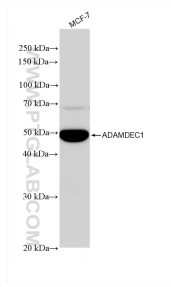
For technical support and original validation data for this product please contact:

T: 1 (888) 4PTGLAB (1-888-478-4522) (toll free in USA), or 1(312) 455-8498 (outside USA)

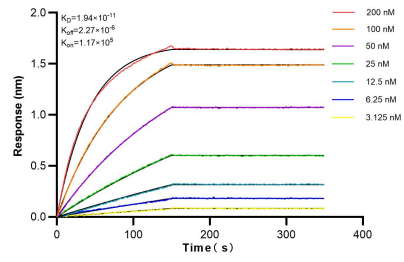
E: proteintech@ptglab.com
W: ptglab.com

This product is exclusively available under Proteintech Group brand and is not available to purchase from any other manufacturer.

Selected Validation Data



MCF-7 cells were subjected to SDS PAGE followed by western blot with 82985-1-RR (ADAMDEC1 antibody) at dilution of 1:10000 incubated at room temperature for 1.5 hours.



Biolayer interferometry (BLI) kinetic assays of 82985-1-RR against Human ADAMDEC1 were performed. The affinity constant is 19.4 pM.