

For Research Use Only

ADAMDEC1 Recombinant antibody, PBS Only



Catalog Number: 82985-1-PBS

Basic Information

Catalog Number: 82985-1-PBS	GenBank Accession Number: BC074877	Purification Method: Protein A purification
Size: 100ug , Concentration: 1mg/ml by Nanodrop;	GeneID (NCBI): 27299	CloneNo.: 230367F9
Source: Rabbit	UNIPROT ID: O15204	
Isotype: IgG	Full Name: ADAM-like, decysin 1	
Immunogen Catalog Number: AG12265	Calculated MW: 470 aa, 53 kDa	
	Observed MW: 48-53 kDa	

Applications

Tested Applications:
WB, Indirect ELISA

Species Specificity:
Human

Background Information

Metalloendopeptidase ADAM-Like Decysin 1 (ADAMDEC1) was first identified as a unique member of the matrix metalloprotease (ADAM) family. ADAMs are increasingly recognized as playing an important role in gut homeostasis and bowel inflammation. ADAMDEC1 is abundantly, and almost exclusively, expressed in the gastrointestinal (GI) tract.

Storage

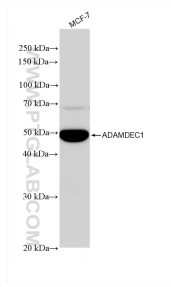
Storage:
Store at -80°C.

Storage Buffer:
PBS Only

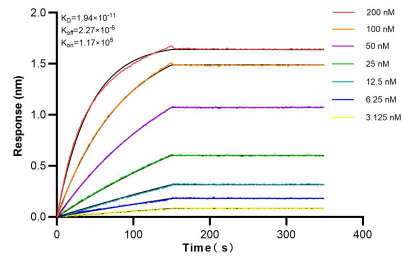
For technical support and original validation data for this product please contact:
T: 1 (888) 4PTGLAB (1-888-478-4522) (toll free in USA), or 1(312) 455-8498 (outside USA) E: proteintech@ptglab.com
W: ptglab.com

This product is exclusively available under Proteintech Group brand and is not available to purchase from any other manufacturer.

Selected Validation Data



MCF-7 cells were subjected to SDS PAGE followed by western blot with 82985-1-RR (ADAMDEC1 antibody) at dilution of 1:10000 incubated at room temperature for 1.5 hours. This data was developed using the same antibody clone with 82985-1-PBS in a different storage buffer formulation.



Biacore BLI kinetic assays of 82985-1-RR against Human ADAMDEC1 were performed. The affinity constant is 19.4 pM.