

For Research Use Only

MMP3 Recombinant antibody, PBS Only (Detector)



Catalog Number: 82984-2-PBS

Basic Information

Catalog Number: 82984-2-PBS	GenBank Accession Number: BC074815	Purification Method: Protein A purification
Size: 100ug , Concentration: 1mg/ml by Nanodrop;	GeneID (NCBI): 4314	CloneNo.: 230535B6
Source: Rabbit	UNIPROT ID: P08254	
Isotype: IgG	Full Name: matrix metallopeptidase 3 (stromelysin 1, progelatinase)	

Applications

Tested Applications:
Cytometric bead array, Sandwich ELISA, Indirect ELISA, Sample test

Species Specificity:
human

Product Information

82984-2-PBS targets MMP3 as part of a matched antibody pair:

MP00083-1: 82984-1-PBS capture and 82984-2-PBS detection (validated in Cytometric bead array)

MP00083-2: 82984-3-PBS capture and 82984-2-PBS detection (validated in Cytometric bead array, Sandwich ELISA)

Unconjugated rabbit recombinant monoclonal antibody in PBS only (BSA and azide free) storage buffer at a concentration of 1 mg/mL, ready for conjugation. Created using Proteintech's proprietary in-house recombinant technology. Recombinant production enables unrivalled batch-to-batch consistency, easy scale-up, and future security of supply.

This conjugation ready format makes antibodies ideal for use in many applications including: ELISAs, multiplex assays requiring matched pairs, mass cytometry, and multiplex imaging applications. Antibody use should be optimized by the end user for each application and assay.

Storage

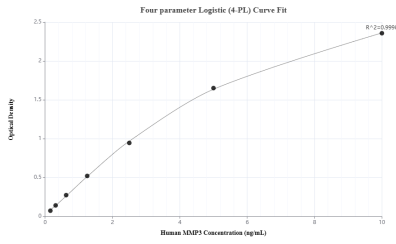
Storage:
Store at -80°C.

Storage Buffer:
100% PBS pH 7.3

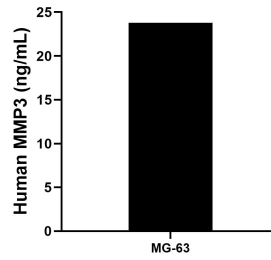
For technical support and original validation data for this product please contact:
T: 1 (888) 4PTGLAB (1-888-478-4522) (toll free in USA), or 1(312) 455-8498 (outside USA) E: proteintech@ptglab.com W: ptglab.com

This product is exclusively available under Proteintech Group brand and is not available to purchase from any other manufacturer.

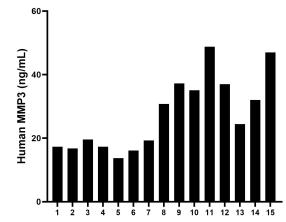
Selected Validation Data



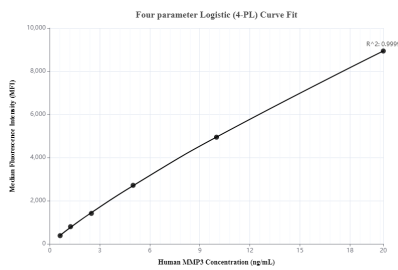
Sandwich ELISA standard curve of MP00083-2, Human MMP3 Recombinant Matched Antibody Pair - PBS only. 82984-3-PBS was coated to a plate as the capture antibody and incubated with serial dilutions of standard: Eg0382. 82984-2-PBS was HRP conjugated as the detection antibody. Range: 0.156-10 ng/mL.



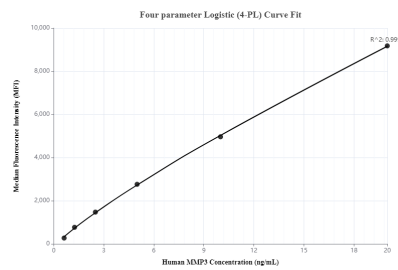
MG-63 were cultured in DMEM supplemented with 10% fetal bovine serum, 2.5 mM L-glutamine, 100 U/mL penicillin, and 100 µg/mL streptomycin sulfate. An aliquot of the cell culture supernate was removed, assayed for human MMP3, and measured 23.78 ng/mL.



Serum of fifteen individual healthy human donors was measured. The human MMP3 concentration of detected samples was determined to be 27.50 ng/mL with a range of 13.74 - 48.76 ng/mL.



Cytometric bead array standard curve of MP00083-1, MMP3 Recombinant Matched Antibody Pair, PBS Only. Capture antibody: 82984-1-PBS. Detection antibody: 82984-2-PBS. Standard: Eg0382. Range: 0.625-20 ng/mL.



Cytometric bead array standard curve of MP00083-2, MMP3 Recombinant Matched Antibody Pair, PBS Only. Capture antibody: 82984-3-PBS. Detection antibody: 82984-2-PBS. Standard: Eg0382. Range: 0.625-20 ng/mL.