

For Research Use Only

TMEM132E Recombinant antibody

Catalog Number: 82983-2-RR



Basic Information

Catalog Number: 82983-2-RR	GenBank Accession Number: NM_001304438	Purification Method: Protein A purification
Size: 100ul , Concentration: 1000 ug/ml by Nanodrop;	GeneID (NCBI): 124842	CloneNo.: 230525E12
Source: Rabbit	UNIPROT ID: Q6IEE7	Recommended Dilutions: WB 1:1000-1:4000
Isotype: IgG	Full Name: transmembrane protein 132E	
Immunogen Catalog Number: AG26772	Calculated MW: 116 kDa	
	Observed MW: 100-110 kDa	

Applications

Tested Applications: WB, ELISA	Positive Controls: WB : MCF-7 cells, mouse cerebellum tissue
Species Specificity: human, mouse	

Background Information

Transmembrane protein 132E (TMEM132E) is a member of the TMEM132 family which also include TMEM132A, TMEM132B, TMEM132C, TMEM132D (PMID: 29088312). The gene of TMEM132E is located within the DFNB99 locus on chromosome 17q12 and is highly expressed in the inner ear and other tissues including brain, kidney, lung, liver, spleen, heart, small intestine, colon, thymus, and stomach (PMID: 31656313). A variant of TMEM132E has been associated with autosomal-recessive nonsyndromic hearing loss DFNB99 (PMID: 25331638).

Storage

Storage:
Store at -20°C. Stable for one year after shipment.
Storage Buffer:
PBS with 0.02% sodium azide and 50% glycerol pH 7.3.
Aliquoting is unnecessary for -20°C storage

*** 20ul sizes contain 0.1% BSA

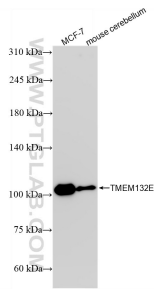
For technical support and original validation data for this product please contact:

T: 1 (888) 4PTGLAB (1-888-478-4522) (toll free in USA), or 1(312) 455-8498 (outside USA)

E: proteintech@ptglab.com
W: ptglab.com

This product is exclusively available under Proteintech Group brand and is not available to purchase from any other manufacturer.

Selected Validation Data



Various lysates were subjected to SDS PAGE followed by western blot with 82983-2-RR (TMEM132E antibody) at dilution of 1:2000 incubated at room temperature for 1.5 hours.

Biolayer interferometry (BLI) kinetic assays of 82983-2-RR against Human TMEM132E were performed. The affinity constant is 0.254 nM.