

For Research Use Only

# AFP Recombinant antibody, PBS Only

Catalog Number: 82982-6-PBS



## Basic Information

<b>Catalog Number:</b> 82982-6-PBS	<b>GenBank Accession Number:</b> BC027881	<b>Purification Method:</b> Protein A purification
<b>Size:</b> 100ug, Concentration: 1 mg/ml by Nanodrop;	<b>GeneID (NCBI):</b> 174	<b>CloneNo.:</b> 230435E3
<b>Source:</b> Rabbit	<b>UNIPROT ID:</b> P02771	
<b>Isotype:</b> IgG	<b>Full Name:</b> alpha-fetoprotein	
	<b>Calculated MW:</b> 69 kDa	
	<b>Observed MW:</b> 68 kDa	

## Applications

**Tested Applications:**  
WB, IHC, Indirect ELISA

**Species Specificity:**  
human

## Background Information

AFP (Alpha-fetoprotein) is a major plasma protein in the fetus and its concentration is very low in the adult (PMID:24120489). AFP can be detected at abnormally high concentrations in hepatocellular carcinomas as well as in the plasma and ascitic fluid of adults with hepatoma, indicating that AFP can serve as a tumor marker (PMID: 18669658). AFP is also a glycosylated protein and based on its binding capability to lectin Lens Culinaris Agglutinin (LCA), and total AFP can be separated into three different glycoforms, AFP-L1, AFP-L2, and AFP-L3. Core-fucosylated form of AFP (AFP-L3) is a more specific indicator than total AFP for HCC (PMID: 33128033, 35458505)

## Storage

**Storage:**  
Store at -80°C.

**Storage Buffer:**  
PBS Only

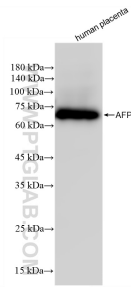
For technical support and original validation data for this product please contact:

T: 1 (888) 4PTGLAB (1-888-478-4522) (toll free in USA), or 1(312) 455-8498 (outside USA)

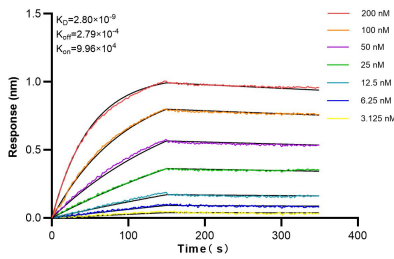
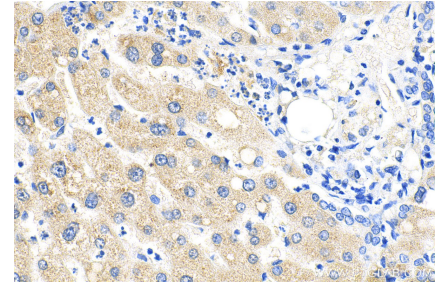
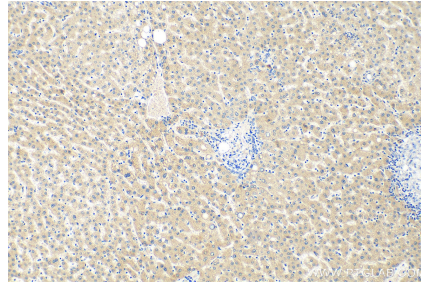
E: [proteintech@ptglab.com](mailto:proteintech@ptglab.com)  
W: [ptglab.com](http://ptglab.com)

**This product is exclusively available under Proteintech Group brand and is not available to purchase from any other manufacturer.**

## Selected Validation Data



human placenta tissue were subjected to SDS PAGE followed by western blot with 82982-6-RR (AFP antibody) at dilution of 1:10000 incubated at room temperature for 1.5 hours. This data was developed using the same antibody clone with 82982-6-PBS in a different storage buffer formulation.



Biolayer interferometry (BLI) kinetic assays of 82982-6-RR against Human AFP were performed. The affinity constant is 2.80 nM.