

For Research Use Only

AFP Recombinant antibody, PBS Only (Capture/Detector)

Catalog Number: 82982-4-PBS



Basic Information

Catalog Number:

82982-4-PBS

Size:

100ug, Concentration: 1mg/ml by
Nanodrop;

Source:

Rabbit

Isotype:

IgG

GenBank Accession Number:

BC027881

GeneID (NCBI):

174

UNIPROT ID:

P02771

Full Name:

alpha-fetoprotein

Calculated MW:

69 kDa

Purification Method:

Protein A purification

CloneNo.:

230435A11

Applications

Tested Applications:

Cytometric bead array, Sandwich ELISA, Indirect ELISA,
Sample test

Species Specificity:

human

Product Information

82982-4-PBS targets AFP as part of a matched antibody pair:

MP00001-3: 82982-4-PBS capture and 82982-2-PBS detection (validated in Cytometric bead array)

MP00001-4: 82982-3-PBS capture and 82982-4-PBS detection (validated in Sandwich ELISA)

Unconjugated rabbit recombinant monoclonal antibody in PBS only (BSA and azide free) storage buffer at a concentration of 1 mg/mL, ready for conjugation. Created using Proteintech's proprietary in-house recombinant technology. Recombinant production enables unrivalled batch-to-batch consistency, easy scale-up, and future security of supply.

This conjugation ready format makes antibodies ideal for use in many applications including: ELISAs, multiplex assays requiring matched pairs, mass cytometry, and multiplex imaging applications. Antibody use should be optimized by the end user for each application and assay.

Storage

Storage:

Store at -80°C.

Storage Buffer:

100% PBS pH 7.3

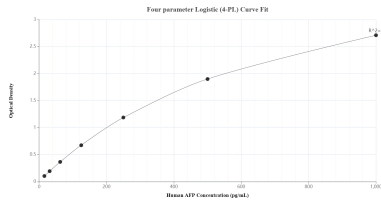
For technical support and original validation data for this product please contact:

T: 1 (888) 4PTGLAB (1-888-478-4522) (toll free
in USA), or 1(312) 455-8498 (outside USA)

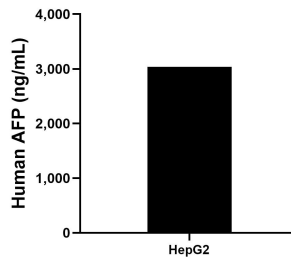
E: proteintech@ptglab.com
W: ptglab.com

This product is exclusively available under Proteintech Group brand and is not available to purchase from any other manufacturer.

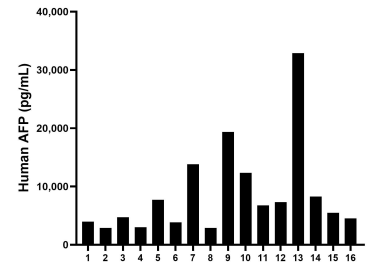
Selected Validation Data



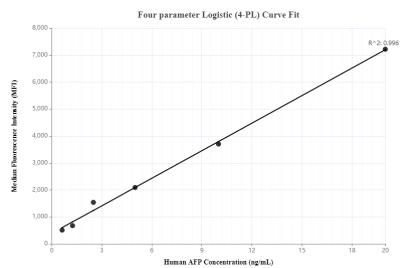
Sandwich ELISA standard curve of MP00001-4, AFP Recombinant Matched Antibody Pair - PBS only. 82982-3-PBS was coated to a plate as the capture antibody and incubated with serial dilutions of standard Eg0539. 82982-4-PBS was HRP conjugated as the detection antibody. Range: 15.6-1000 pg/mL



HepG2 (human hepatocellular carcinoma cells) were cultured in DMEM supplemented with 10% fetal bovine serum, 2.5 mM L-glutamine, 100 U/mL penicillin, and 100 µg/mL streptomycin sulfate. The mean AFP concentration was determined to be 3,038.3 ng/mL in HepG2 supernatant.



Serum of sixteen individual healthy human donors was measured. The AFP concentration of detected samples was determined to be 8,740.7 pg/mL with a range of 2,872.1 - 32,900 pg/mL



Cytometric bead array standard curve of MP00001-3, AFP Recombinant Matched Antibody Pair, PBS Only. Capture antibody: 82982-4-PBS. Detection antibody: 82982-2-PBS. Standard: Eg0539. Range: 0.625-20 ng/mL