

For Research Use Only

OGDHL Recombinant antibody, PBS Only

Catalog Number: 82981-1-PBS



Basic Information

| | | |
|-----------------------------------------------------------|------------------------------------------------------|-------------------------------------------------------|
| Catalog Number: 82981-1-PBS | GenBank Accession Number: BC026320 | Purification Method: Protein A purification |
| Size: 100ug, Concentration: 1mg/ml by Nanodrop; | GeneID (NCBI): 55753 | CloneNo.: 230228B2 |
| Source: Rabbit | UNIPROT ID: Q9ULDO | |
| Isotype: IgG | Full Name: oxoglutarate dehydrogenase-like | |
| Immunogen Catalog Number: AG10794 | Calculated MW: 1010 aa, 115 kDa | |

Applications

Tested Applications:
IHC, FC (Intra), Indirect ELISA

Species Specificity:
human

Background Information

OGDHL(oxoglutarate dehydrogenase-like) is also named as KGDE1KL, FLJ10851, KIAA1290 and belongs to the alpha-ketoglutarate dehydrogenase family. OGDHL is one of the rate-limiting component of the multienzyme OGDH complex (OGDHC) whose malfunction is associated with neuro-degeneration and it is localized only in the mitochondrial fraction and not in the cytosolic or nuclear fractions(PMID:23152800). OGDHL negatively regulates cell proliferation by inducing apoptosis in cervical cancer cells. It may thus participate in brain-specific control of 2-oxoglutarate distribution between energy production and synthesis of the neurotransmitter glutamate(PMID:18783430). It has 3 isoforms(114 kDa, 108 kDa, 91 kDa) produced by alternative splicing.

Storage

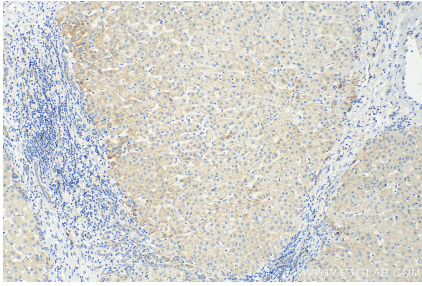
Storage:
Store at -80°C.

Storage Buffer:
PBS Only

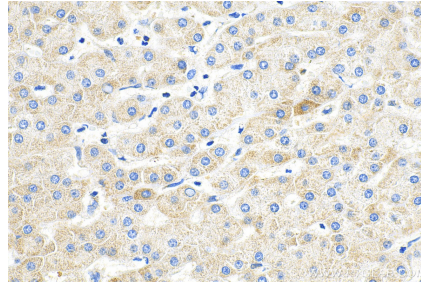
For technical support and original validation data for this product please contact:
T: 1 (888) 4PTGLAB (1-888-478-4522) (toll free in USA), or 1(312) 455-8498 (outside USA) E: proteintech@ptglab.com
W: ptglab.com

This product is exclusively available under Proteintech Group brand and is not available to purchase from any other manufacturer.

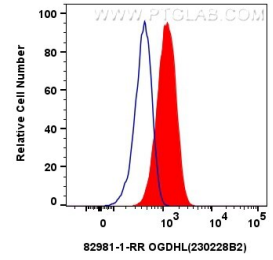
Selected Validation Data



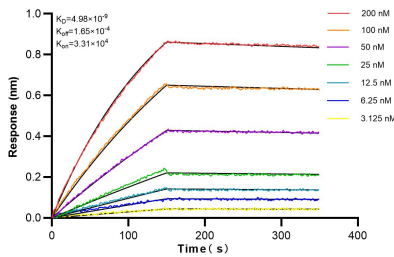
Immunohistochemical analysis of paraffin-embedded human liver tissue slide using 82981-1-RR (OGDHL antibody) at dilution of 1:400 (under 10x lens). Heat mediated antigen retrieval with Tris-EDTA buffer (pH 9.0). This data was developed using the same antibody clone with 82981-1-PBS in a different storage buffer formulation.



Immunohistochemical analysis of paraffin-embedded human liver tissue slide using 82981-1-RR (OGDHL antibody) at dilution of 1:400 (under 40x lens). Heat mediated antigen retrieval with Tris-EDTA buffer (pH 9.0). This data was developed using the same antibody clone with 82981-1-PBS in a different storage buffer formulation.



1×10^6 Caco-2 cells were intracellularly stained with 0.25 ug OGDHL Recombinant antibody (82981-1-RR, Clone:230228B2) and CoraLite®488-Conjugated AffiniPure Goat Anti-Rabbit IgG(H+L) (SA00013-2)(red), or 0.25 ug Rabbit IgG control Rabbit PolyAb (30000-0-AP) (blue). Cells were fixed with 4% PFA and permeabilized with Flow Cytometry Perm Buffer (PF00011-C). This data was developed using the same antibody clone with 82981-1-PBS in a



Biolayer interferometry (BLI) kinetic assays of 82981-1-RR against Human OGDHL were performed. The affinity constant is 4.98 nM.