

For Research Use Only

# Cytokeratin 1-specific Recombinant antibody

Catalog Number:82972-1-RR



## Basic Information

<b>Catalog Number:</b> 82972-1-RR	<b>GenBank Accession Number:</b> NM_006121	<b>Purification Method:</b> Protein A purification
<b>Size:</b> 100ul , Concentration: 1000 µg/ml by Nanodrop;	<b>GeneID (NCBI):</b> 3848	<b>CloneNo.:</b> 230261F9
<b>Source:</b> Rabbit	<b>UNIPROT ID:</b> P04264	<b>Recommended Dilutions:</b> WB 1:5000-1:50000
<b>Isotype:</b> IgG	<b>Full Name:</b> keratin 1	
	<b>Calculated MW:</b> 66 kDa	
	<b>Observed MW:</b> 67 kDa	

## Applications

<b>Tested Applications:</b> WB, FC (Intra), ELISA	<b>Positive Controls:</b> WB : mouse skin tissue, rat skin tissue
<b>Species Specificity:</b> human, mouse, rat	

## Background Information

Keratins are a large family of proteins that form the intermediate filament cytoskeleton of epithelial cells, which are classified into two major sequence types. Type I keratins are a group of acidic intermediate filament proteins, including K9-K23, and the hair keratins Ha1-Ha8. Type II keratins are the basic or neutral counterparts to the acidic type I keratins, including K1-K8, and the hair keratins, Hb1-Hb6. Keratin-1 is type II keratin. It is a specific marker for terminal differentiation in mammalian epidermis. It is specifically expressed in the spinous and granular layers of the epidermis with family member KRT10 and mutations in these genes have been associated with bullous congenital ichthyosiform erythroderma.

## Storage

**Storage:**  
Store at -20°C. Stable for one year after shipment.  
**Storage Buffer:**  
PBS with 0.02% sodium azide and 50% glycerol pH 7.3.  
Aliquoting is unnecessary for -20°C storage

\*\*\* 20ul sizes contain 0.1% BSA

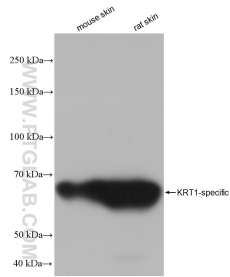
For technical support and original validation data for this product please contact:

T: 1 (888) 4PTGLAB (1-888-478-4522) (toll free in USA), or 1(312) 455-8498 (outside USA)

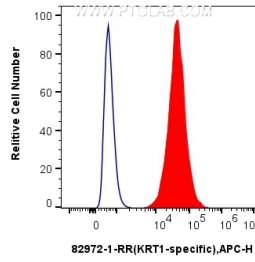
E: [proteintech@ptglab.com](mailto:proteintech@ptglab.com)  
W: [ptglab.com](http://ptglab.com)

This product is exclusively available under Proteintech Group brand and is not available to purchase from any other manufacturer.

## Selected Validation Data



Various lysates were subjected to SDS PAGE followed by western blot with 82972-1-RR (KRT1-specific antibody) at dilution of 1:40000 incubated at room temperature for 1.5 hours.



$1 \times 10^6$  A431 cells were intracellularly stained with 0.25  $\mu$ g Anti-Human KRT1-specific (82972-1-RR, Clone:230261F9) and APC-Conjugated Goat Anti-Rabbit IgG(H+L)(red), or 0.25  $\mu$ g Rabbit IgG control Rabbit PolyAb (30000-0-AP)(blue). Cells were fixed with 4% PFA and permeabilized with Flow Cytometry Perm Buffer (PF00011-C).