

For Research Use Only

# CPO Recombinant antibody

Catalog Number: 82952-2-RR



## Basic Information

<b>Catalog Number:</b> 82952-2-RR	<b>GenBank Accession Number:</b> BC112078	<b>Purification Method:</b> Protein A purification
<b>Size:</b> 100ul , Concentration: 1000 ug/ml by Nanodrop;	<b>GeneID (NCBI):</b> 130749	<b>CloneNo.:</b> 230153F4
<b>Source:</b> Rabbit	<b>UNIPROT ID:</b> Q8IVL8	<b>Recommended Dilutions:</b> WB 1:5000-1:50000
<b>Isotype:</b> IgG	<b>Full Name:</b> carboxypeptidase O	
<b>Immunogen Catalog Number:</b> AG24059	<b>Calculated MW:</b> 374 aa, 43 kDa	
	<b>Observed MW:</b> 45 kDa	

## Applications

<b>Tested Applications:</b> WB, FC (Intra), ELISA	<b>Positive Controls:</b> WB : HeLa cells,
<b>Species Specificity:</b> human	

## Storage

**Storage:**  
Store at -20°C. Stable for one year after shipment.  
**Storage Buffer:**  
PBS with 0.02% sodium azide and 50% glycerol pH 7.3.  
Aliquoting is unnecessary for -20°C storage

\*\*\* 20ul sizes contain 0.1% BSA

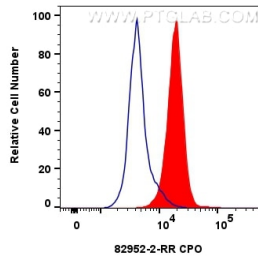
For technical support and original validation data for this product please contact:

T: 1 (888) 4PTGLAB (1-888-478-4522) (toll free  
in USA), or 1(312) 455-8498 (outside USA)

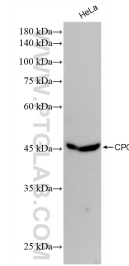
E: [proteintech@ptglab.com](mailto:proteintech@ptglab.com)  
W: [ptglab.com](http://ptglab.com)

This product is exclusively available under Proteintech Group brand and is not available to purchase from any other manufacturer.

## Selected Validation Data



1x10<sup>6</sup> HepG2 cells were intracellularly stained with 0.25 ug CPO Recombinant antibody (82952-2-RR, Clone:230153F4) and CoraLite®488-Conjugated Goat Anti-Rabbit IgG(H+L) (SA00013-2) (red), or 0.25 ug Rabbit IgG control Rabbit PolyAb (30000-0-AP) (blue). Cells were fixed with 4% PFA and permeabilized with Flow Cytometry Perm Buffer (PF00011-C).



HeLa cells were subjected to SDS PAGE followed by western blot with 82952-2-RR (CPO antibody) at dilution of 1:10000 incubated at room temperature for 1.5 hours.