

For Research Use Only

EFNA2 Recombinant antibody, PBS Only



Catalog Number: 82951-1-PBS

Basic Information

Catalog Number: 82951-1-PBS	GenBank Accession Number: NM_001405	Purification Method: Protein A purification
Size: 100ug, Concentration: 1 mg/ml by Nanodrop;	GeneID (NCBI): 1943	CloneNo.: 230251D8
Source: Rabbit	UNIPROT ID: O43921	
Isotype: IgG	Full Name: ephrin-A2	
	Calculated MW: 213 aa, 24 kDa	

Applications

Tested Applications:
IF, Indirect ELISA

Species Specificity:
Human

Background Information

Ephrin A2, also known as ELF1, Cek7L, and LERK6, is a member of the ephrin ligand family, which binds members of the Eph receptor family. The Eph family members are involved in central nervous system function and in development. The predicted 213-amino acid EFNA2 protein is composed of a signal sequence, a receptor-binding region, a spacer region, and a hydrophobic region. EFNA2 binds to the receptor tyrosine kinases EPHA3, EPHA4 and EPHA5.

Storage

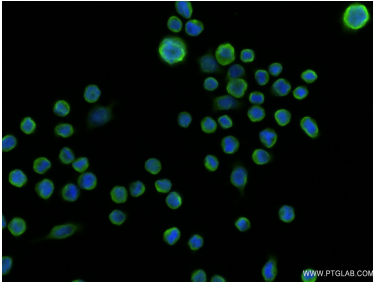
Storage:
Store at -80°C.

Storage Buffer:
PBS Only

For technical support and original validation data for this product please contact:
T: 1 (888) 4PTGLAB (1-888-478-4522) (toll free in USA), or 1(312) 455-8498 (outside USA) E: proteintech@ptglab.com
W: ptglab.com

This product is exclusively available under Proteintech Group brand and is not available to purchase from any other manufacturer.

Selected Validation Data



Immunofluorescent analysis of (4% PFA) fixed COLO 205 cells using EFNA2 antibody (82951-1-RR, Clone: 230251D8) at dilution of 1:200 and CoraLite®488-Conjugated AffiniPure Goat Anti-Rabbit IgG(H+L) (SA00013-2). This data was developed using the same antibody clone with 82951-1-PBS in a different storage buffer formulation.