

For Research Use Only

IFT140 Recombinant antibody

Catalog Number: 82947-7-RR



Basic Information

Catalog Number: 82947-7-RR	GenBank Accession Number: BC035577	Purification Method: Protein A purification
Size: 100ul , Concentration: 1000 µg/ml by Nanodrop;	GeneID (NCBI): 9742	CloneNo.: 230231D5
Source: Rabbit	UNIPROT ID: Q96RY7	Recommended Dilutions: WB 1:5000-1:50000 IF/ICC 1:200-1:800
Isotype: IgG	Full Name: intraflagellar transport 140 homolog (Chlamydomonas)	
Immunogen Catalog Number: AG11119	Calculated MW: 1462 aa, 165 kDa	
	Observed MW: 150-165 kDa	

Applications

Tested Applications: WB, ELISA, IF/ICC	Positive Controls:
Species Specificity: Human	WB : HeLa cells, HepG2 cells IF/ICC : Starvation treated hTERT-RPE1 cells,

Background Information

IFT140 is a subunit of intraflagellar transport complex A (IFT-A) which is involved in retrograde ciliary transport. RT-PCR analysis showed it is highly expressed in kidney, moderately in ovary, testis, prostate, and lung. IFT140 is localized to the base and tip of primary cilium. IFT140 has a pivotal role in development and function of ciliated cells, and mutations of IFT140 cause skeletal, renal, and retinal ciliopathies. It had been detected as a single band around 140-165 kDa in different reports (PMID: 20368623, 22282595).

Storage

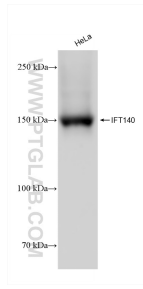
Storage:
Store at -20°C. Stable for one year after shipment.
Storage Buffer:
PBS with 0.02% sodium azide and 50% glycerol pH 7.3.
Aliquoting is unnecessary for -20°C storage

*** 20ul sizes contain 0.1% BSA

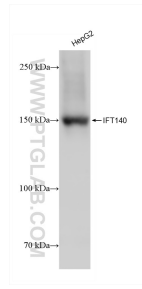
For technical support and original validation data for this product please contact:
T: 1 (888) 4PTGLAB (1-888-478-4522) (toll free in USA), or 1(312) 455-8498 (outside USA)
E: proteintech@ptglab.com
W: ptglab.com

This product is exclusively available under Proteintech Group brand and is not available to purchase from any other manufacturer.

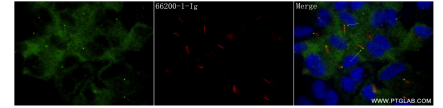
Selected Validation Data



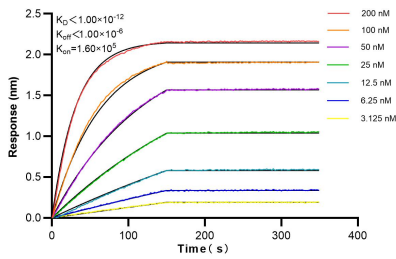
HeLa cells were subjected to SDS PAGE followed by western blot with 82947-7-RR (IFT140 antibody) at dilution of 1:10000 incubated at room temperature for 1.5 hours.



HepG2 cells were subjected to SDS PAGE followed by western blot with 82947-7-RR (IFT140 antibody) at dilution of 1:10000 incubated at room temperature for 1.5 hours.



Immunofluorescent analysis of (4% PFA) fixed Starvation treated hTERT-RPE1 cells using IFT140 antibody (82947-7-RR, Clone: 230231D5) at dilution of 1:400 and CoraLite@488-Conjugated AffiniPure Goat Anti-Rabbit IgG(H+L) (SA00013-2), Acetyl-Tubulin (Lys40) antibody (66200-1-Ig, Clone: 7E5H8, red).



Biolayer interferometry (BLI) kinetic assays of 82947-7-RR against Human IFT140 were performed. The affinity constant is below 1 pM.