

For Research Use Only

# DGAT1 Recombinant antibody

Catalog Number: 82945-1-RR

Featured Product

2 Publications



## Basic Information

Catalog Number:

82945-1-RR

Size:

100ul , Concentration: 1000 ug/ml by Nanodrop;

Source:

Rabbit

Isotype:

IgG

Immunogen Catalog Number:

AG32717

GenBank Accession Number:

BC015762

GeneID (NCBI):

8694

UNIPROT ID:

O75907

Full Name:

diacylglycerol O-acyltransferase homolog 1 (mouse)

Calculated MW:

488 aa, 55 kDa

Observed MW:

45-55 kDa

Purification Method:

Protein A purification

CloneNo.:

230091E1

Recommended Dilutions:

WB 1:2000-1:10000

## Applications

Tested Applications:

WB, ELISA

Cited Applications:

WB

Species Specificity:

Human, mouse, rat

Cited Species:

mouse

Positive Controls:

WB : HeLa cells, mouse liver tissue, HepG2 cells, PC-3 cells, THP-1 cells, Caco-2 cells, rat liver tissue

## Notable Publications

Author	Pubmed ID	Journal	Application
Jinwei Han	39862790	Phytomedicine	WB
Wei Chen	39549860	Biochim Biophys Acta Mol Cell Biol Lipids	WB

## Storage

Storage:

Store at -20°C. Stable for one year after shipment.

Storage Buffer:

PBS with 0.02% sodium azide and 50% glycerol, pH7.3

Aliquoting is unnecessary for -20°C storage

\*\*\* 20ul sizes contain 0.1% BSA

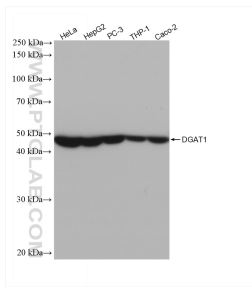
For technical support and original validation data for this product please contact:

T: 1 (888) 4PTGLAB (1-888-478-4522) (toll free in USA), or 1(312) 455-8498 (outside USA)

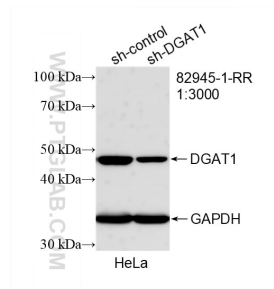
E: [proteintech@ptglab.com](mailto:proteintech@ptglab.com)  
W: [ptglab.com](http://ptglab.com)

This product is exclusively available under Proteintech Group brand and is not available to purchase from any other manufacturer.

## Selected Validation Data



Various lysates were subjected to SDS PAGE followed by western blot with 82945-1-RR (DGAT1 antibody) at dilution of 1:5000 incubated at room temperature for 1.5 hours.



WB result of DGAT1 antibody (82945-1-RR; 1:3000; incubated at room temperature for 1.5 hours) with sh-Control and sh-DGAT1 transfected HeLa cells.