

For Research Use Only

# CCR5 Recombinant antibody, PBS Only (Capture)

Catalog Number: 82942-2-PBS



## Basic Information

<b>Catalog Number:</b> 82942-2-PBS	<b>GenBank Accession Number:</b> BC038398	<b>Purification Method:</b> Protein A purification
<b>Size:</b> 100ug, Concentration: 1mg/ml by Nanodrop;	<b>GeneID (NCBI):</b> 1234	<b>CloneNo.:</b> 230266A9
<b>Source:</b> Rabbit	<b>UNIPROT ID:</b> P51681	
<b>Isotype:</b> IgG	<b>Full Name:</b> chemokine (C-C motif) receptor 5	
<b>Immunogen Catalog Number:</b> AG11493	<b>Calculated MW:</b> 352 aa, 41 kDa	

## Applications

**Tested Applications:**  
Cytometric bead array, Sandwich ELISA, Indirect ELISA, Sample test

**Species Specificity:**  
human

## Product Information

82942-2-PBS targets CCR5 as part of a matched antibody pair:

MP00125-2: 82942-2-PBS capture and 82942-4-PBS detection (validated in Cytometric bead array)

MP00125-3: 82942-2-PBS capture and 82942-3-PBS detection (validated in Cytometric bead array)

MP00125-4: 82942-2-PBS capture and 82942-6-PBS detection (validated in Sandwich ELISA)

Unconjugated rabbit recombinant monoclonal antibody in PBS only (BSA and azide free) storage buffer at a concentration of 1 mg/mL, ready for conjugation. Created using Proteintech's proprietary in-house recombinant technology. Recombinant production enables unrivalled batch-to-batch consistency, easy scale-up, and future security of supply.

This conjugation ready format makes antibodies ideal for use in many applications including: ELISAs, multiplex assays requiring matched pairs, mass cytometry, and multiplex imaging applications. Antibody use should be optimized by the end user for each application and assay.

## Storage

**Storage:**  
Store at -80°C.  
**Storage Buffer:**  
100% PBS pH 7.3

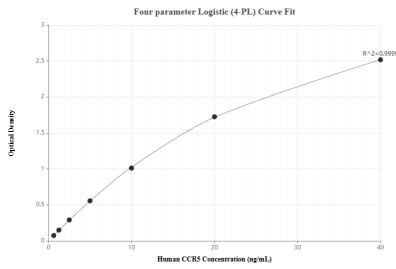
For technical support and original validation data for this product please contact:

T: 1 (888) 4PTGLAB (1-888-478-4522) (toll free in USA), or 1(312) 455-8498 (outside USA)

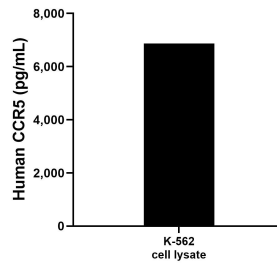
E: [proteintech@ptglab.com](mailto:proteintech@ptglab.com)  
W: [ptglab.com](http://ptglab.com)

**This product is exclusively available under Proteintech Group brand and is not available to purchase from any other manufacturer.**

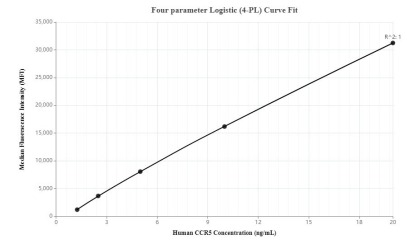
## Selected Validation Data



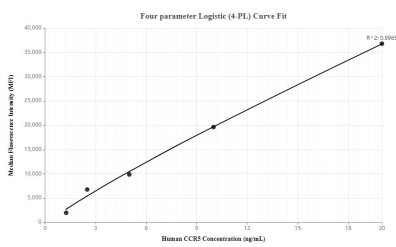
Sandwich ELISA standard curve of MP00125-4, Human CCR5 Recombinant Matched Antibody Pair - PBS Only. 82942-2-PBS was coated to a plate as the capture antibody and incubated with serial dilutions of standard Ag11493. 82942-6-PBS was HRP conjugated as the detection antibody. Range: 0.625-40 ng/mL



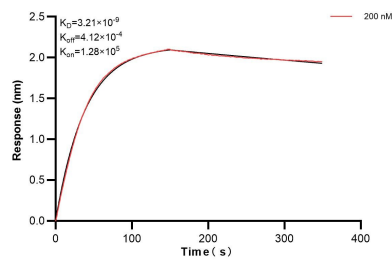
K-562 cell lysate was measured. The human CCR5 concentration of detected samples was determined to be 6,872.7 pg/mL (based on a 2.1 mg/mL extract load) in K-562 cell lysate.



Cytometric bead array standard curve of MP00125-2, CCR5 Recombinant Matched Antibody Pair, PBS Only. Capture antibody: 82942-2-PBS. Detection antibody: 82942-4-PBS. Standard: Ag11493. Range: 1.25-20 ng/mL



Cytometric bead array standard curve of MP00125-3, CCR5 Recombinant Matched Antibody Pair, PBS Only. Capture antibody: 82942-3-PBS. Detection antibody: 82942-3-PBS. Standard: Ag11493. Range: 1.25-20 ng/mL



Biolayer interferometry (BLI) kinetic assay of 82942-2-PBS against Human CCR5 was performed. The affinity constant is 3.21 nM.