

For Research Use Only

# CAMP Recombinant antibody, PBS Only

Catalog Number: 82940-2-PBS



## Basic Information

<b>Catalog Number:</b> 82940-2-PBS	<b>GenBank Accession Number:</b> BC055089	<b>Purification Method:</b> Protein A purification
<b>Size:</b> 100ug, Concentration: 1 mg/ml by Nanodrop;	<b>GeneID (NCBI):</b> 820	<b>CloneNo.:</b> 230157C6
<b>Source:</b> Rabbit	<b>UNIPROT ID:</b> P49913	
<b>Isotype:</b> IgG	<b>Full Name:</b> cathelicidin antimicrobial peptide	
<b>Immunogen Catalog Number:</b> AG2622	<b>Calculated MW:</b> 170 aa, 19 kDa	

## Applications

**Tested Applications:**  
FC (Intra), Indirect ELISA

**Species Specificity:**  
human

## Background Information

CAMP is a member of an antimicrobial peptide family, characterized by a highly conserved N-terminal signal peptide containing a cathelin domain and a structurally variable cationic antimicrobial peptide, which is produced by extracellular proteolysis from the C-terminus. In addition to its antibacterial, antifungal, and antiviral activities, the encoded protein functions in cell chemotaxis, immune mediator induction, and inflammatory response regulation. CAMP encodes the 18-kDa proprotein hCAP18. FALL-39 and LL-37 are the mature cathelicidin peptides. This antibody can recognize all the proprotein and cleaved species.

## Storage

**Storage:**  
Store at -80°C.

**Storage Buffer:**  
PBS Only

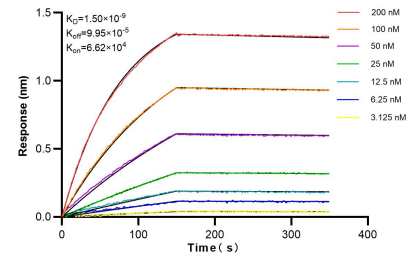
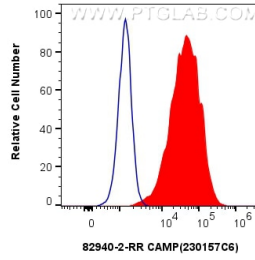
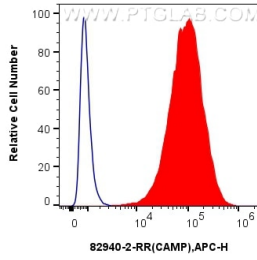
For technical support and original validation data for this product please contact:

T: 1 (888) 4PTGLAB (1-888-478-4522) (toll free in USA), or 1(312) 455-8498 (outside USA)

E: [proteintech@ptglab.com](mailto:proteintech@ptglab.com)  
W: [ptglab.com](http://ptglab.com)

**This product is exclusively available under Proteintech Group brand and is not available to purchase from any other manufacturer.**

## Selected Validation Data



1x10<sup>6</sup> MCF-7 cells were intracellularly stained with 0.25 ug Anti-Human CAMP (82940-2-RR, Clone:230157C6) and APC-Conjugated AffiniPure Goat Anti-Rabbit IgG(H+L) at dilution 1:1000(red), or 0.25 ug Rabbit IgG control Rabbit PolyAb (30000-0-AP) (blue). Cells were fixed with 4% PFA and permeabilized with Flow Cytometry Perm Buffer (PF00011-C). This data was developed using the same antibody clone with 82940-2-PBS in a different storage buffer formulation.



(blue)1x10<sup>6</sup> Hela cells were intracellularly stained with 0.25 ug Anti-Human CAMP (82940-2-RR, Clone:230157C6) and APC-Conjugated AffiniPure Goat Anti-Rabbit IgG(H+L) at dilution (red), or 0.25 ug Isotype Control. Cells were fixed with 4% PFA and permeabilized with Flow Cytometry Perm Buffer (PF00011-C). This data was developed using the same antibody clone with 82940-2-PBS in a different storage buffer formulation.

Bi-layer interferometry (BLI) kinetic assays of 82940-2-RR against Human CAMP were performed. The affinity constant is 1.50 nM.