

For Research Use Only

# CUX2 Recombinant antibody

Catalog Number: 82933-1-RR

Featured Product



## Basic Information

|  |  |  |
|--|--|--|
| <b>Catalog Number:</b><br>82933-1-RR                           | <b>GenBank Accession Number:</b><br>BC151245 | <b>Purification Method:</b><br>Protein A purification                    |
| <b>Size:</b><br>100ul , Concentration: 1000 ug/ml by Nanodrop; | <b>GeneID (NCBI):</b><br>23316               | <b>CloneNo.:</b><br>230235G1   |
| <b>Source:</b><br>Rabbit                                       | <b>UNIPROT ID:</b><br>O14529                 | <b>Recommended Dilutions:</b><br>WB 1:2000-1:10000<br>IF/ICC 1:150-1:600 |
| <b>Isotype:</b><br>IgG   | <b>Full Name:</b><br>cut-like homeobox 2     |  |
| <b>Immunogen Catalog Number:</b><br>AG18809                    | <b>Calculated MW:</b><br>1486 aa, 162 kDa    |  |
|  | <b>Observed MW:</b><br>162 kDa               |  |

## Applications

|  |   |
|--|---|
| <b>Tested Applications:</b><br>WB, IF/ICC, ELISA | <b>Positive Controls:</b><br>WB : K-562 cells, SH-SY5Y cells, HepG2 cells |
| <b>Species Specificity:</b><br>human             | <b>IF/ICC :</b> HeLa cells,   |

## Background Information

Cut like homeobox 2 (CUX2) also named as, CDP2 or CUTL2, is a 1486 amino acid protein, which contains one homeobox DNA-binding domain and three CUT DNA-binding domains. CUX2 localizes in the nucleus and belongs to the CUT homeobox family. CUX2 may as a transcription factor be involved in neural specification.

## Storage

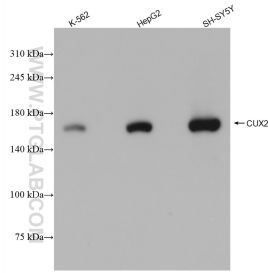
**Storage:**  
Store at -20°C. Stable for one year after shipment.  
**Storage Buffer:**  
PBS with 0.02% sodium azide and 50% glycerol pH 7.3.  
Aliquoting is unnecessary for -20°C storage

\*\*\* 20ul sizes contain 0.1% BSA

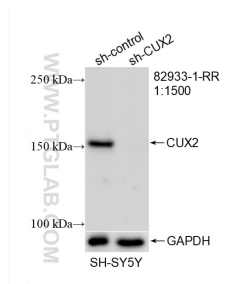
For technical support and original validation data for this product please contact:  
T: 1 (888) 4PTGLAB (1-888-478-4522) (toll free in USA), or 1(312) 455-8498 (outside USA)  
E: proteintech@ptglab.com  
W: ptglab.com

This product is exclusively available under Proteintech Group brand and is not available to purchase from any other manufacturer.

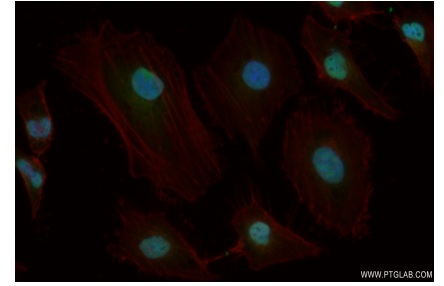
## Selected Validation Data



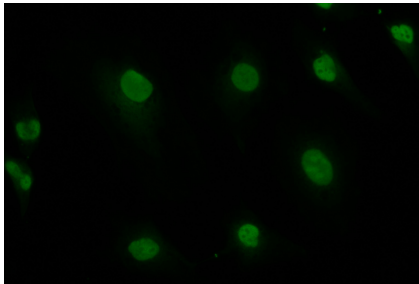
Various lysates were subjected to SDS PAGE followed by western blot with 82933-1-RR (CUX2 antibody) at dilution of 1:5000 incubated at room temperature for 1.5 hours.



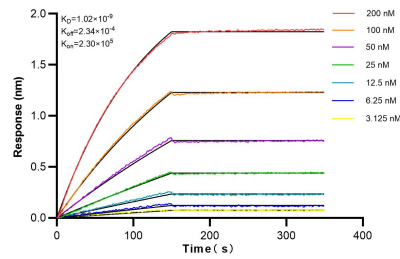
WB result of CUX2 antibody (82933-1-RR; 1:1500; incubated at room temperature for 1.5 hours) with sh-Control and sh-CUX2 transfected SH-SY5Y cells.



Immunofluorescent analysis of (4% PFA) fixed HeLa cells using CUX2 antibody (82933-1-RR, Clone: 230235G1) at dilution of 1:300 and CoraLite®488-Conjugated AffiniPure Goat Anti-Rabbit IgG(H+L).



Immunofluorescent analysis of (4% PFA) fixed HeLa cells using CUX2 antibody (82933-1-RR, Clone: 230235G1) at dilution of 1:300 and CoraLite®488-Conjugated AffiniPure Goat Anti-Rabbit IgG(H+L).



Biolayer interferometry (BLI) kinetic assays of 82933-1-RR against Human CUX2 were performed. The affinity constant is 1.02 nM.