

For Research Use Only

# CUX2 Recombinant antibody, PBS Only



Catalog Number: 82933-1-PBS

## Basic Information

<b>Catalog Number:</b> 82933-1-PBS	<b>GenBank Accession Number:</b> BC151245	<b>Purification Method:</b> Protein A purification
<b>Size:</b> 100ug , Concentration: 1mg/ml by Nanodrop;	<b>GeneID (NCBI):</b> 23316	<b>CloneNo.:</b> 230235G1
<b>Source:</b> Rabbit	<b>UNIPROT ID:</b> O14529	
<b>Isotype:</b> IgG	<b>Full Name:</b> cut-like homeobox 2	
<b>Immunogen Catalog Number:</b> AG18809	<b>Calculated MW:</b> 1486 aa, 162 kDa	
	<b>Observed MW:</b> 162 kDa	

## Applications

**Tested Applications:**  
WB, IF, Indirect ELISA

**Species Specificity:**  
Human

## Background Information

Cut like homeobox 2 (CUX2) also named as, CDP2 or CUTL2, is a 1486 amino acid protein, which contains one homeobox DNA-binding domain and three CUT DNA-binding domains. CUX2 localizes in the nucleus and belongs to the CUT homeobox family. CUX2 may as a transcription factor be involved in neural specification.

## Storage

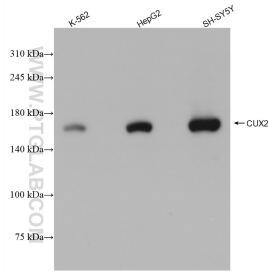
**Storage:**  
Store at -80°C.

**Storage Buffer:**  
PBS Only

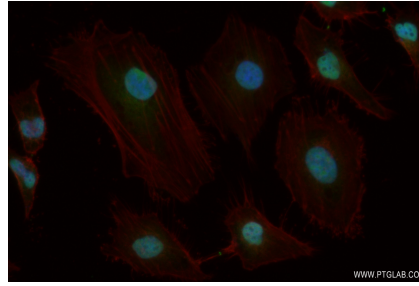
For technical support and original validation data for this product please contact:  
T: 1 (888) 4PTGLAB (1-888-478-4522) (toll free in USA), or 1(312) 455-8498 (outside USA)      E: proteintech@ptglab.com  
W: ptglab.com

This product is exclusively available under Proteintech Group brand and is not available to purchase from any other manufacturer.

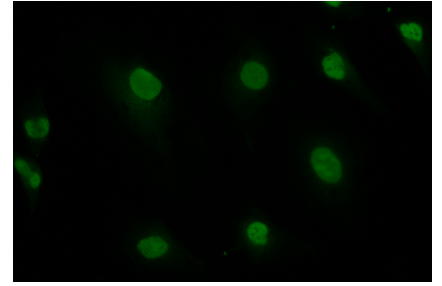
## Selected Validation Data



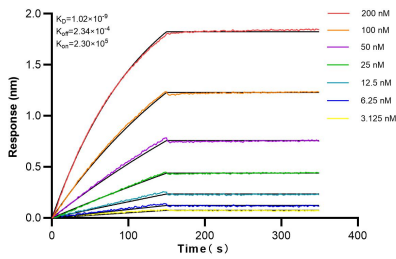
Various lysates were subjected to SDS PAGE followed by western blot with 82933-1-RR (CUX2 antibody) at dilution of 1:5000 incubated at room temperature for 1.5 hours. This data was developed using the same antibody clone with 82933-1-PBS in a different storage buffer formulation.



Immunofluorescent analysis of (4% PFA) fixed HeLa cells using CUX2 antibody (82933-1-RR, Clone: 230235G1) at dilution of 1:300 and CoraLite®488-Conjugated AffiniPure Goat Anti-Rabbit IgG(H+L). This data was developed using the same antibody clone with 82933-1-PBS in a different storage buffer formulation.



Immunofluorescent analysis of (4% PFA) fixed HeLa cells using CUX2 antibody (82933-1-RR, Clone: 230235G1) at dilution of 1:300 and CoraLite®488-Conjugated AffiniPure Goat Anti-Rabbit IgG(H+L). This data was developed using the same antibody clone with 82933-1-PBS in a different storage buffer formulation.



Bi-layer interferometry (BLI) kinetic assays of 82933-1-RR against Human CUX2 were performed. The affinity constant is 1.02 nM.