

For Research Use Only

HLA-DMB Recombinant antibody, PBS Only

Catalog Number: 82922-1-PBS

Featured Product



Basic Information

Catalog Number:

82922-1-PBS

Size:

100ug, Concentration: 1mg/ml by Nanodrop;

Source:

Rabbit

Isotype:

IgG

Immunogen Catalog Number:

AG16320

GenBank Accession Number:

BC027175

GeneID (NCBI):

3109

UNIPROT ID:

P28068

Full Name:

major histocompatibility complex, class II, DM beta

Calculated MW:

263 aa, 29 kDa

Observed MW:

31 kDa

Purification Method:

Protein A purification

CloneNo.:

230123A3

Applications

Tested Applications:

WB, IHC, IF/ICC, Indirect ELISA

Species Specificity:

human

Background Information

Human major histocompatibility complex (MHC) antigens, also referred to as human leukocyte antigens (HLA), are encoded by genes located on the short arm of chromosome 6 (6p21.3). There are two classes of HLA antigens: class I (HLA-A, B and C) and class II (HLA-D). The class II molecules are composed of two non-covalently associated alpha and beta chains. HLA-DMA and HLA-DMB form a functional heterodimer that is critical in the pathway of class II antigen presentation. HLA-DM plays a critical role in catalyzing the release of Class II HLA-associated invariant chain-derived peptides (CLIP) from newly synthesized class II HLA molecules and freeing the peptide binding site for acquisition of antigenic peptides.

Storage

Storage:

Store at -80°C.

Storage Buffer:

PBS Only

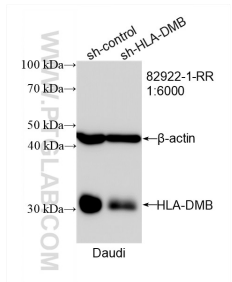
For technical support and original validation data for this product please contact:

T: 1 (888) 4PTGLAB (1-888-478-4522) (toll free in USA), or 1(312) 455-8498 (outside USA)

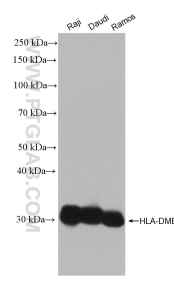
E: proteintech@ptglab.com
W: ptglab.com

This product is exclusively available under Proteintech Group brand and is not available to purchase from any other manufacturer.

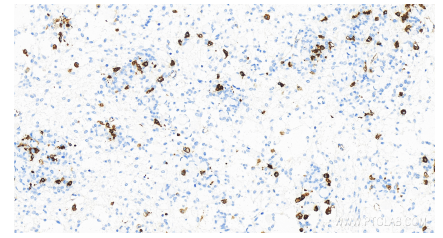
Selected Validation Data



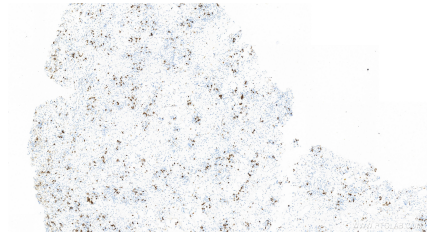
WB result of HLA-DMB antibody (82922-1-RR; 1:6000; incubated at room temperature for 1.5 hours) with sh-Control and sh-HLA-DMB transfected Daudi cells. This data was developed using the same antibody clone with 82922-1-PBS in a different storage buffer formulation.



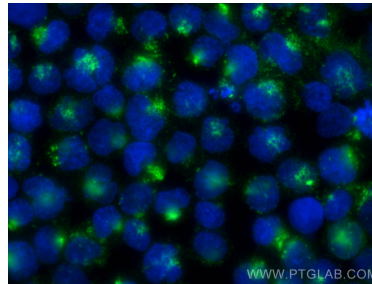
Various lysates were subjected to SDS PAGE followed by western blot with 82922-1-RR (HLA-DMB antibody) at dilution of 1:5000 incubated at room temperature for 1.5 hours. This data was developed using the same antibody clone with 82922-1-PBS in a different storage buffer formulation.



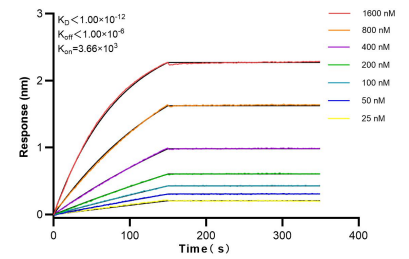
Immunohistochemical analysis of paraffin-embedded human ovary cancer tissue slide using 82922-1-RR (HLA-DMB antibody) at dilution of 1:600 (under 40x lens). Heat mediated antigen retrieval with Tris-EDTA buffer (pH 9.0). This data was developed using the same antibody clone with 82922-1-PBS in a different storage buffer formulation.



Immunohistochemical analysis of paraffin-embedded human ovary cancer tissue slide using 82922-1-RR (HLA-DMB antibody) at dilution of 1:600 (under 10x lens). Heat mediated antigen retrieval with Tris-EDTA buffer (pH 9.0). This data was developed using the same antibody clone with 82922-1-PBS in a different storage buffer formulation.



Immunofluorescent analysis of (4% PFA) fixed Raji cells using HLA-DMB antibody (82922-1-RR, Clone: 230123A3) at dilution of 1:400 and Coralite@488-Conjugated AffiniPure Goat Anti-Rabbit IgG(H+L). This data was developed using the same antibody clone with 82922-1-PBS in a different storage buffer formulation.



Biolayer interferometry (BLI) kinetic assays of 82922-1-RR against Human HLA-DMB were performed. The affinity constant is below 1 pM.