

For Research Use Only

PICK1 Recombinant antibody, PBS Only (Detector)

Catalog Number: 82919-1-PBS



Basic Information

Catalog Number: 82919-1-PBS	GenBank Accession Number: BC017561	Purification Method: Protein A purification
Size: 100ug, Concentration: 1mg/ml by Nanodrop;	GeneID (NCBI): 9463	CloneNo.: 230185B8
Source: Rabbit	UNIPROT ID: Q9NRD5	
Isotype: IgG	Full Name: protein interacting with PRKCA 1	
Immunogen Catalog Number: AG1443	Calculated MW: 47 kDa	
	Observed MW: 50 kDa	

Applications

Tested Applications:
WB, IHC, FC (Intra), Cytometric bead array, Sandwich ELISA, Indirect ELISA, Sample test

Species Specificity:
human, mouse, rat, pig

Product Information

82919-1-PBS targets PICK1 as part of a matched antibody pair:

MP00068-2: 82919-3-PBS capture and 82919-1-PBS detection (validated in Cytometric bead array)

MP00068-3: 82919-2-PBS capture and 82919-1-PBS detection (validated in Sandwich ELISA)

Unconjugated rabbit recombinant monoclonal antibody in PBS only (BSA and azide free) storage buffer at a concentration of 1 mg/mL, ready for conjugation. Created using Proteintech's proprietary in-house recombinant technology. Recombinant production enables unrivalled batch-to-batch consistency, easy scale-up, and future security of supply.

This conjugation ready format makes antibodies ideal for use in many applications including: ELISAs, multiplex assays requiring matched pairs, mass cytometry, and multiplex imaging applications. Antibody use should be optimized by the end user for each application and assay.

Background Information

Protein interacting with C kinase 1 (PICK1) was first cloned as a PKC-binding partner through yeast two hybrid system. PICK1 acts as a critical regulator of membrane receptors' subcellular trafficking to modulate neural processes such as learning and memory, and is widely expressed in brain, testis, heart, lung, liver, kidney and muscle. It probably binds to and organize the subcellular localization of a variety of membrane proteins containing some PDZ recognition sequence, for instance, PICK1 is a critical mediator of α -amino-3-hydroxy-5-methyl-4-isoxazolepropionic acid receptor (AMPA) trafficking in neural synapses. PICK1 expression on D-serine release and glutamate transport in astrocytes suggests a potential implication of PICK1 in the progression of amyotrophic lateral sclerosis (ALS). PICK1 may also participate in breast cancer development through inhibition of TGF- β signaling.

Storage

Storage:
Store at -80°C.
Storage Buffer:
100% PBS pH 7.3

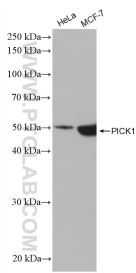
For technical support and original validation data for this product please contact:

T: 1 (888) 4PTGLAB (1-888-478-4522) (toll free in USA), or 1(312) 455-8498 (outside USA)

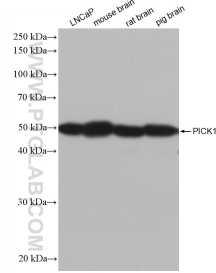
E: proteintech@ptglab.com
W: ptglab.com

This product is exclusively available under Proteintech Group brand and is not available to purchase from any other manufacturer.

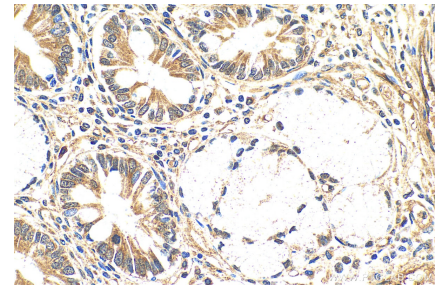
Selected Validation Data



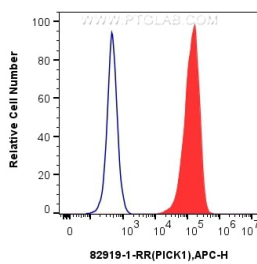
Various lysates were subjected to SDS PAGE followed by western blot with 82919-1-RR (PICK1 antibody) at dilution of 1:4000 incubated at room temperature for 1.5 hours. This data was developed using the same antibody clone with 82919-1-PBS in a different storage buffer formulation.



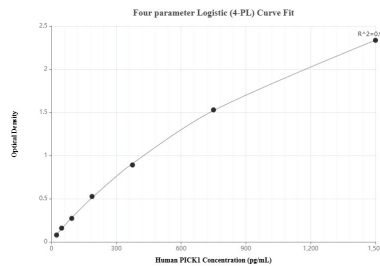
Various lysates were subjected to SDS PAGE followed by western blot with 82919-1-RR (PICK1 antibody) at dilution of 1:4000 incubated at room temperature for 1.5 hours. This data was developed using the same antibody clone with 82919-1-PBS in a different storage buffer formulation.



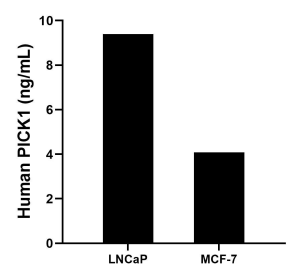
Immunohistochemical analysis of paraffin-embedded human stomach cancer tissue slide using 82919-1-RR (PICK1 antibody) at dilution of 1:800 (under 40x lens). Heat mediated antigen retrieval with Tris-EDTA buffer (pH 9.0). This data was developed using the same antibody clone with 82919-1-PBS in a different storage buffer formulation.



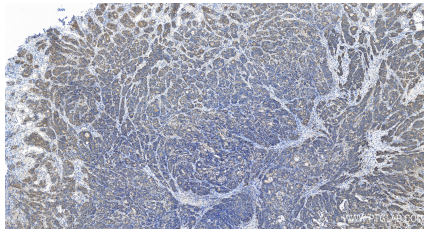
1x10⁶ HEK-293T cells were intracellularly stained with 0.25 ug Anti-Human PICK1 (82919-1-RR, Clone:230185B8) and APC-Conjugated AffiniPure Goat Anti-Rabbit IgG(H+L) at dilution 1:166 (red), or 0.25 ug Rabbit IgG control Rabbit PolyAb (30000-O-AP, Clone:). Cells were fixed with 4% PFA and permeabilized with Flow Cytometry Perm Buffer (PF00011-C). This data was developed using the same antibody clone with 82919-1-PBS in a different storage buffer formulation.



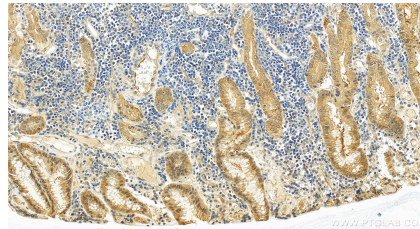
Sandwich ELISA standard curve of MP00068-3, Human PICK1 Recombinant Matched Antibody Pair - PBS only. 82919-2-PBS was coated to a plate as the capture antibody and incubated with serial dilutions of standard Ag1443. 82919-1-PBS was HRP conjugated as the detection antibody. Range: 23.4-1500 pg/mL



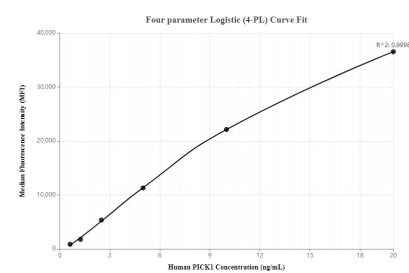
The mean PICK1 concentration was determined to be 9.40 ng/mL in LNCaP cell extract based on a 3.80 mg/mL extract load and 4.08 ng/mL in MCF-7 cell extract based on a 1.5 mg/mL extract load.



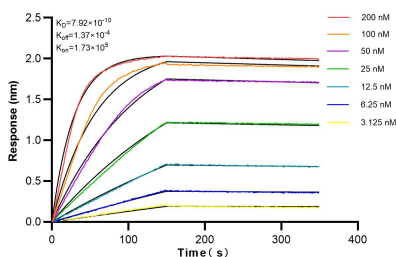
Immunohistochemical analysis of paraffin-embedded human stomach cancer tissue slide using 82919-1-RR (PICK1 antibody) at dilution of 1:800 (under 10x lens). Heat mediated antigen retrieval with Tris-EDTA buffer (pH 9.0). This data was developed using the same antibody clone with 82919-1-PBS in a different storage buffer formulation.



Immunohistochemical analysis of paraffin-embedded stomach cancer slide using 82919-1-RR (PICK1 antibody) at dilution of 1:800 (under 20x lens). Heat mediated antigen retrieval with Tris-EDTA buffer (pH 9.0). This data was developed using the same antibody clone with 82919-1-PBS in a different storage buffer formulation.



Cytometric bead array standard curve of MP00068-2, PICK1 Recombinant Matched Antibody Pair, PBS Only. Capture antibody: 82919-3-PBS. Detection antibody: 82919-1-PBS. Standard: Ag1443. Range: 0.625-20 ng/mL



Biolayer interferometry (BLI) kinetic assays of 82919-1-RR against Human PICK1 were performed. The affinity constant is 0.792 nM.